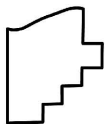
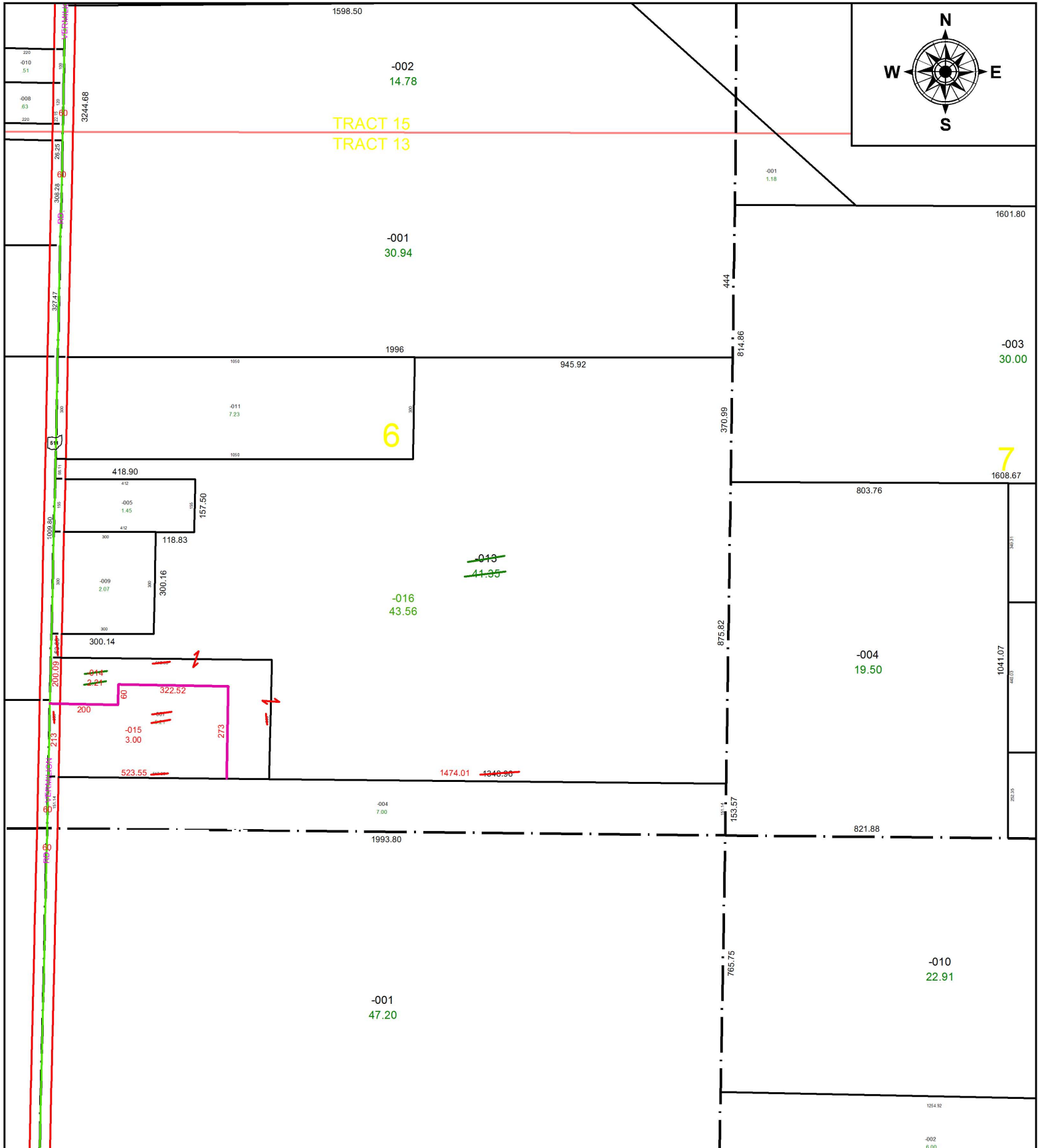


PARENT PARCEL: 08-13-006-000-007, -013, 08-13-007-000-004

CHILD PARCEL: 08-13-006-000-014 THRU -016, 08-13-007-000-004

STARTING POINT: SOUTHWEST CORNER OF O.L.6 TR.13

17-03671



SPLITS/DEEDS PROCESSED
 LORAIN COUNTY TAX MAP DEPARTMENT
 226 MIDDLE AVE. ELYRIA, OH

SURVEYED BY: THOMAS A. SIMON

CLOSURE: 1: 959,471

MAP PAGE(S): 8-G

APPROVED BY: RRM DATE: 5-17-17

SCALE: 1" = 375 PRIOR INSTRUMENT: 20160607025