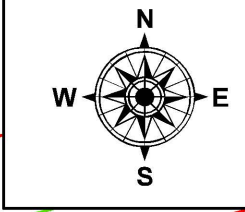
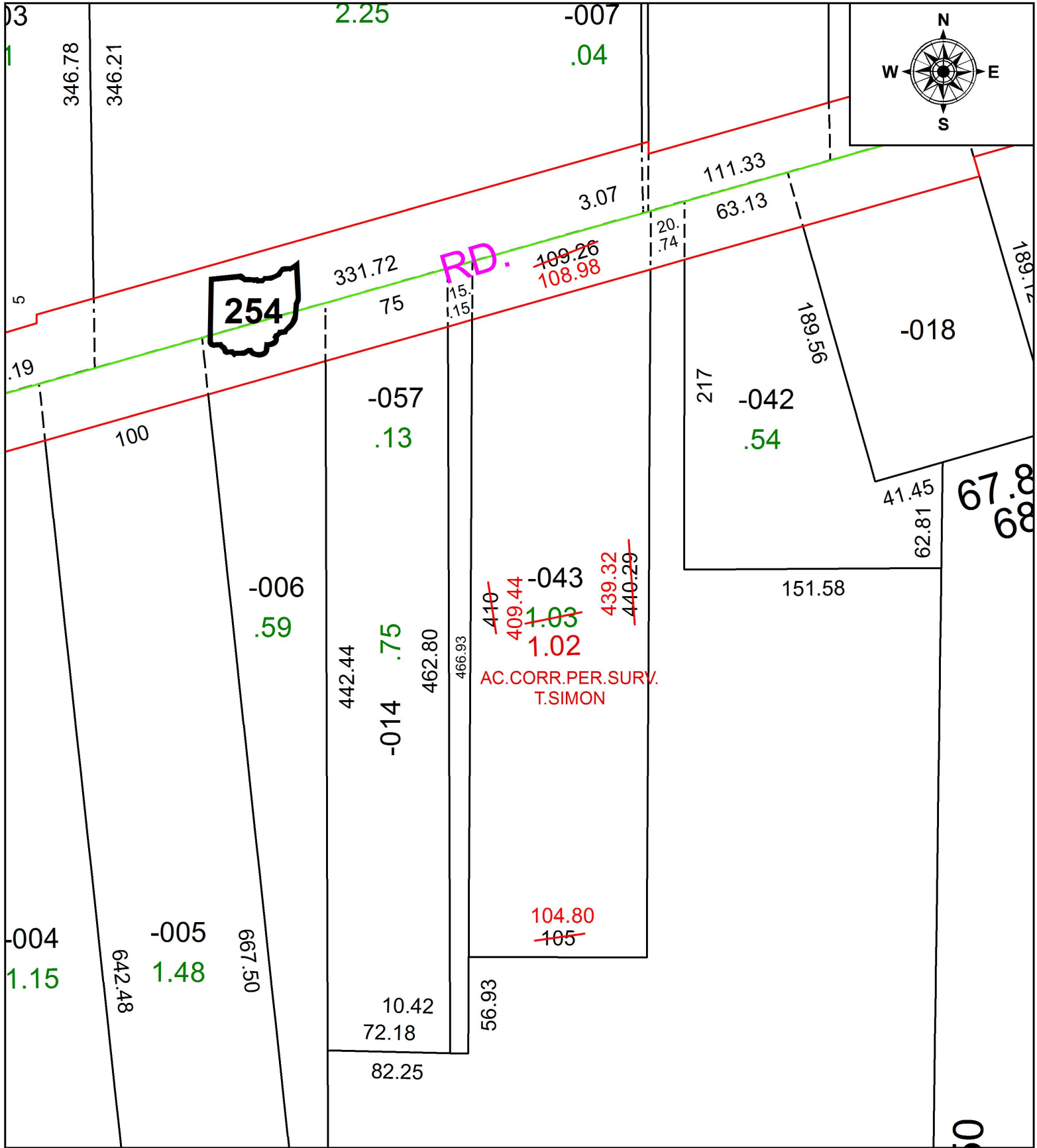


PARENT PARCEL: 03-00-074-104-043

CHILD PARCEL: XX-XX-XXX-XXX-XXX

STARTING POINT: INTERSECTION OF C/L OF S.R. 254 AND C/L OF GULF RD.

17-03671-D



SPLITS/DEEDS PROCESSED
 LORAIN COUNTY TAX MAP DEPARTMENT
 226 MIDDLE AVE. ELYRIA, OH

SURVEYED BY: THOMAS A. SIMON
 CLOSURE: 1: 270,173
 MAP PAGE(S): 3-00-074
 APPROVED BY: RRM DATE: 5-10-17
 SCALE: 1" = 75' PRIOR INSTRUMENT: 20120402184