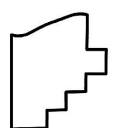
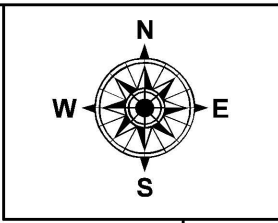
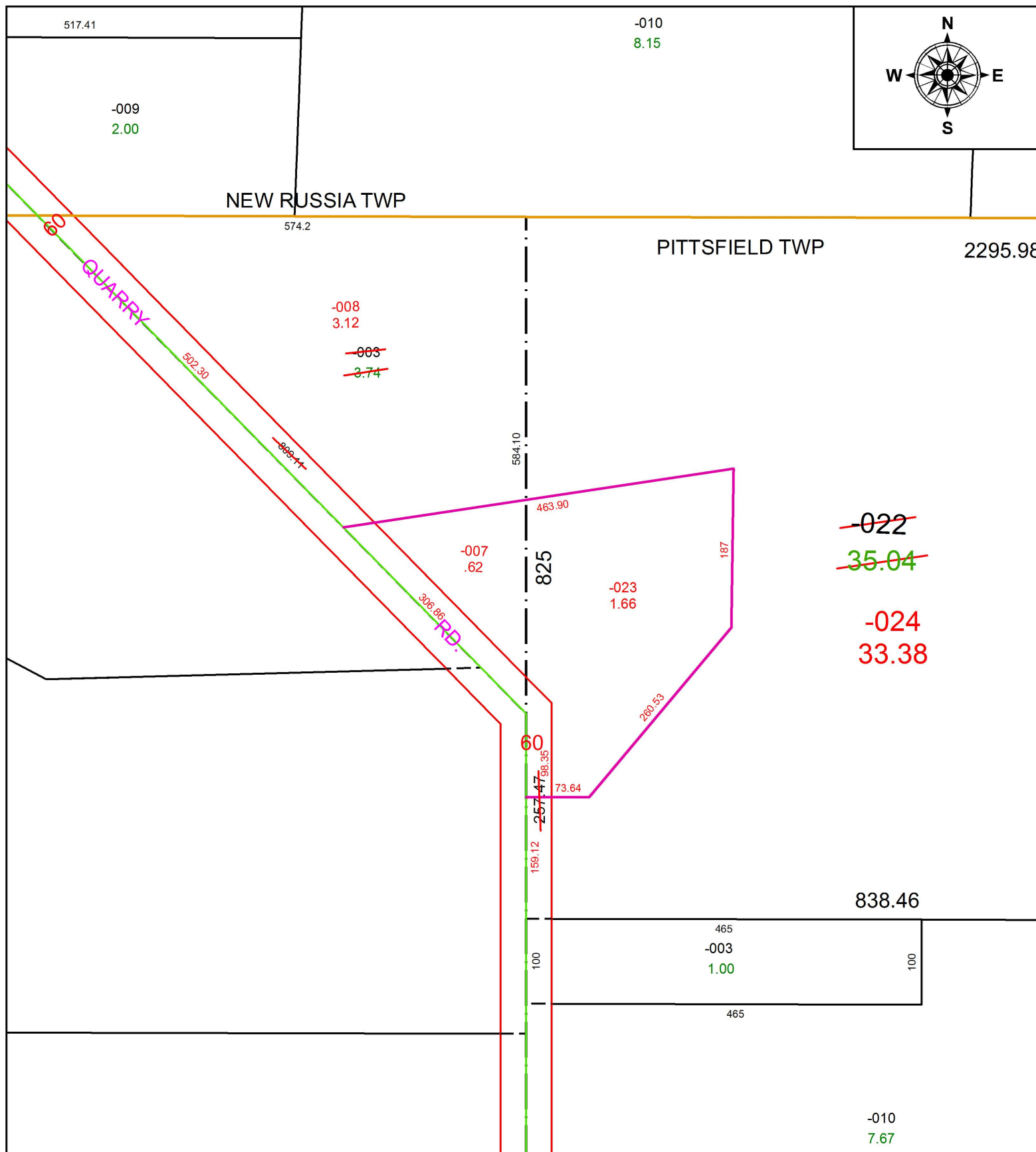


PARENT PARCEL: 14-00-009-000-022, 14-00-010-000-003

CHILD PARCEL: 14-00-009-000-023, -024, 14-00-010-000-007, -008

STARTING POINT: INTERSECTION OF C/L OF QUARRY RD. AND NORTH LINE OF PITTSFIELD TWP.

17-03670



SPLITS/DEEDS PROCESSED
 LORAIN COUNTY TAX MAP DEPARTMENT
 226 MIDDLE AVE. ELYRIA, OH

SURVEYED BY: RICHARD D. CARLSON
CLOSURE: 1: 139,557
MAP PAGE(S): 14-00-010
APPROVED BY: RRM **DATE:** 5-17-17
SCALE: 1" = 150 **PRIOR INSTRUMENT:** 20100345631