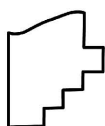
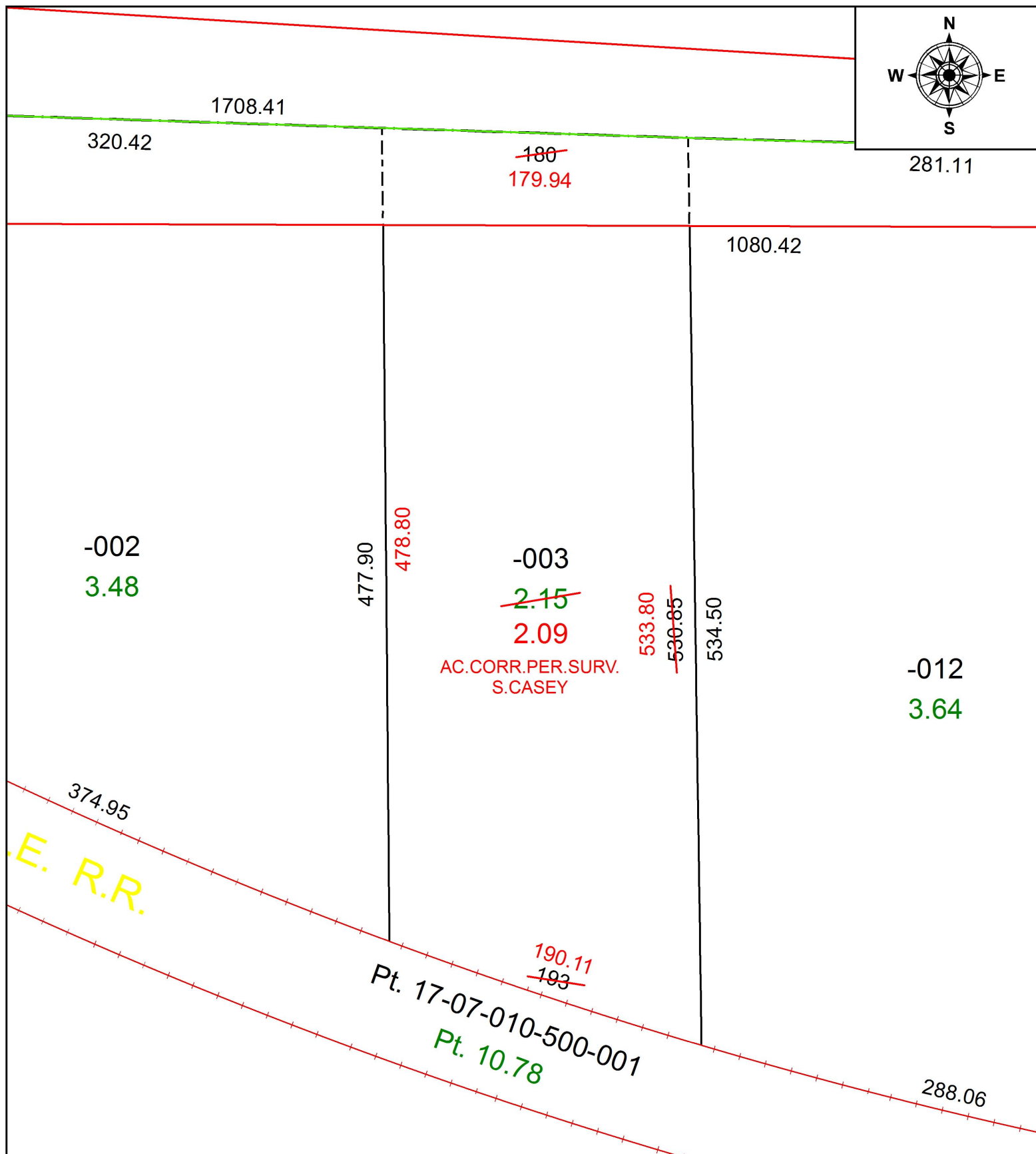
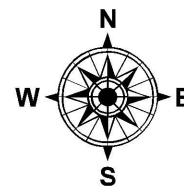


PARENT PARCEL: 17-07-011-000-003

CHILD PARCEL: XX-XX-XXX-XXX-XXX

STARTING POINT: INTERSECTION OF C/L OF S.R. 18 AND C/L OF QUARRY RD.

17-03670-D



SPLITS/DEEDS PROCESSED
 LORAIN COUNTY TAX MAP DEPARTMENT
 226 MIDDLE AVE. ELYRIA, OH

SURVEYED BY: SCOTT J. CASEY
 CLOSURE: 1: 308,390
 MAP PAGE(S): 17-H
 APPROVED BY: RRM DATE: 5-10-17
 SCALE: 1" = 75' PRIOR INSTRUMENT: 20130450505