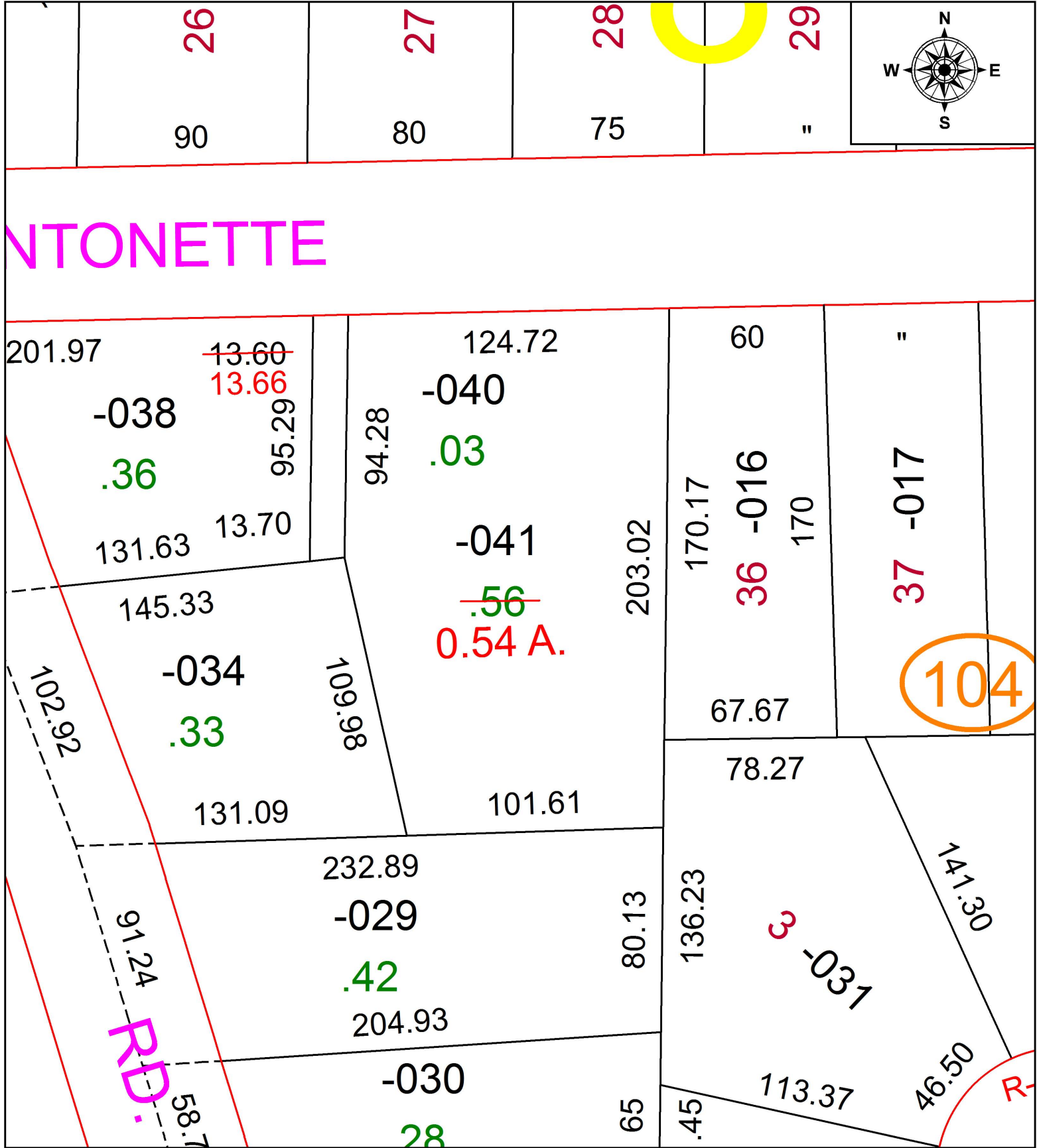


PARENT PARCEL: 06-22-008-104-041

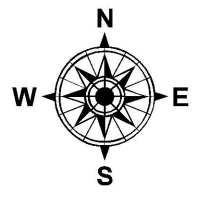
CHILD PARCEL: AC. CORR. PER DV 1264/189 & DV 1364/688

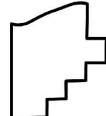
STARTING POINT: CL OF GULF RD. & SOUTH LINE OF ANTONETTE ST.

17-03669-C



ANTONETTE



 **SPLITS/DEEDS PROCESSED**
 LORAIN COUNTY TAX MAP DEPARTMENT
 226 MIDDLE AVE. ELYRIA, OH

SURVEYED BY: KS ASSOC.
 CLOSURE: 1: 33,000
 MAP PAGE(S): 06-22-008
 APPROVED BY: TJS DATE: 5/9/17
 SCALE: 1" = 50' PRIOR INSTRUMENT: DV XXXX/XXXX