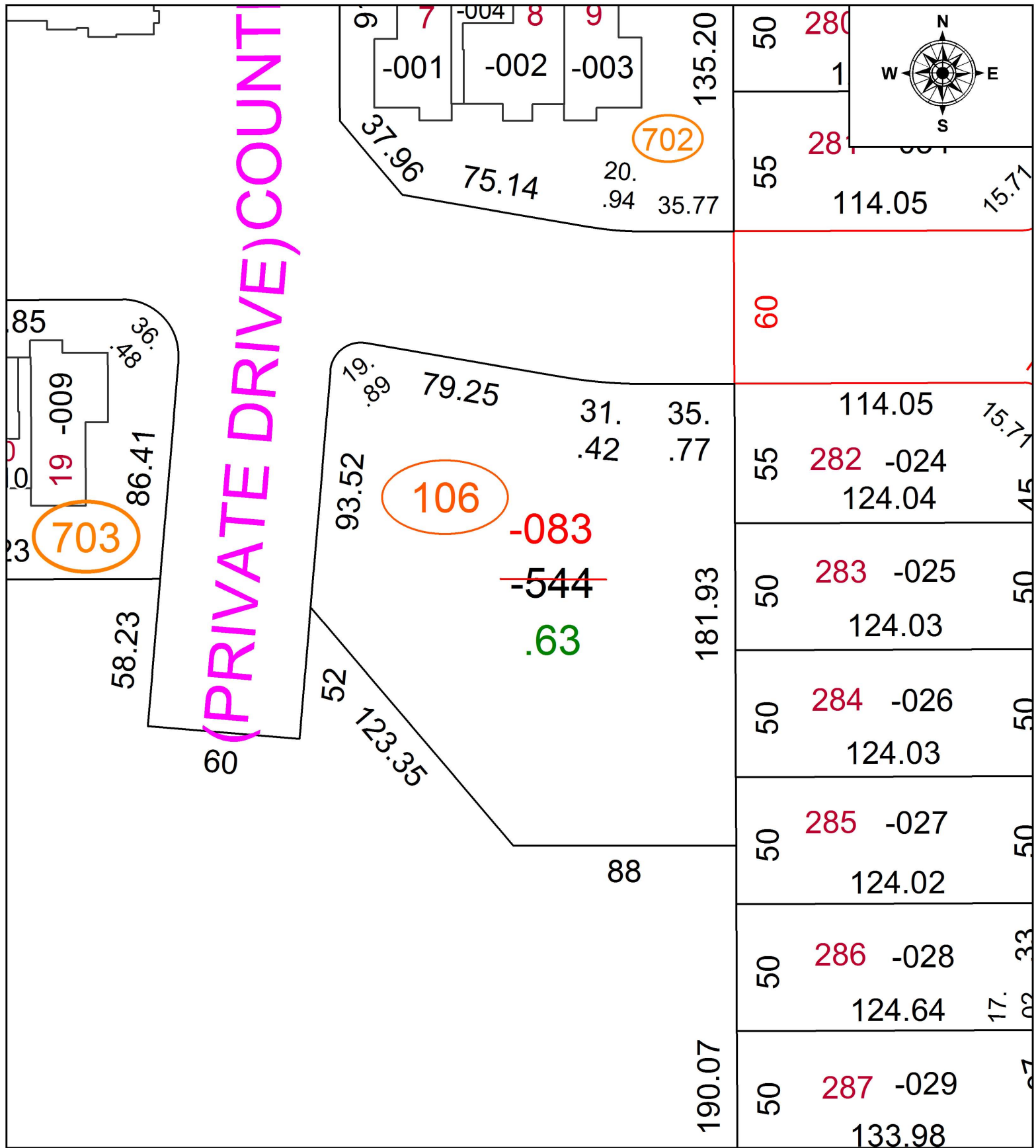


PARENT PARCEL: 04-00-003-101-544

CHILD PARCEL: RE-NUMBER 04-00-003-106-083

STARTING POINT: RE-NUMBER

17-03668-C



**SPLITS/DEEDS PROCESSED**  
 LORAIN COUNTY TAX MAP DEPARTMENT  
 226 MIDDLE AVE. ELYRIA, OH

SURVEYED BY: NA  
 CLOSURE: NA  
 MAP PAGE(S): 04-00-003  
 APPROVED BY: TJS DATE: 5/8/17  
 SCALE: 1" = 50' PRIOR INSTRUMENT: 2015-0570360