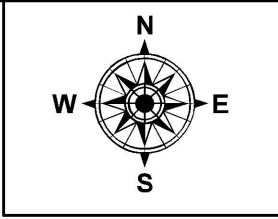
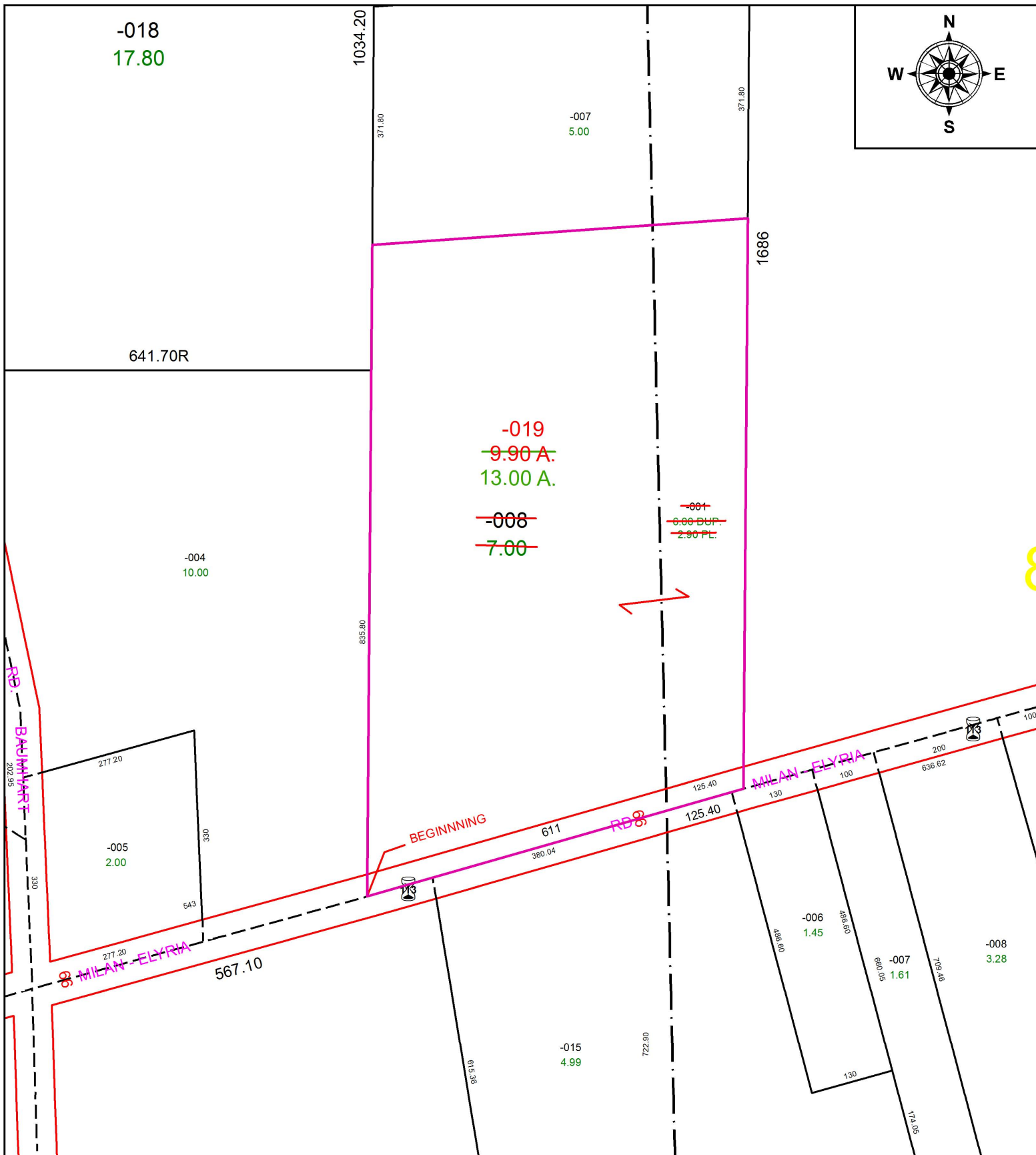


PARENT PARCEL: 08-00-087-000-008 & 08-00-088-000-001

CHILD PARCEL: 08-00-087-000-019 COMB. & AC CORR. PER DV 909/594

STARTING POINT: CL OF MILAN-ELYRIA RD. (S.R. 113) & S.E. CORNER OF LAND CONVEYED TO FRANK HEUSSNER

17-03665-C



**SPLITS/DEEDS PROCESSED**  
 LORAIN COUNTY TAX MAP DEPARTMENT  
 226 MIDDLE AVE. ELYRIA, OH

SURVEYED BY: NA  
 CLOSURE: NA  
 MAP PAGE(S): 12-00-033  
 APPROVED BY: TJS DATE: 5/5/17  
 SCALE: 1" = 200 PRIOR INSTRUMENT: DV 909/594