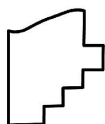
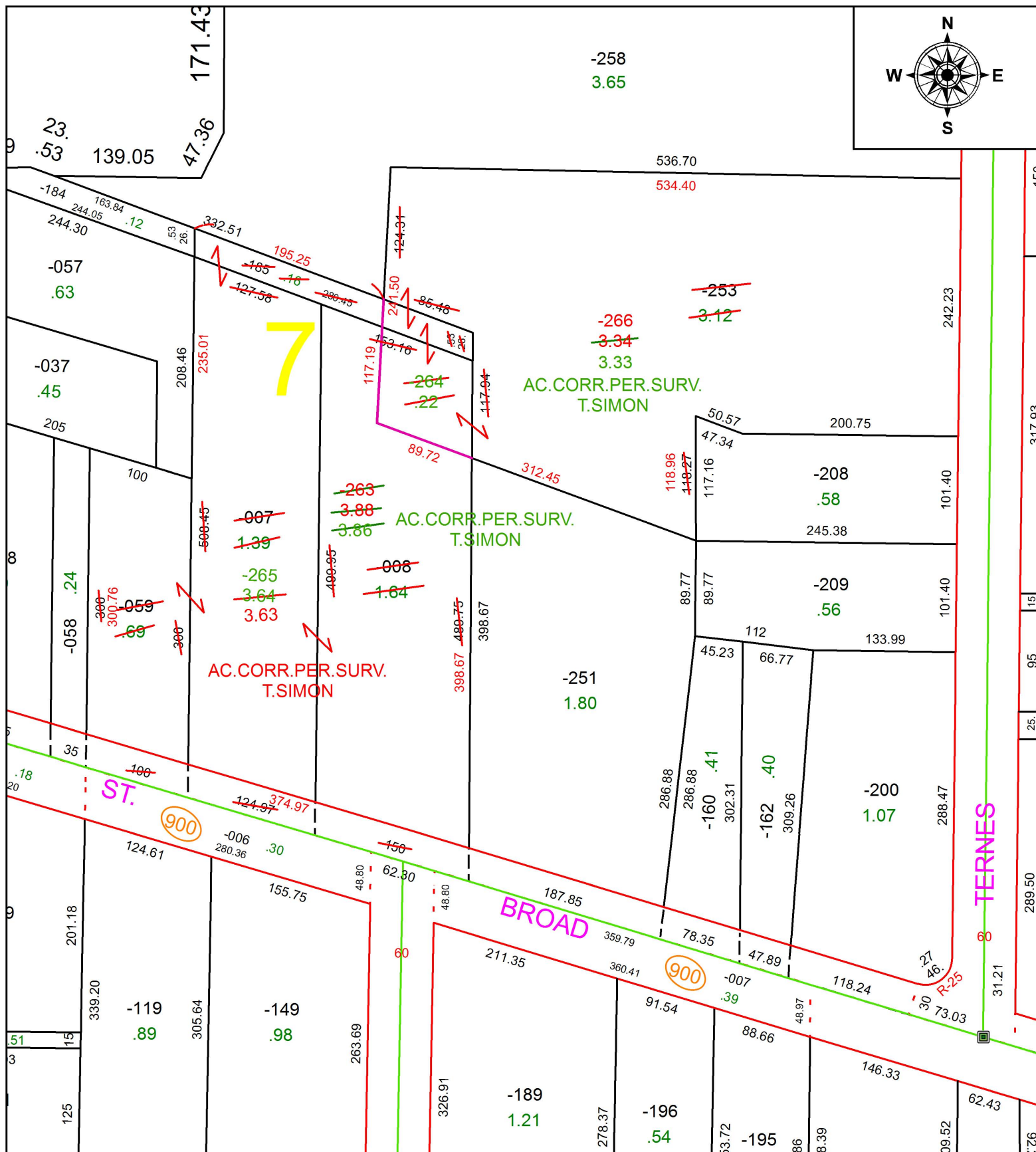


PARENT PARCEL: 06-25-007-000-007, -008, -059, -185, -253

CHILD PARCEL: 06-25-007-000-263 THRU -266

STARTING POINT: INTERSECTION OF C/L OF EAST BROAD ST. AND C/L OF TERNES AVE.

17-03663



SPLITS/DEEDS PROCESSED
LORAIN COUNTY TAX MAP DEPARTMENT
226 MIDDLE AVE. ELYRIA, OH

SURVEYED BY: THOMAS A. SIMON
CLOSURE: 1: 368,404
MAP PAGE(S): 6-126
APPROVED BY: RRM DATE: 4-28-17
SCALE: 1" = 120 PRIOR INSTRUMENT: 20170623176