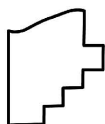
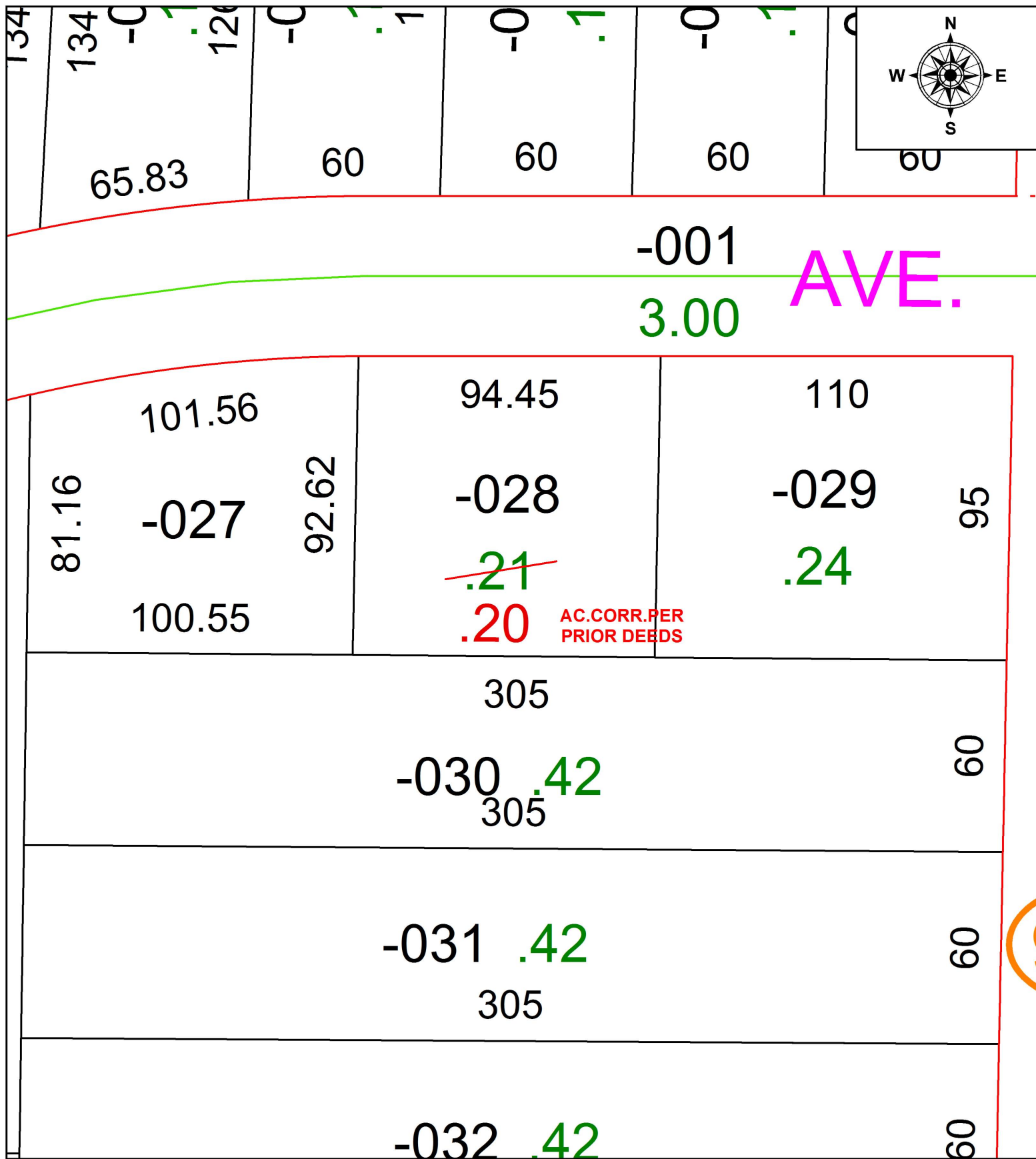


PARENT PARCEL: 05-00-023-103-028

CHILD PARCEL: XX-XX-XXX-XXX-XXX

STARTING POINT: N/A

17-03663-A



**SPLITS/DEEDS PROCESSED**  
LORAIN COUNTY TAX MAP DEPARTMENT  
226 MIDDLE AVE. ELYRIA, OH

SURVEYED BY:	N/A
CLOSURE:	N/A
MAP PAGE(S):	5-00-023
APPROVED BY:	RRM DATE: 5-1-17
SCALE:	1" = 40' PRIOR INSTRUMENT: 20170627528