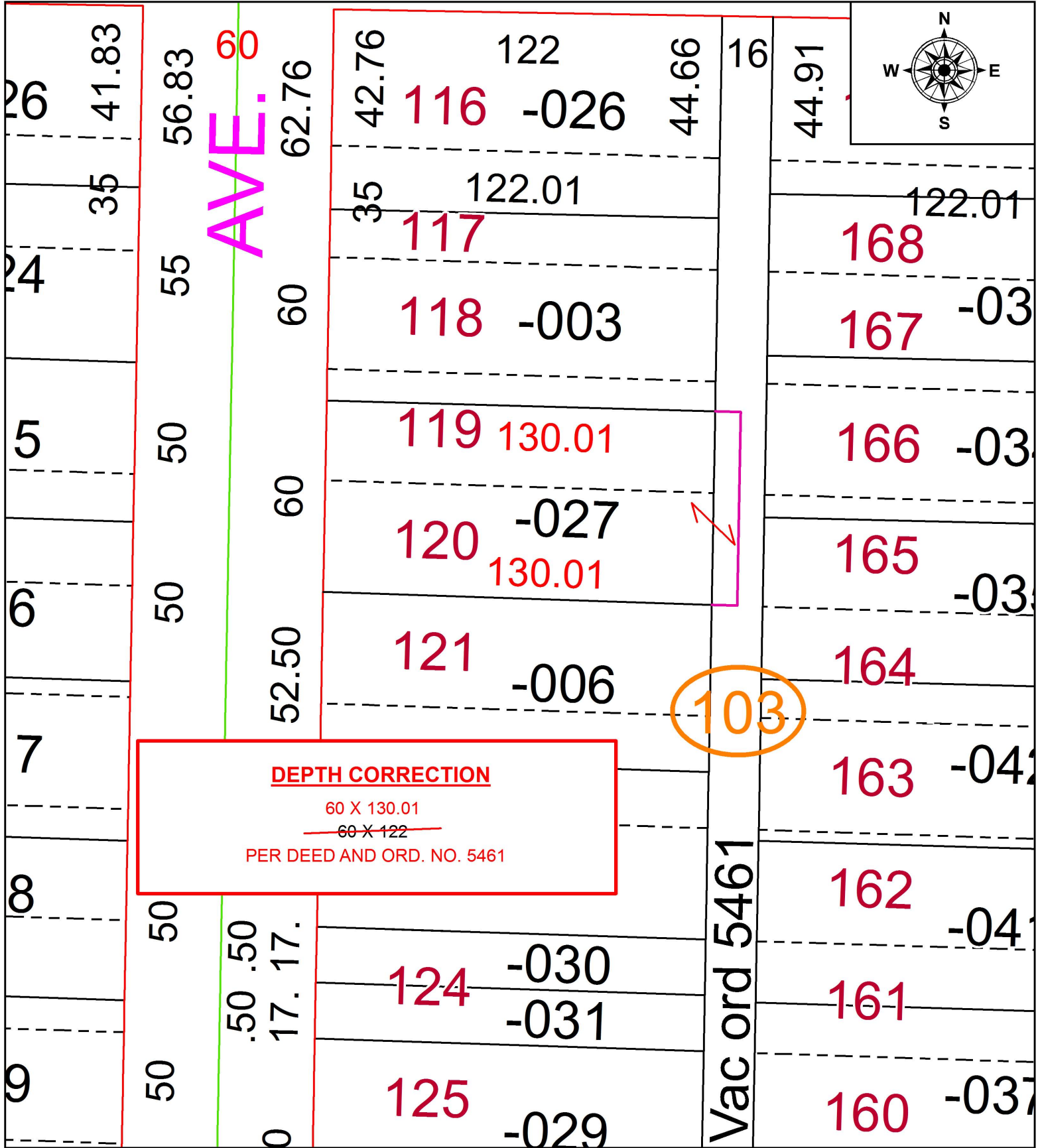


PARENT PARCEL: 03-00-056-103-027

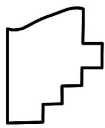
CHILD PARCEL: XX-XX-XXX-XXX-XXX

STARTING POINT: S/L 120 AND THE SOUTHERLY 25 FT OF S/L 119 IN LARKMOOR SUB.

17-03659-C



DEPTH CORRECTION
 60 X 130.01
~~60 X 122~~
 PER DEED AND ORD. NO. 5461



SPLITS/DEEDS PROCESSED
 LORAIN COUNTY TAX MAP DEPARTMENT
 226 MIDDLE AVE. ELYRIA, OH

SURVEYED BY: N/A
 CLOSURE: N/A
 MAP PAGE(S): 3-00-056
 APPROVED BY: RRM DATE: 4-26-17
 SCALE: 1" = 40' PRIOR INSTRUMENT: 20170626679