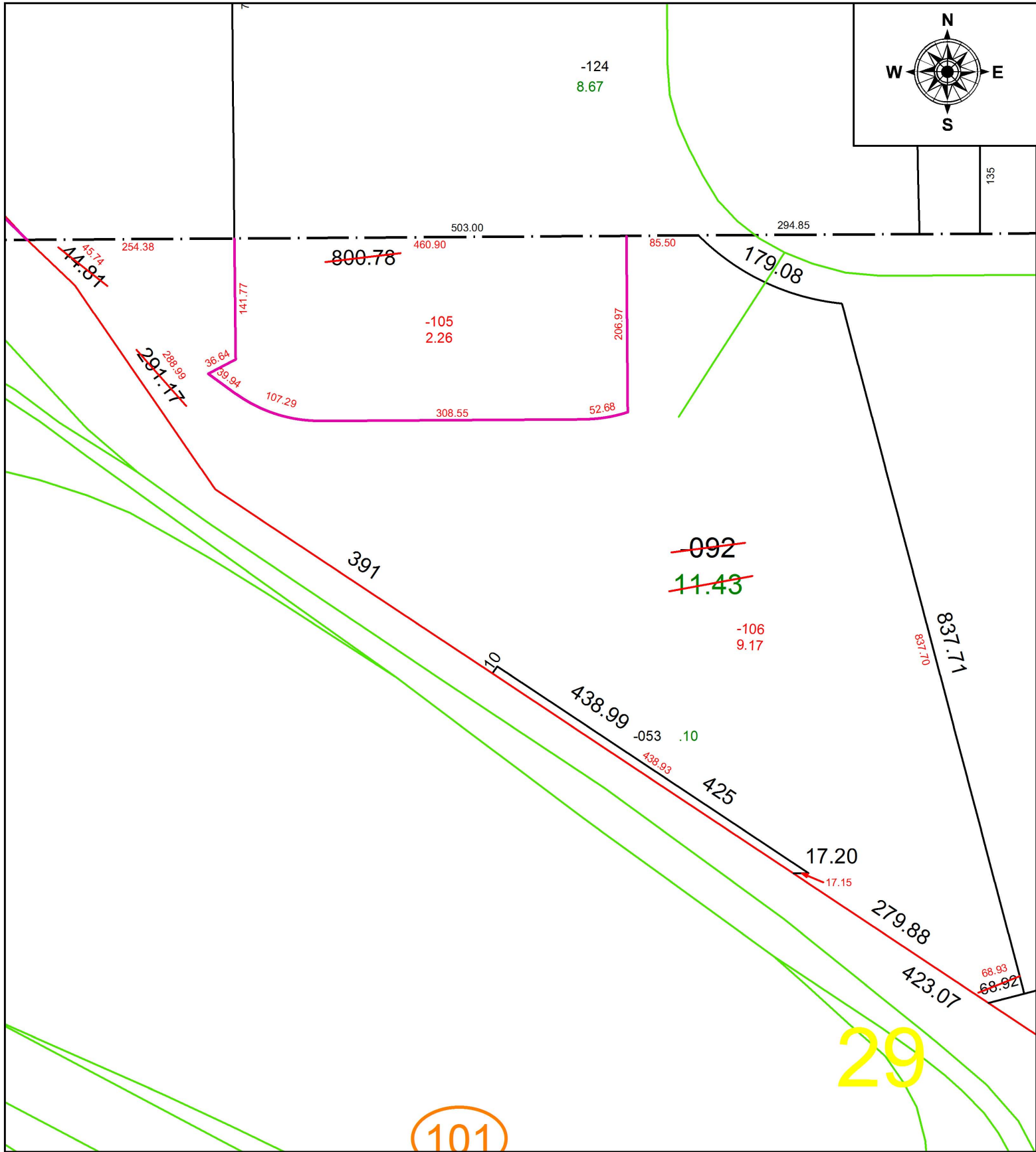
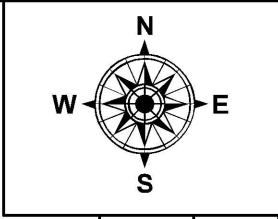


PARENT PARCEL: 06-24-029-101-092

CHILD PARCEL: 06-24-029-101-105, -106

STARTING POINT: INTERSECTION OF EAST LINE OF TURNPIKE AND NORTH LINE OF O.L.29

17-03658



SPLITS/DEEDS PROCESSED
LORAIN COUNTY TAX MAP DEPARTMENT
226 MIDDLE AVE. ELYRIA, OH

SURVEYED BY: BRIAN P. MCCARTNEY
CLOSURE: 1: 320,090
MAP PAGE(S): 6-64
APPROVED BY: RRM DATE: 4-11-17
SCALE: 1" = 150 PRIOR INSTRUMENT: 20130445253