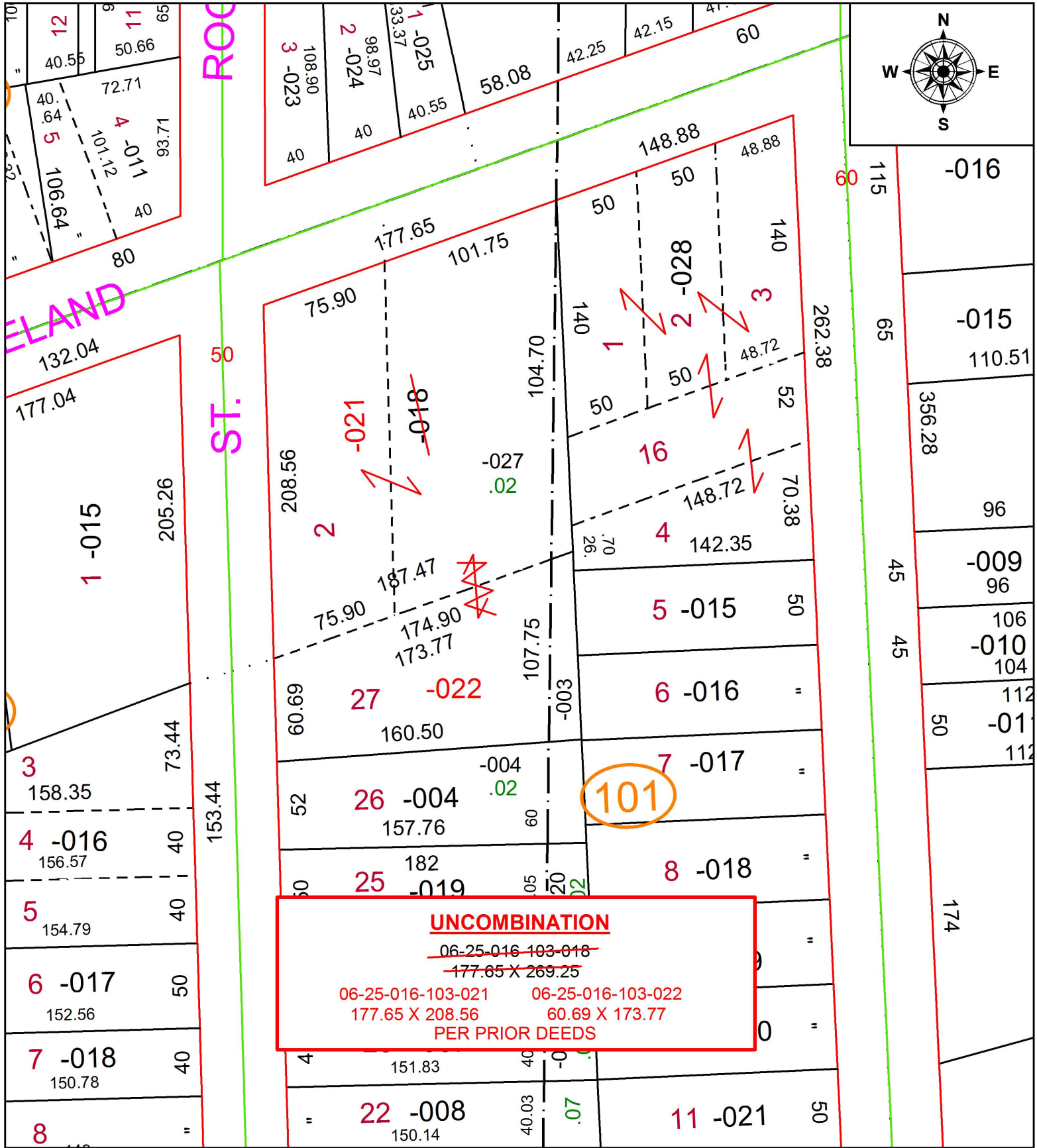


PARENT PARCEL: 06-25-016-103-018

CHILD PARCEL: 06-25-016-103-021, -022

STARTING POINT: INTERSECTION OF SOUTH LINE OF CLEVELAND ST. AND EAST LINE OF WINCKLES ST.

17-03657-U



SPLITS/DEEDS PROCESSED
 LORAIN COUNTY TAX MAP DEPARTMENT
 226 MIDDLE AVE. ELYRIA, OH

SURVEYED BY: _____ N/A
 CLOSURE: _____ N/A
 MAP PAGE(S): _____ 6-105
 APPROVED BY: _____ RRM DATE: _____ 4-19-17
 SCALE: _____ 1" = 75' PRIORITY INSTRUMENT: _____ 19970445371