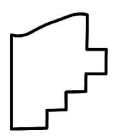
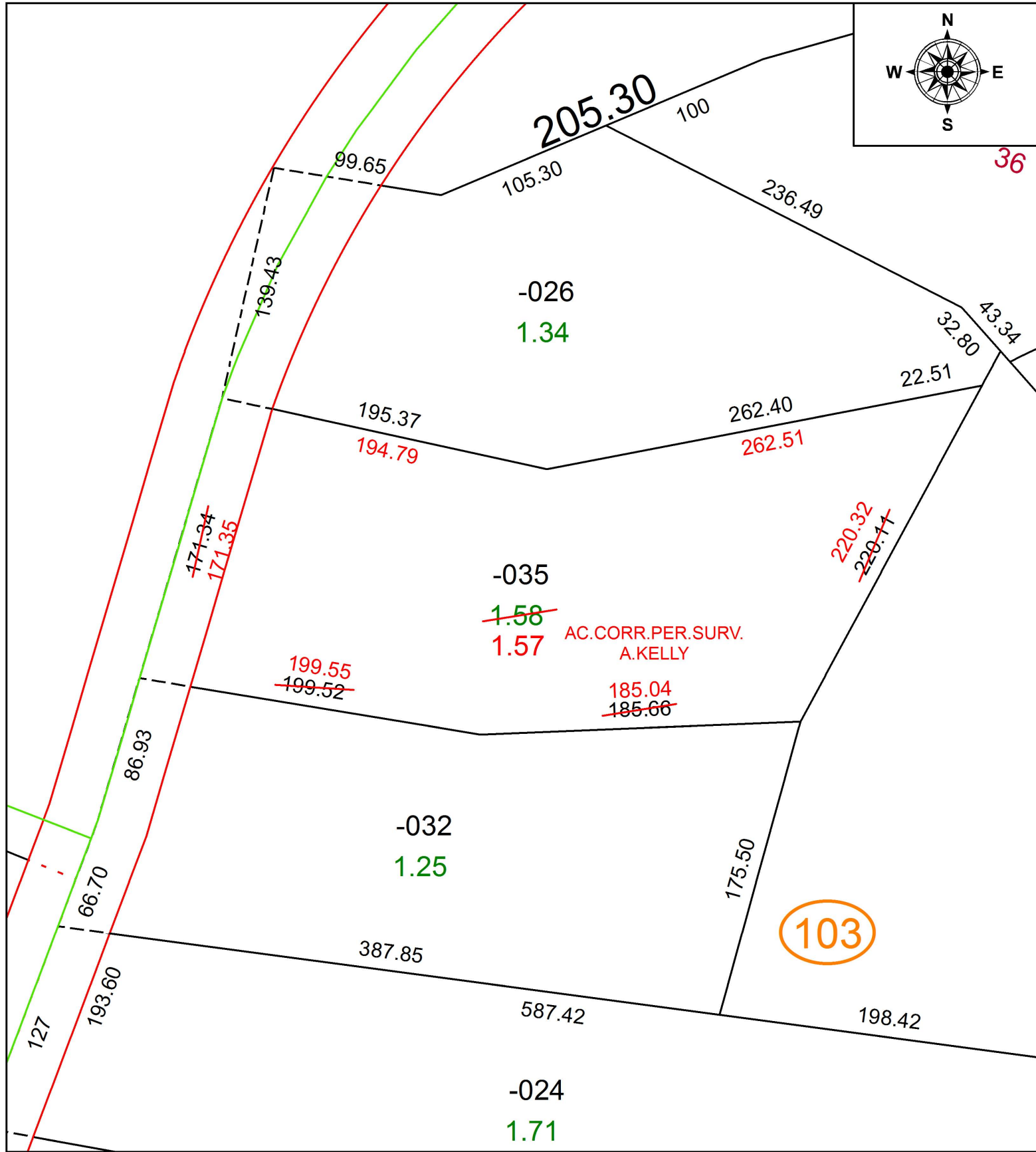
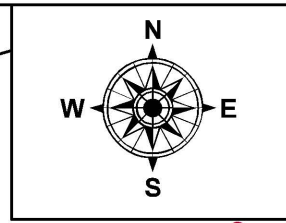


PARENT PARCEL: 06-23-024-103-035

CHILD PARCEL: XX-XX-XXX-XXX-XXX

STARTING POINT: INTERSECTION OF C/L OF GULF RD. AND NORTH LINE OF O.L.24

17-03654-D



**SPLITS/DEEDS PROCESSED**  
LORAIN COUNTY TAX MAP DEPARTMENT  
226 MIDDLE AVE. ELYRIA, OH

SURVEYED BY: AMY M. KELLY  
CLOSURE: 1: 115,101  
MAP PAGE(S): 6-33  
APPROVED BY: RRM DATE: 4-18-17  
SCALE: 1" = 75' PRIOR INSTRUMENT: 20130469745