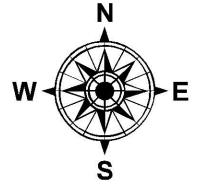
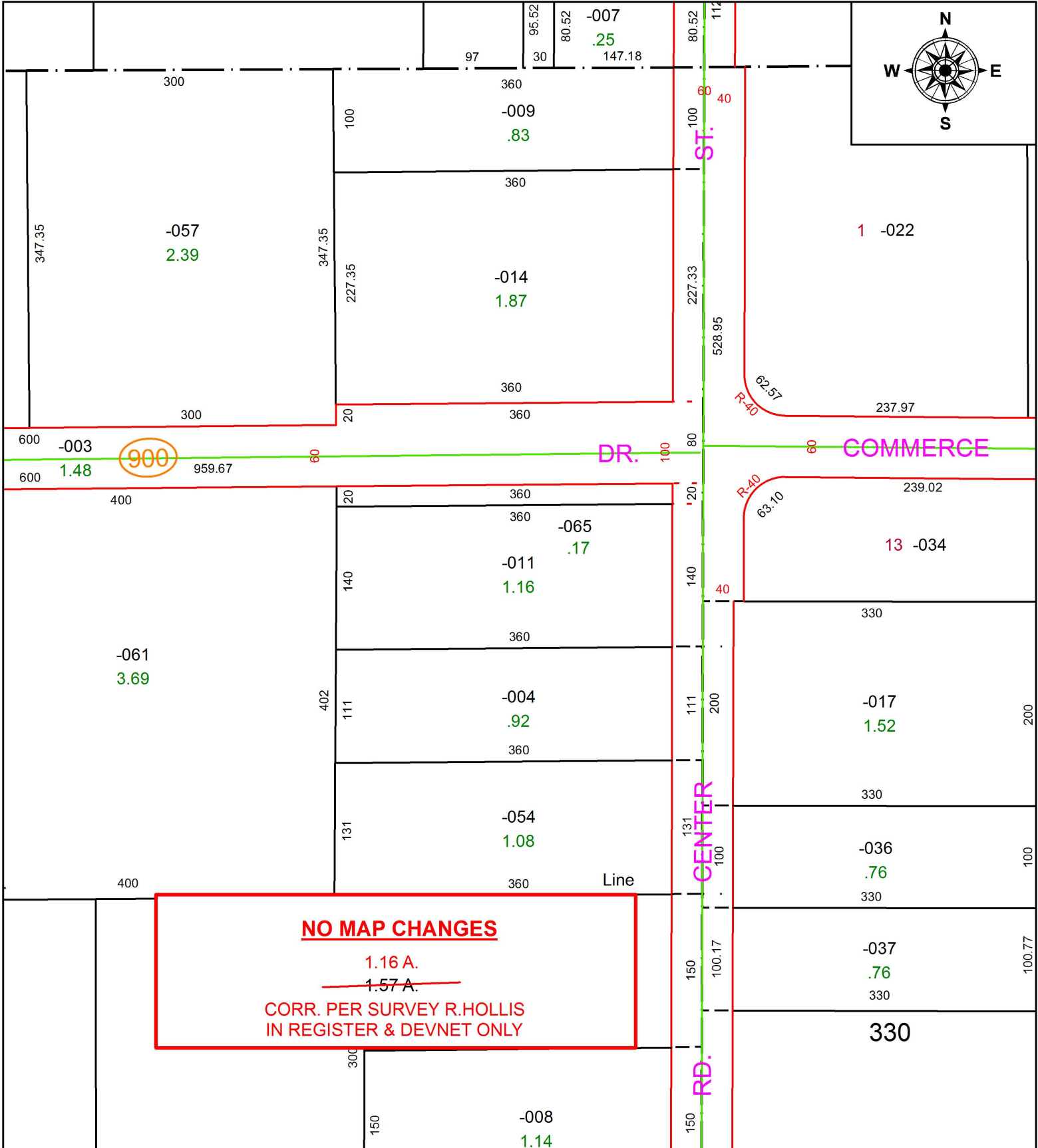


PARENT PARCEL: 15-00-065-000-011  
 CHILD PARCEL: XX-XX-XXX-XXX-XXX  
 STARTING POINT:

17-03653-A



**NO MAP CHANGES**  
 1.16 A.  
~~1.57 A.~~  
 CORR. PER SURVEY R.HOLLIS  
 IN REGISTER & DEVNET ONLY



**SPLITS/DEEDS PROCESSED**  
 LORAIN COUNTY TAX MAP DEPARTMENT  
 226 MIDDLE AVE. ELYRIA, OH

SURVEYED BY: RAY E. HOLLIS  
 CLOSURE: 1: 2147483648  
 MAP PAGE(S): 15-00-065  
 APPROVED BY: RRM DATE: 4-13-17  
 SCALE: 1" = 125 PRIOR INSTRUMENT: 20170624497