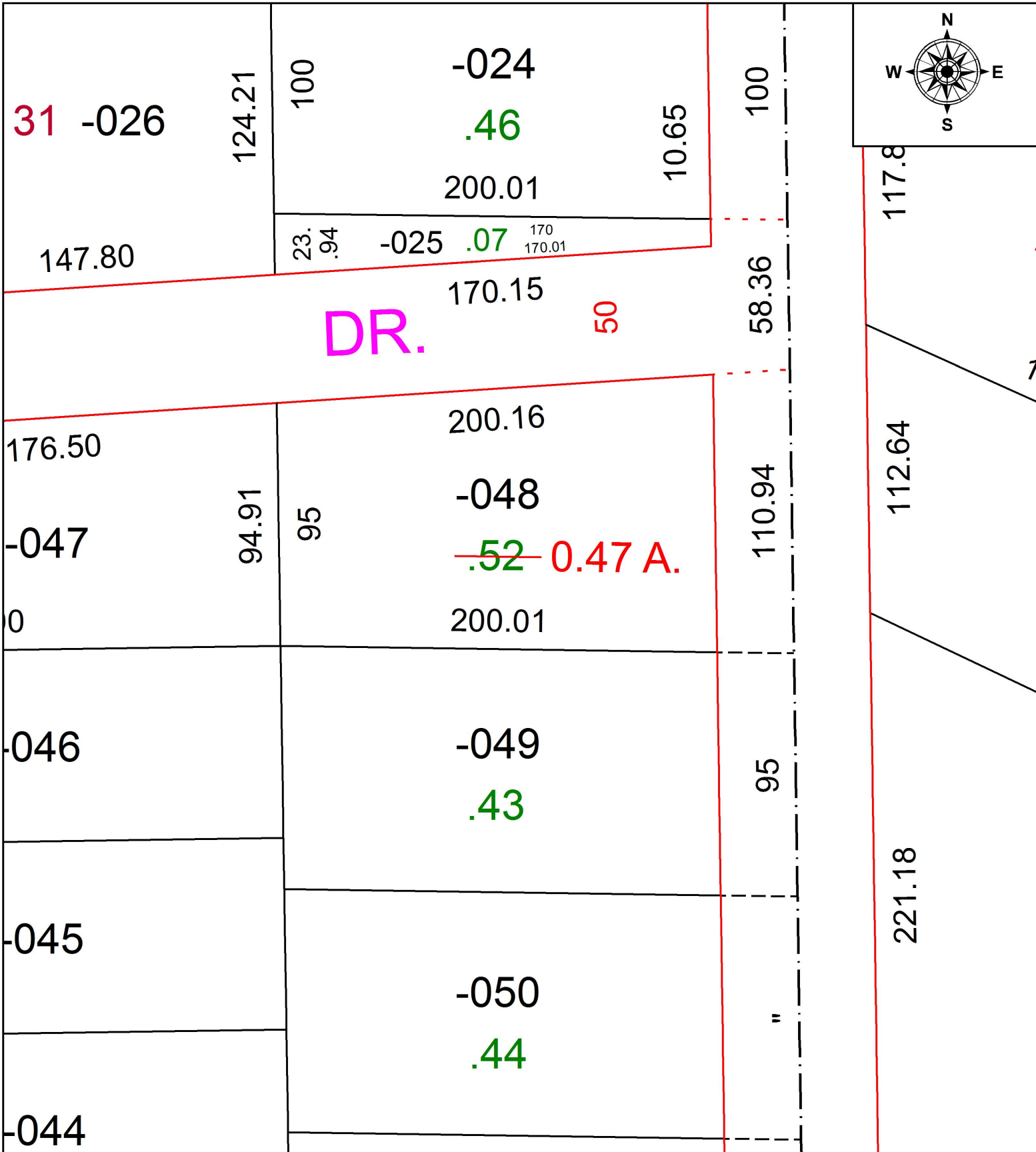


PARENT PARCEL: 01-00-004-129-048

CHILD PARCEL: AC. CORR. PER DEED

STARTING POINT: CL OF SUNNYSIDE RD. & SOUTH LINE OF O.L. 4

17-03652-C



**SPLITS/DEEDS PROCESSED**  
 LORAIN COUNTY TAX MAP DEPARTMENT  
 226 MIDDLE AVE. ELYRIA, OH

SURVEYED BY: NA  
 CLOSURE: 1:22747  
 MAP PAGE(S): 01-00-004  
 APPROVED BY: TJS DATE: 4/13/17  
 SCALE: 1" = 50' PRIOR INSTRUMENT: DV 1388/522