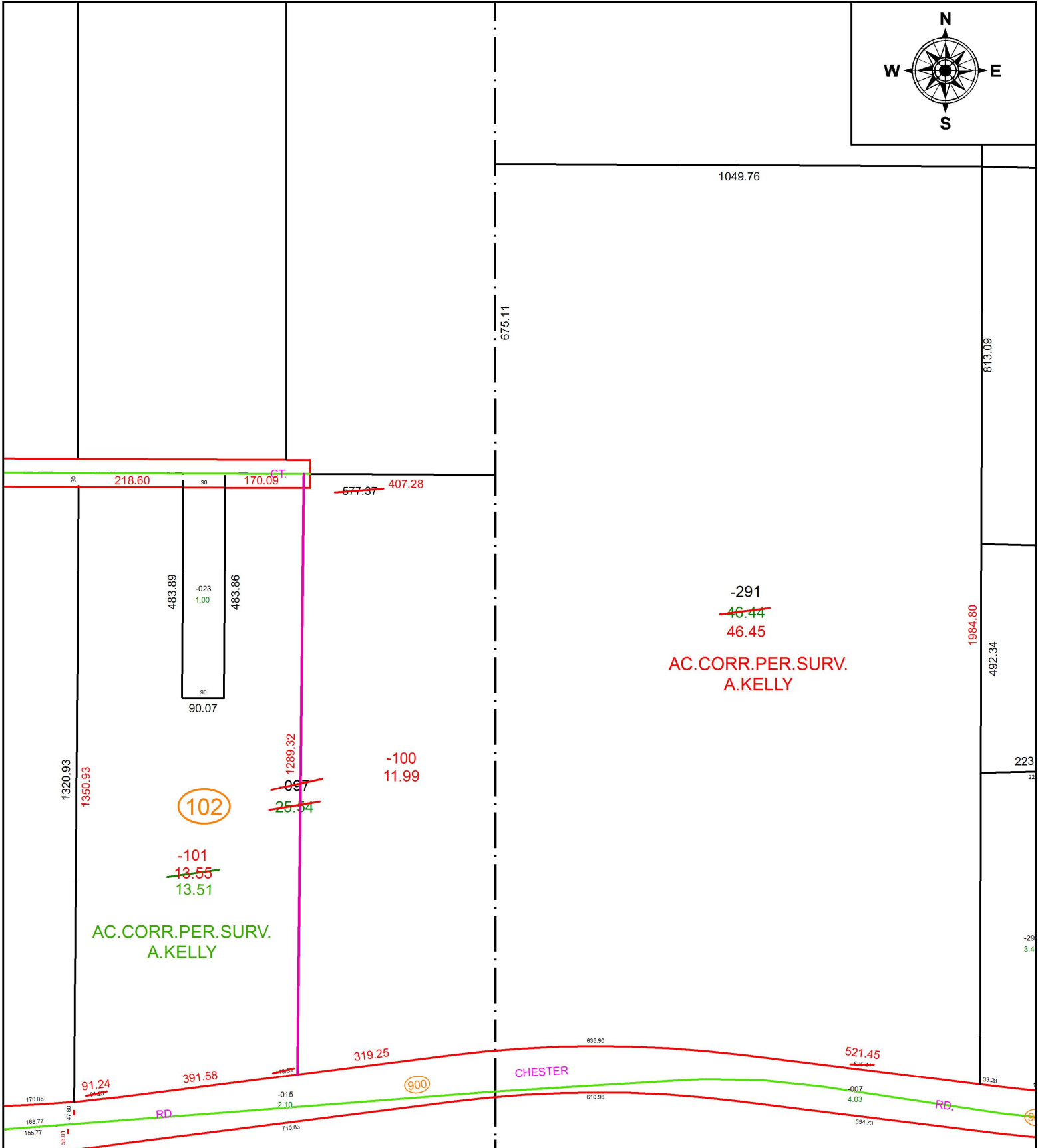


PARENT PARCEL: 04-00-016-102-097, 04-00-021-000-291

CHILD PARCEL: 04-00-016-102-100, -101, 04-00-021-000-291

STARTING POINT: INTERSECTION OF C/L OF S.R.83 AND C/L OF CHESTER RD.

17-03651



SPLITS/DEEDS PROCESSED
LORAIN COUNTY TAX MAP DEPARTMENT
226 MIDDLE AVE. ELYRIA, OH

SURVEYED BY: AMY M. KELLY
CLOSURE: 1: 443,386
MAP PAGE(S): 4-00-016
APPROVED BY: RRM DATE: 3-20-17
SCALE: 1" = 275 PRIOR INSTRUMENT: 20080263879