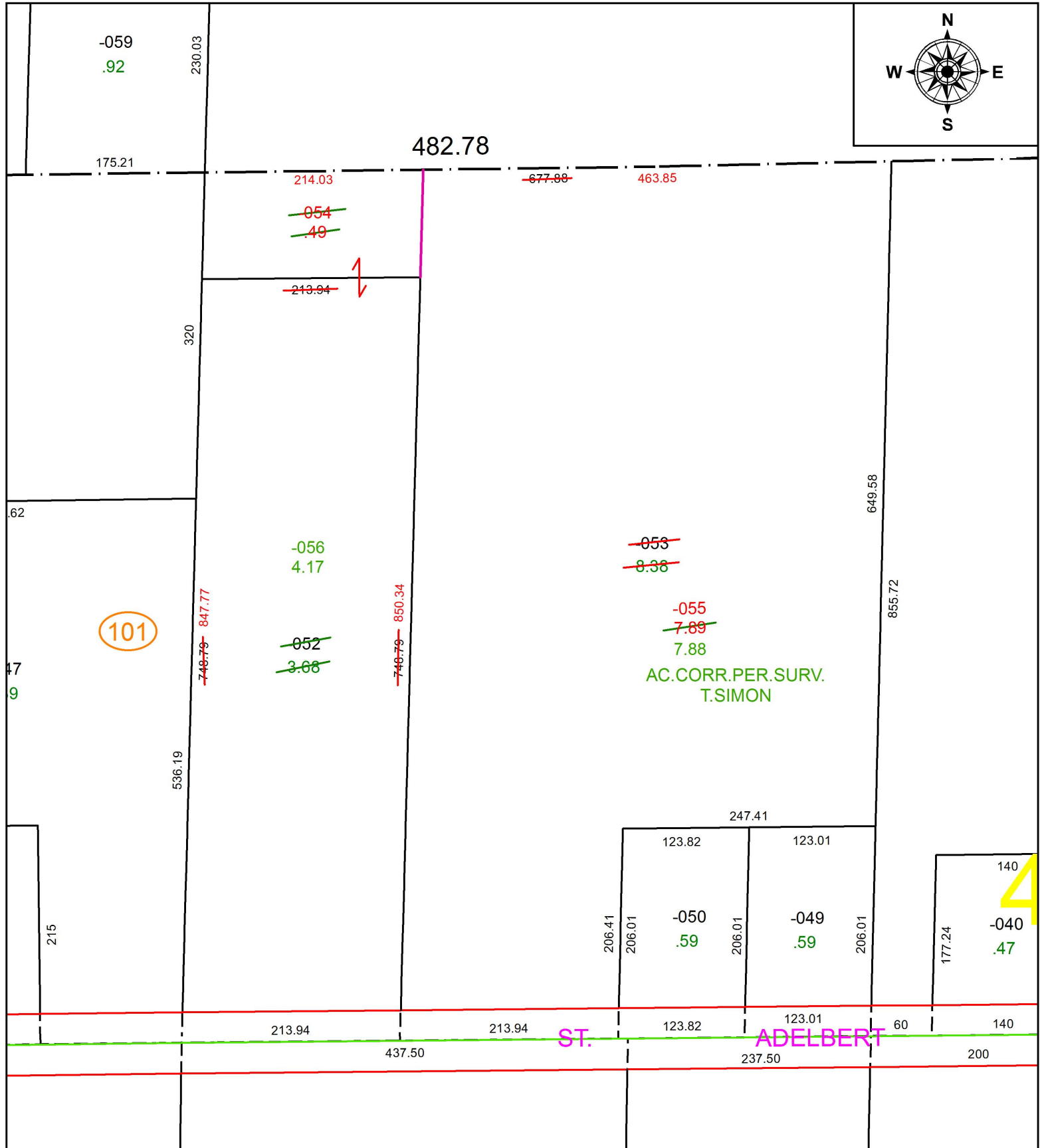


PARENT PARCEL: 06-24-040-101-052, -053

CHILD PARCEL: 06-24-040-101-054 THRU -056

17-03650

STARTING POINT: INTERSECTION OF C/L OF ADELBERT ST. AND WEST LINE OF ORCHARD GROVE ALLOT.



SPLITS/DEEDS PROCESSED
 LORAIN COUNTY TAX MAP DEPARTMENT
 226 MIDDLE AVE. ELYRIA, OH

SURVEYED BY: THOMAS A. SIMON
 CLOSURE: 1:126,440
 MAP PAGE(S): 6-40
 APPROVED BY: RRM DATE: 3-20-17
 SCALE: 1" = 125 PRIOR INSTRUMENT: 20150532751