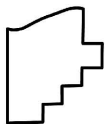
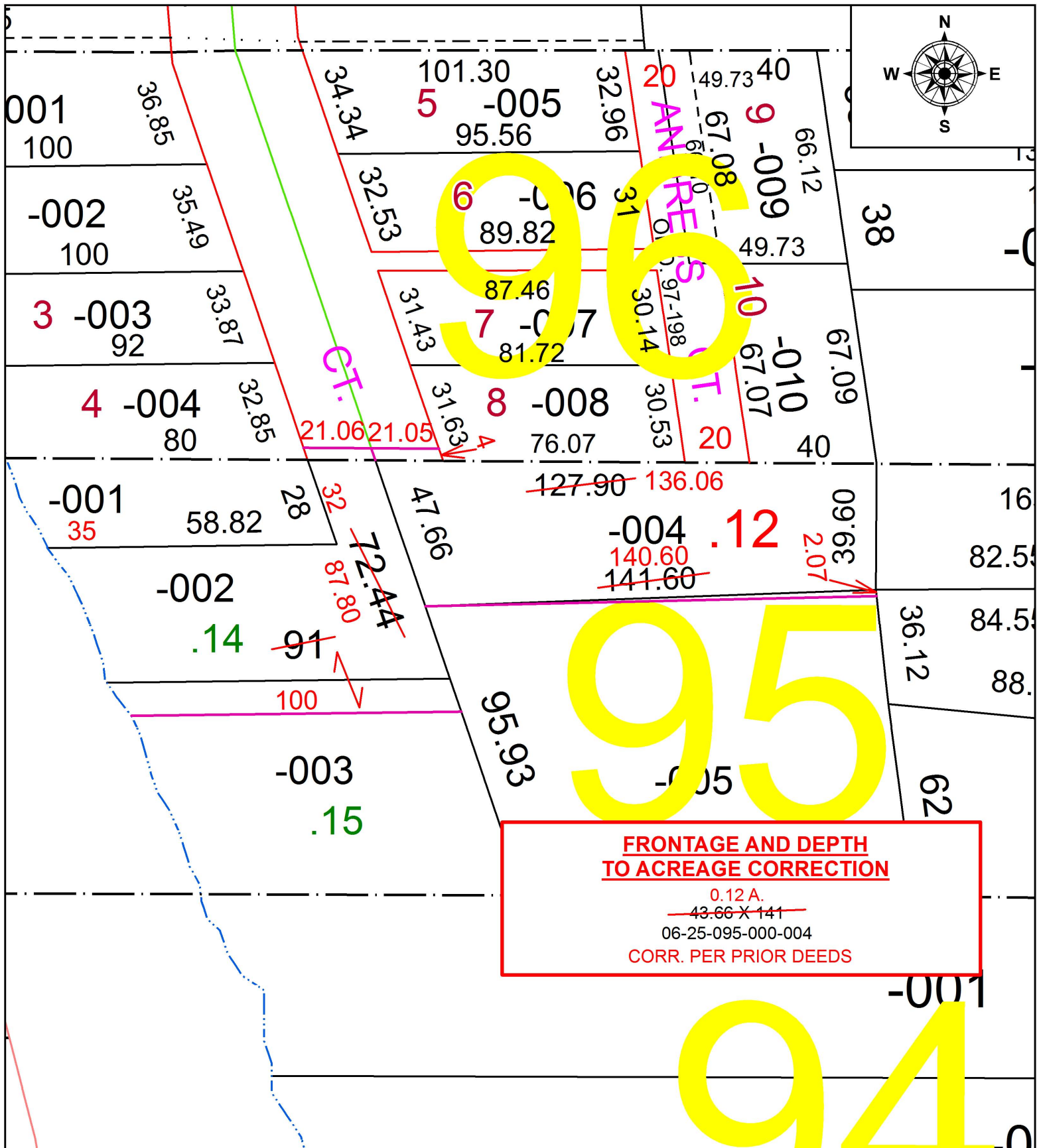


PARENT PARCEL: 06-25-095-000-002, -004

CHILD PARCEL: XX-XX-XXX-XXX-XXX

STARTING POINT: SOUTHWEST CORNER OF S/L 8 HM ADDRESS SUB. (VOL.6 PG. 26)

17-03648-C



SPLITS/DEEDS PROCESSED
LORAIN COUNTY TAX MAP DEPARTMENT
226 MIDDLE AVE. ELYRIA, OH

SURVEYED BY: N/A
CLOSURE: N/A
MAP PAGE(S): 6-120
APPROVED BY: RRM DATE: 4/10/17
SCALE: 1" = 40' PRIOR INSTRUMENT: DV 1261/159