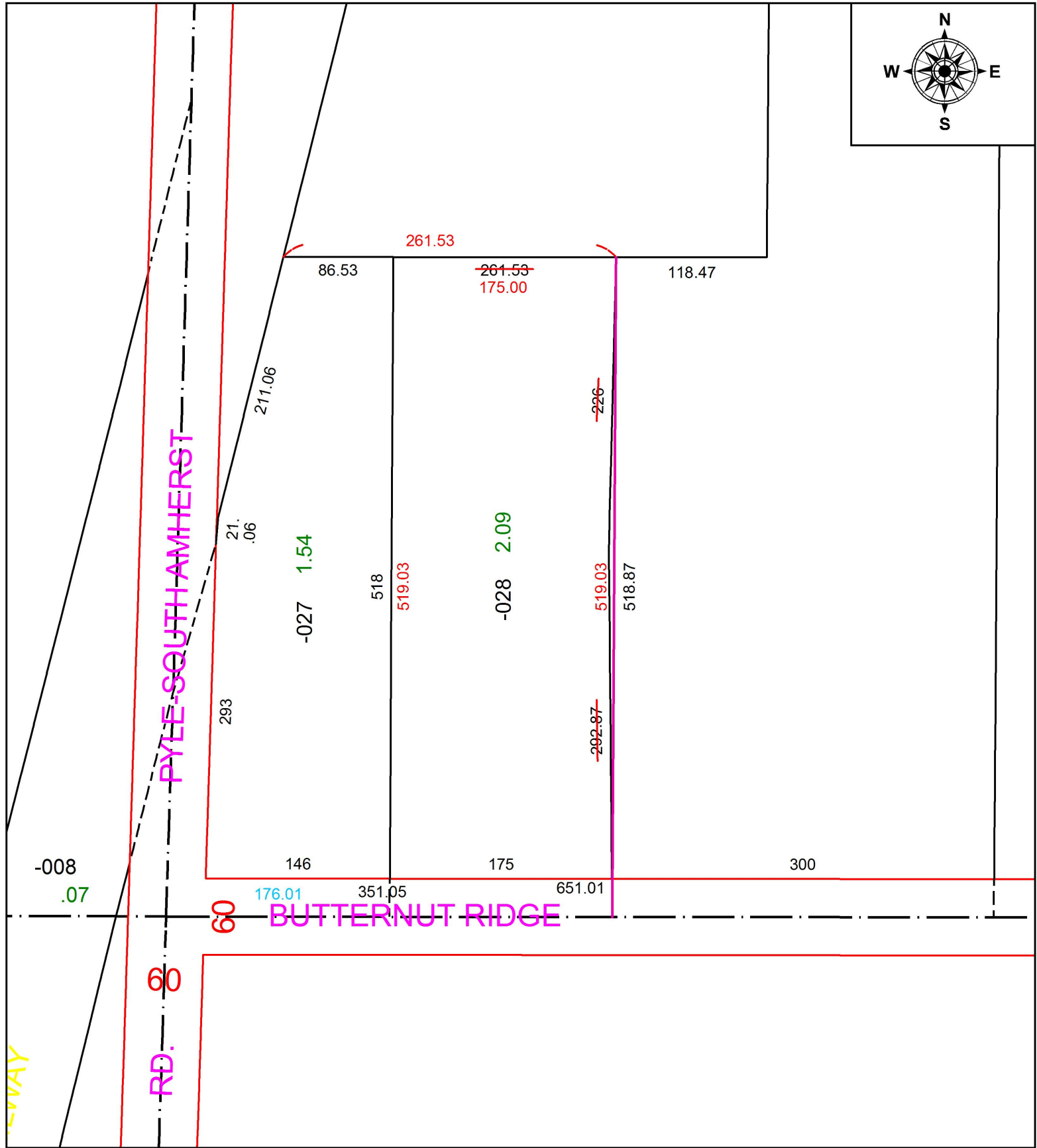
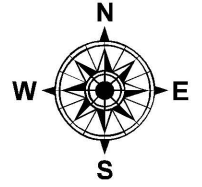


PARENT PARCEL: 09-00-054-000-028

CHILD PARCEL: DIMENSION CORRECTIONS

STARTING POINT: I.P. MON. BOX, CL OF PYLE-SOUTH AMHERST RD. & CL OF BUTTERNUT RIDGE RD.

17-03643-D



SPLITS/DEEDS PROCESSED
 LORAIN COUNTY TAX MAP DEPARTMENT
 226 MIDDLE AVE. ELYRIA, OH

SURVEYED BY: THOMAS SIMON

CLOSURE: 1:2147483648

MAP PAGE(S): 09-00-054

APPROVED BY: TJS DATE: 4/6/17

SCALE: 1" = 200 PRIOR INSTRUMENT: 2017-0618115