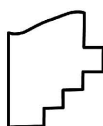
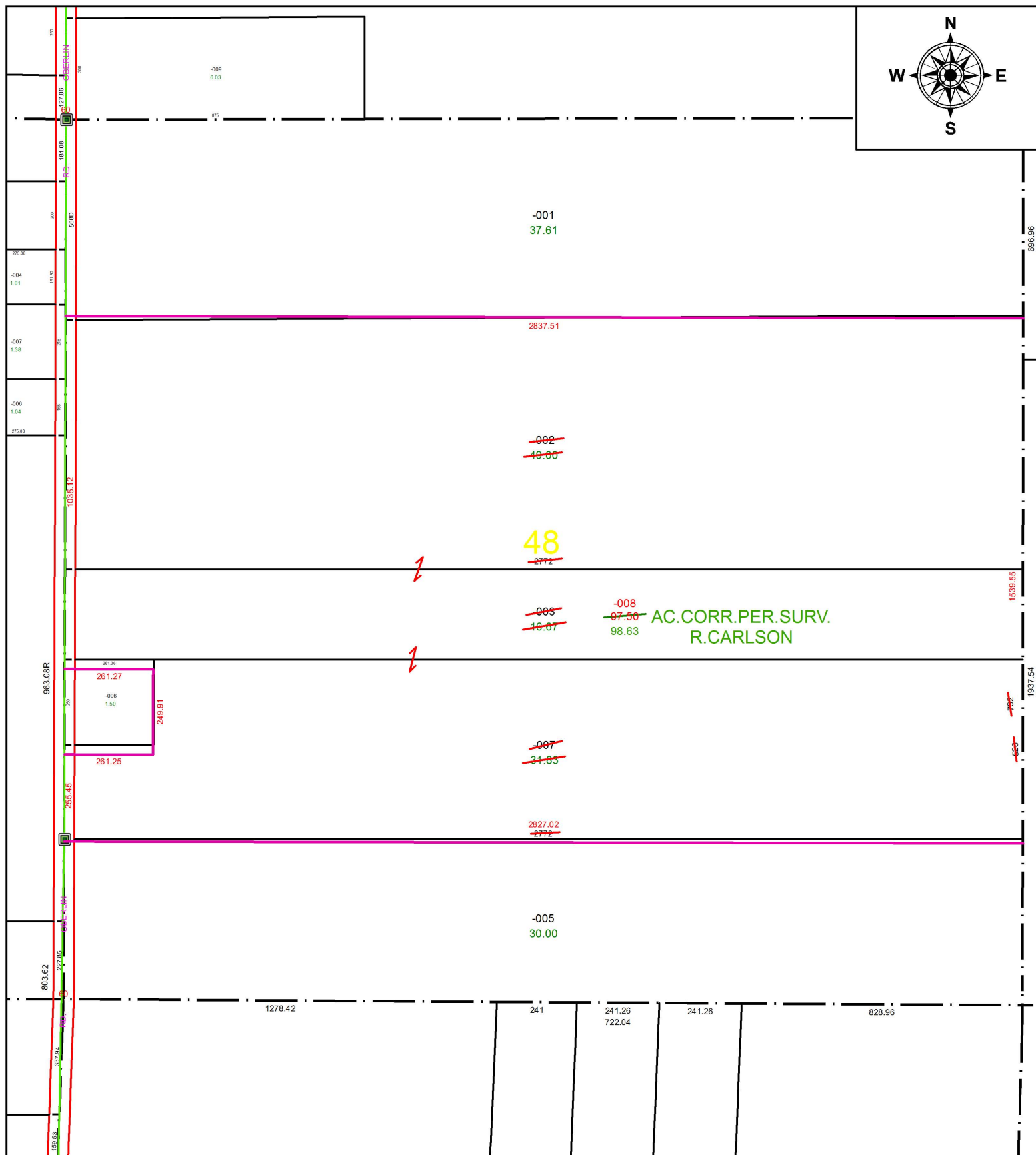
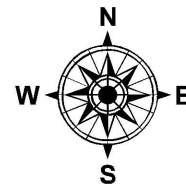


PARENT PARCEL: 09-00-048-000-002, -003, -007

CHILD PARCEL: 09-00-048-000-008

STARTING POINT: NORTHWEST CORNER OF O.L.48

17-03642



SPLITS/DEEDS PROCESSED
LORAIN COUNTY TAX MAP DEPARTMENT
226 MIDDLE AVE. ELYRIA, OH

SURVEYED BY: RICHARD D. CARLSON
CLOSURE: 1: 86,000
MAP PAGE(S): 9-00-048
APPROVED BY: RRM DATE: 2-17-17
SCALE: 1" = 375 PRIOR INSTRUMENT: 20070234834