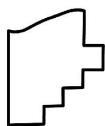
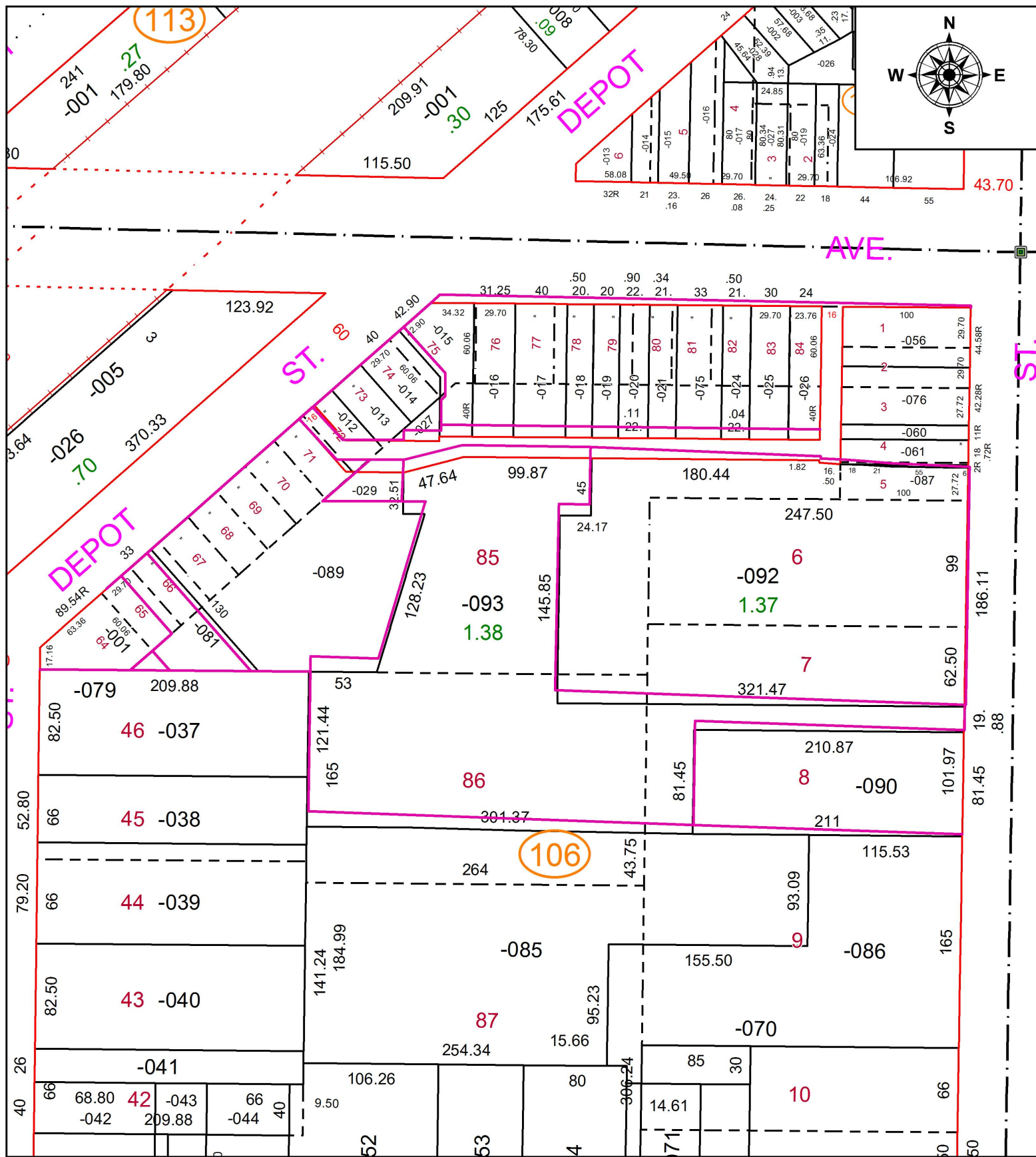


PARENT PARCEL: 18-00-027-106-029, -089, -090, -092, & -093 LINE CORR. ONLY

CHILD PARCEL: PER DV 259/509, DV 334/430, INST. # 2011-0386946, & T. SIMON SURVEY

STARTING POINT: CL OF S. MAIN ST. & CL OF W. HERRICK AVE.

17-03641-C



SPLITS/DEEDS PROCESSED

LORAIN COUNTY TAX MAP DEPARTMENT
226 MIDDLE AVE. ELYRIA, OH

SURVEYED BY: THOMAS SIMON

CLOSURE: 1:33,000

MAP PAGE(S): 18-00-027

APPROVED BY: TJS DATE: 4/13/17

SCALE: 1" = 200 PRIOR INSTRUMENT: DV 334/430