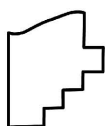
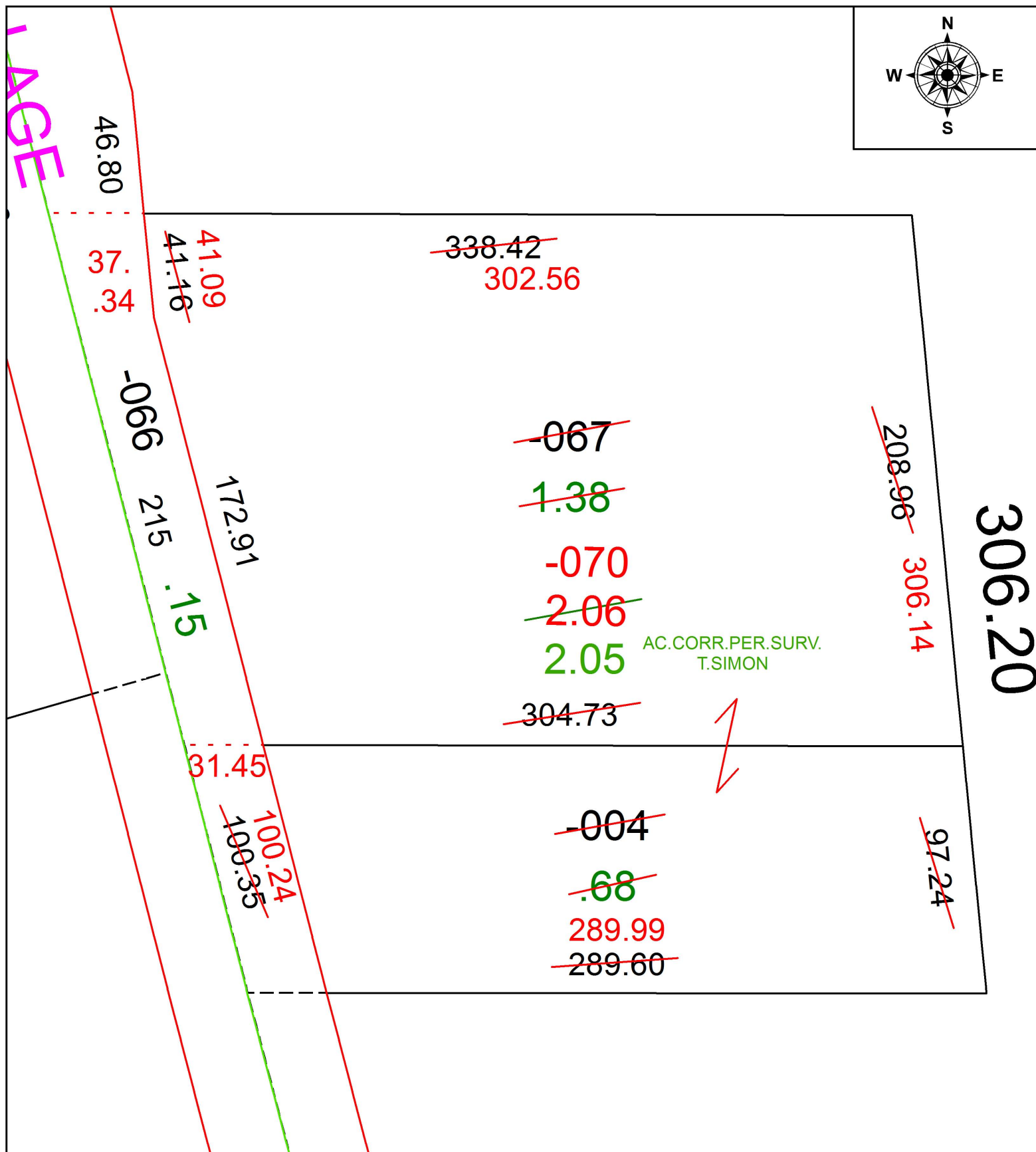
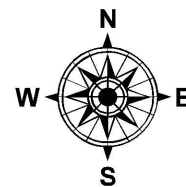


PARENT PARCEL: 12-00-035-102-004, -067

CHILD PARCEL: 12-00-035-102-070

STARTING POINT: INTERSECTION OF C/L OF S.R. 82 AND C/L OF S.R. 252

17-03640



SPLITS/DEEDS PROCESSED
LORAIN COUNTY TAX MAP DEPARTMENT
226 MIDDLE AVE. ELYRIA, OH

SURVEYED BY: THOMAS A. SIMON
CLOSURE: 1: 109,581
MAP PAGE(S): 12-00-035
APPROVED BY: RRM DATE: 2-16-17
SCALE: 1" = 50 PRIOR INSTRUMENT: 20140520517