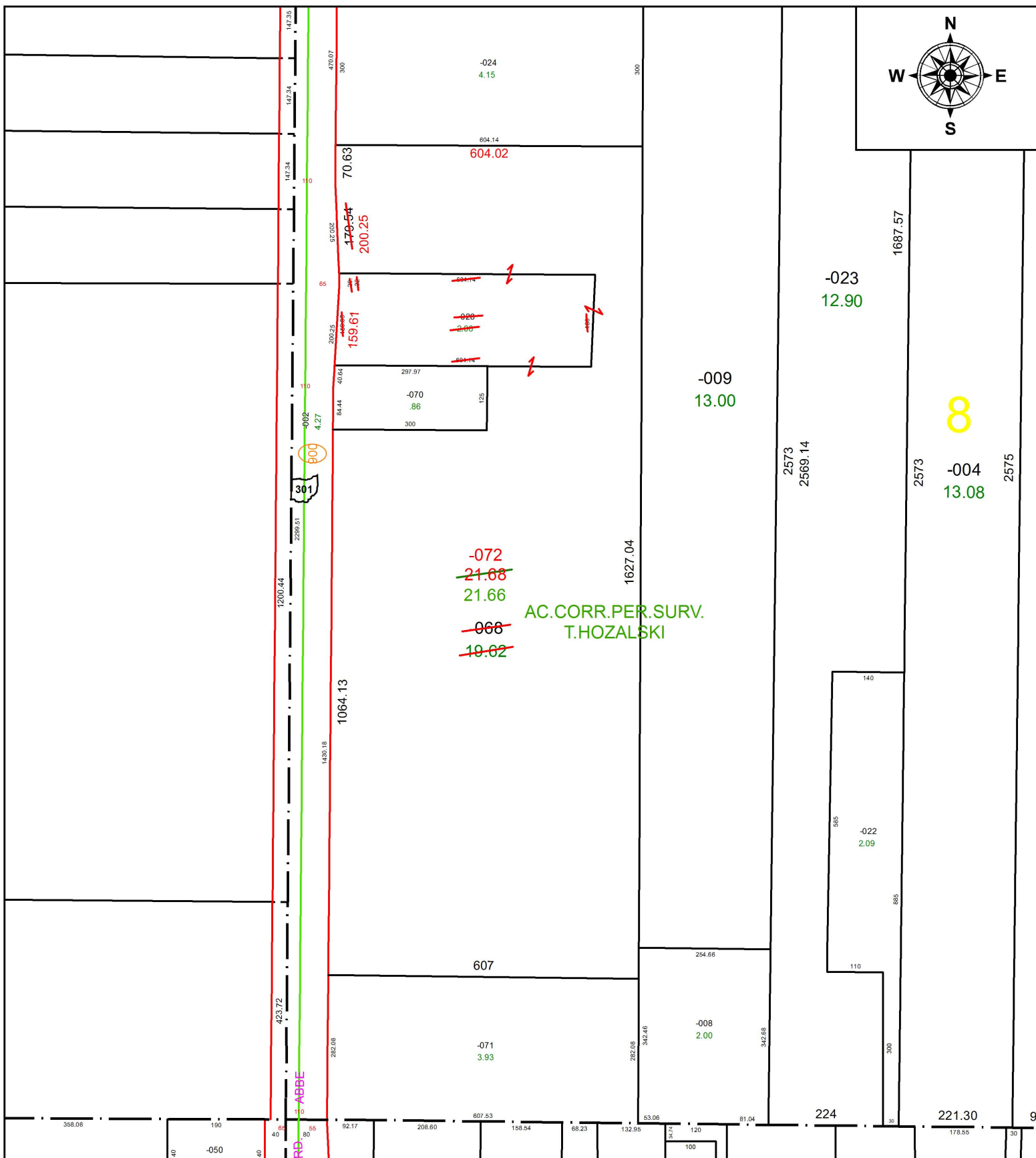


PARENT PARCEL: 03-00-008-000-026, -068

CHILD PARCEL: 03-00-008-000-072

STARTING POINT: INTERSECTION OF C/L OF ABBE RD. AND SOUTH LINE OF O.L.8

17-03639



AC.CORR.PER.SURV.  
T.HOZALSKI

8

**SPLITS/DEEDS PROCESSED**

LORAIN COUNTY TAX MAP DEPARTMENT  
226 MIDDLE AVE. ELYRIA, OH

SURVEYED BY: TIMOTHY D. HOZALSKI

CLOSURE: 1: 405,990

MAP PAGE(S): 3-00-008

APPROVED BY: RRM DATE: 2-13-17

SCALE: 1" = 250 PRIOR INSTRUMENT: 20170616816