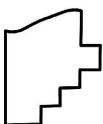
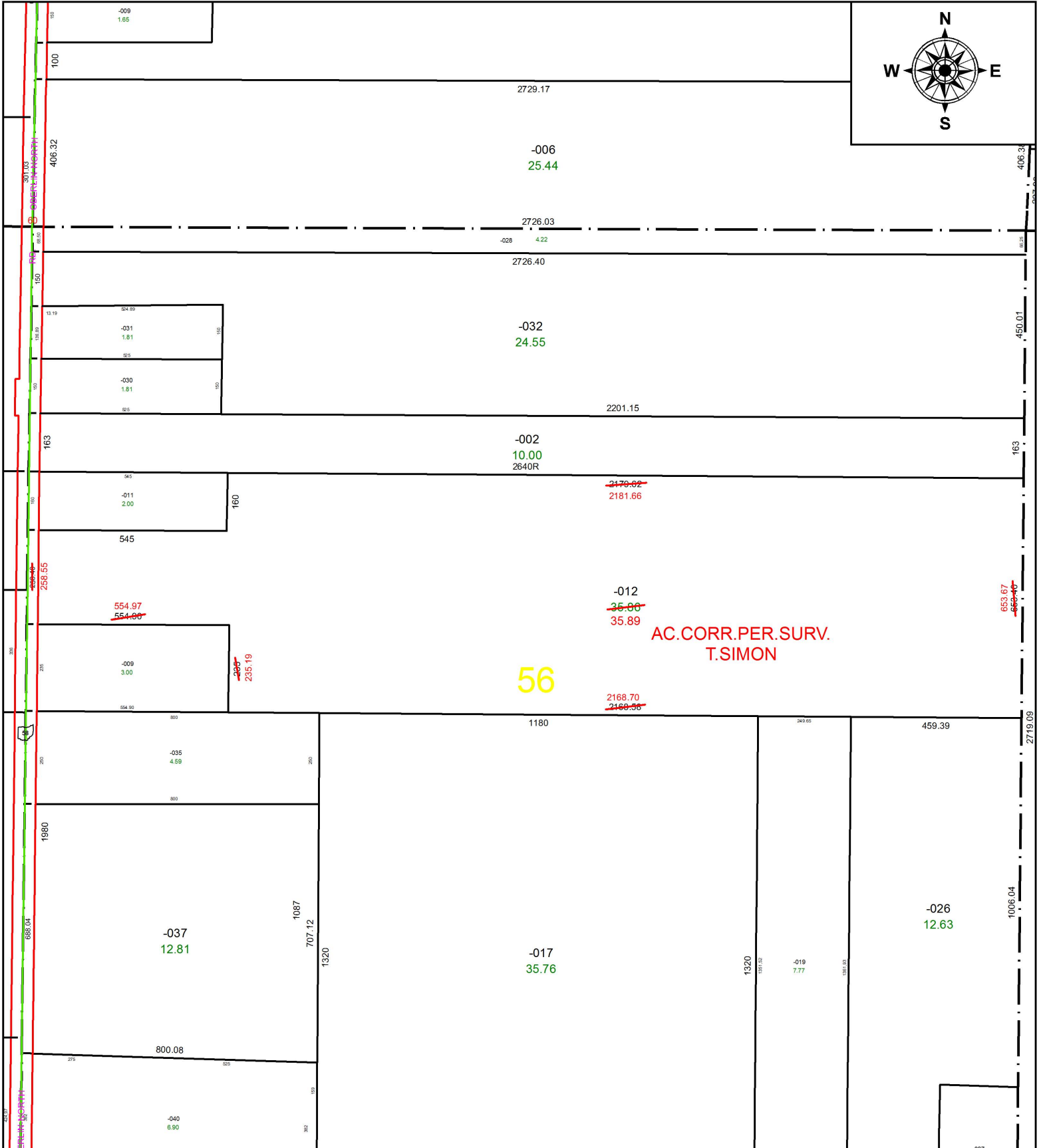
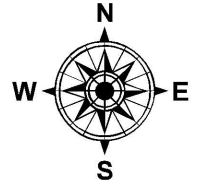


PARENT PARCEL: 09-00-056-000-012

CHILD PARCEL: XX-XX-XXX-XXX-XXX

STARTING POINT: INTERSECTION OF C/L OF S.R.58 AND C/L OF BUTTERNUT RIDGE RD.

17-03639-D



**SPLITS/DEEDS PROCESSED**  
LORAIN COUNTY TAX MAP DEPARTMENT  
226 MIDDLE AVE. ELYRIA, OH

SURVEYED BY: THOMAS A. SIMON

CLOSURE: 1: 910,841

MAP PAGE(S): 9-00-056

APPROVED BY: RRM DATE: 3-28-17

SCALE: 1" = 350 PRIOR INSTRUMENT: 20070220770