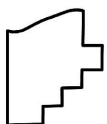
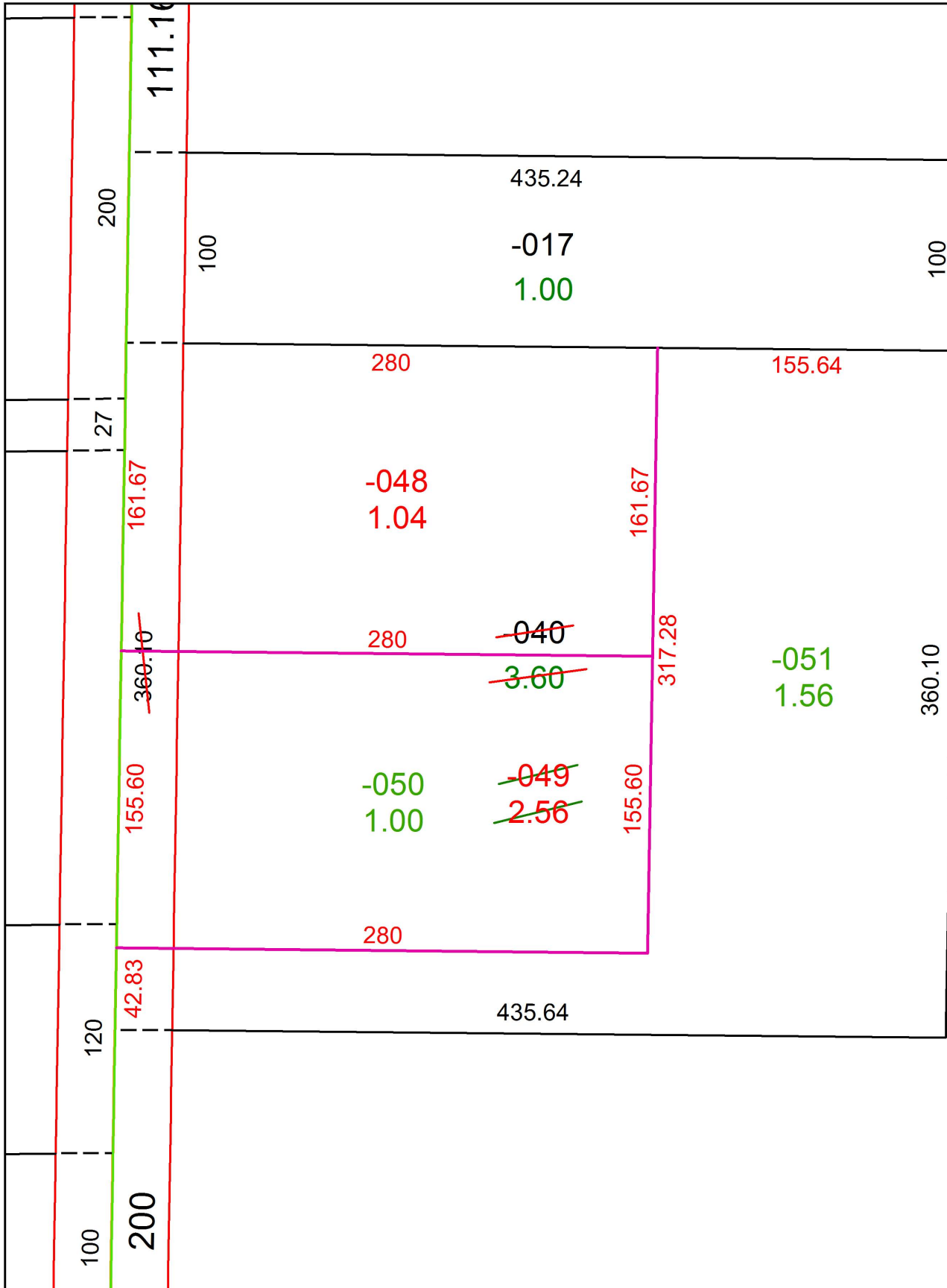


PARENT PARCEL: 11-00-096-000-040

CHILD PARCEL: 11-00-096-000-048 THRU -051

STARTING POINT: INTERSECTION OF C/L OF S.R.82 AND C/L OF S,R,57

17-03637



SPLITS/DEEDS PROCESSED
 LORAIN COUNTY TAX MAP DEPARTMENT
 226 MIDDLE AVE. ELYRIA, OH

SURVEYED BY: TREVOR A. BIXLER

CLOSURE: 1: 159,149

MAP PAGE(S): 11-00-096

APPROVED BY: RRM DATE: 2-9-17

SCALE: 1" = 75' PRIOR INSTRUMENT: 20030973773