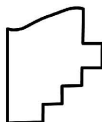
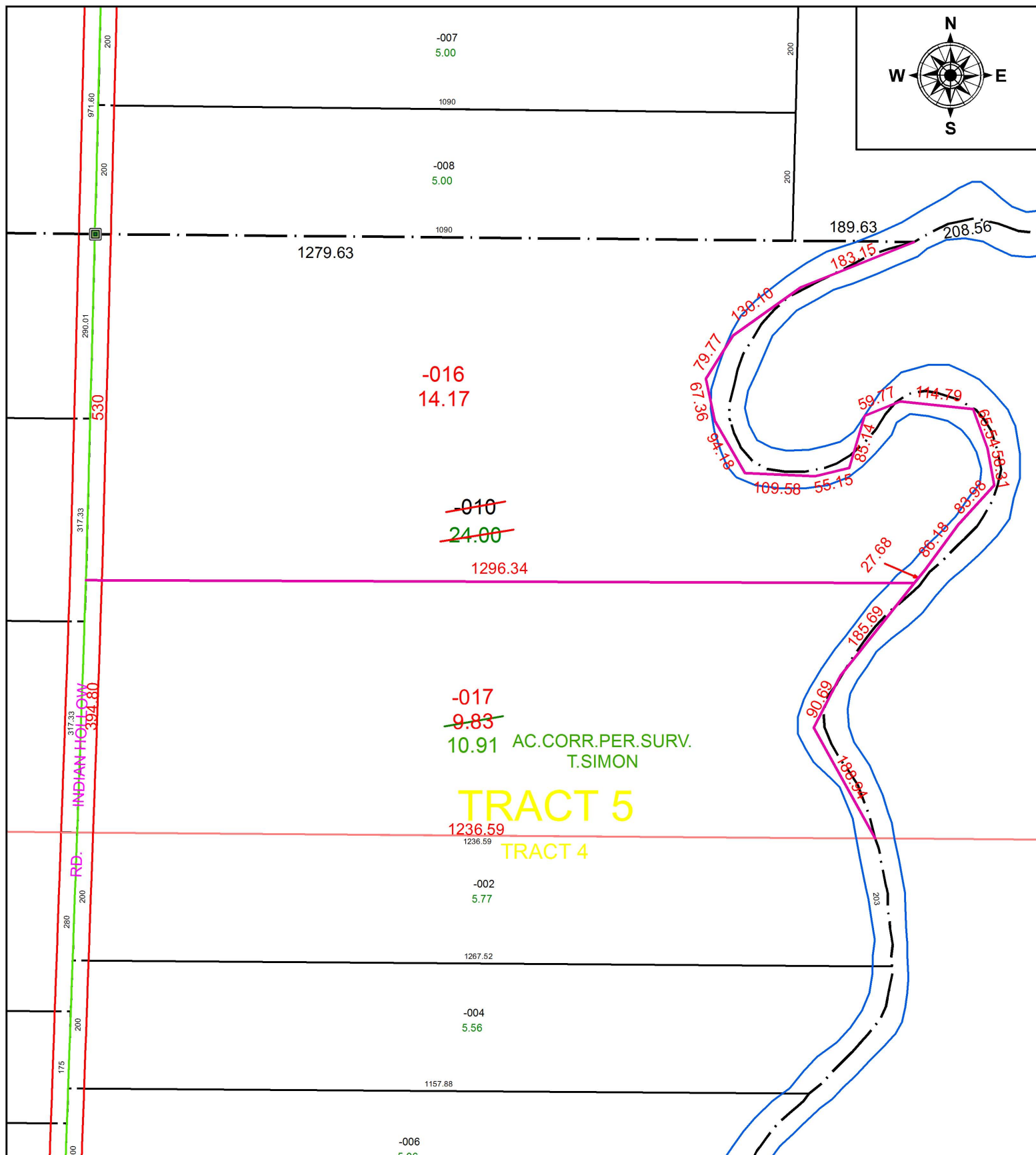
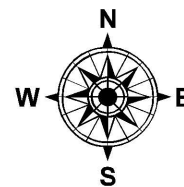


PARENT PARCEL: 19-05-008-000-010

CHILD PARCEL: 19-05-008-000-016, -017

STARTING POINT: INTERSECTION OF C/L OF INDIAN HOLLOW RD. AND SOUTH LINE OF O.L.8

17-03635



SPLITS/DEEDS PROCESSED
LORAIN COUNTY TAX MAP DEPARTMENT
226 MIDDLE AVE. ELYRIA, OH

SURVEYED BY: THOMAS A. SIMON
CLOSURE: 1: 339,409
MAP PAGE(S): 19-C
APPROVED BY: RRM DATE: 2/8/17
SCALE: 1" = 200 PRIOR INSTRUMENT: 20120429443