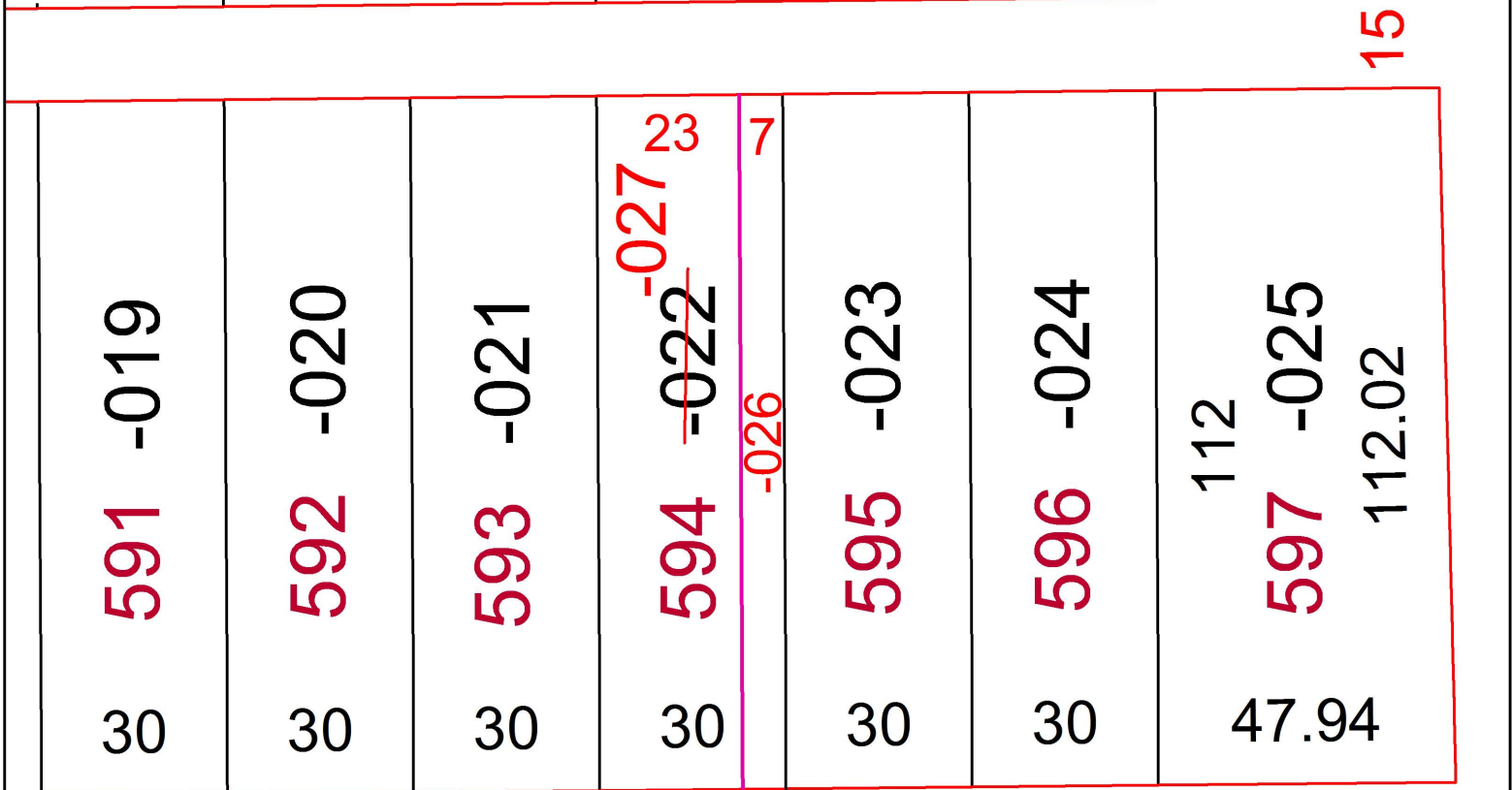
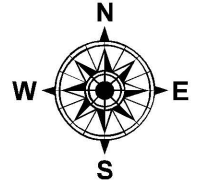
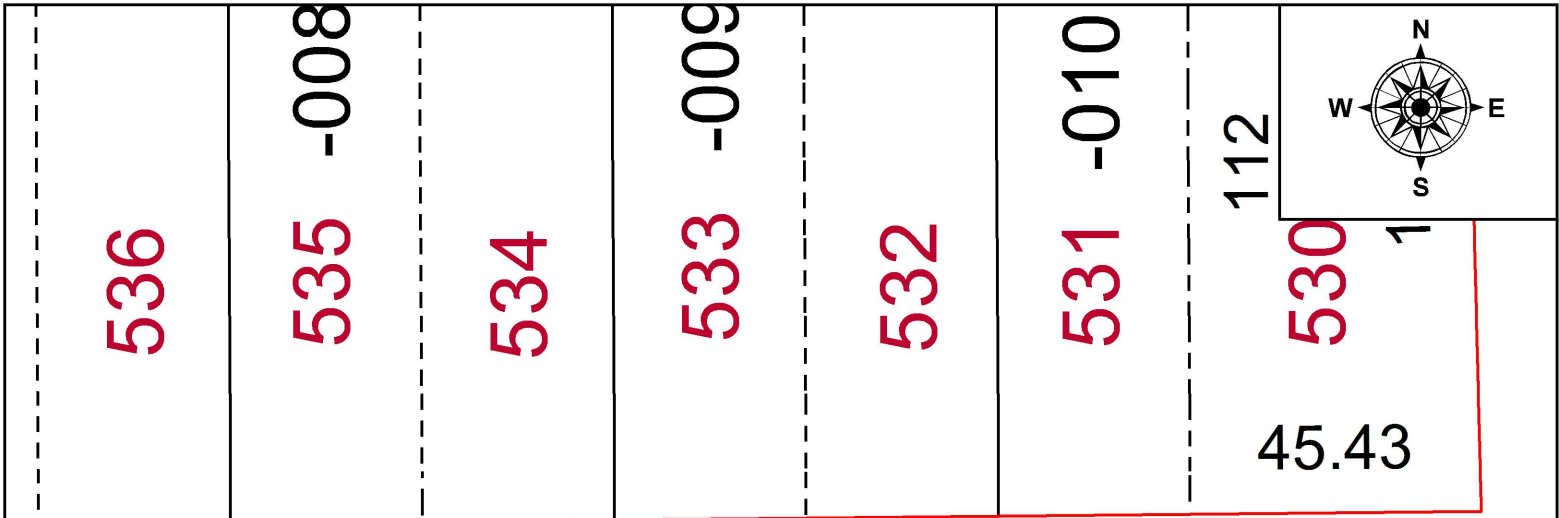


PARENT PARCEL: 06-22-017-108-022

CHILD PARCEL: 06-22-017-108-026 & -027

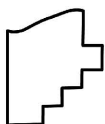
STARTING POINT: S.E. CORNER OF S/L 597

17-03630



23 7

ST. 60



SPLITS/DEEDS PROCESSED
 LORAIN COUNTY TAX MAP DEPARTMENT
 226 MIDDLE AVE. ELYRIA, OH

SURVEYED BY: PATRICK A. McGANNON
 CLOSURE: 1: 33,000
 MAP PAGE(S): 06-22-017
 APPROVED BY: TJS DATE: 1/25/17
 SCALE: 1" = 30' PRIOR INSTRUMENT: 2015-0553204