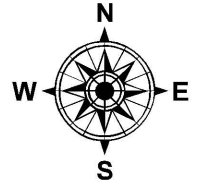


PARENT PARCEL: 05-00-024-107-003

CHILD PARCEL: XX-XX-XXX-XXX-XXX

STARTING POINT: SOUTHWEST CORNER OF S/L 154

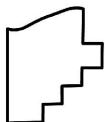
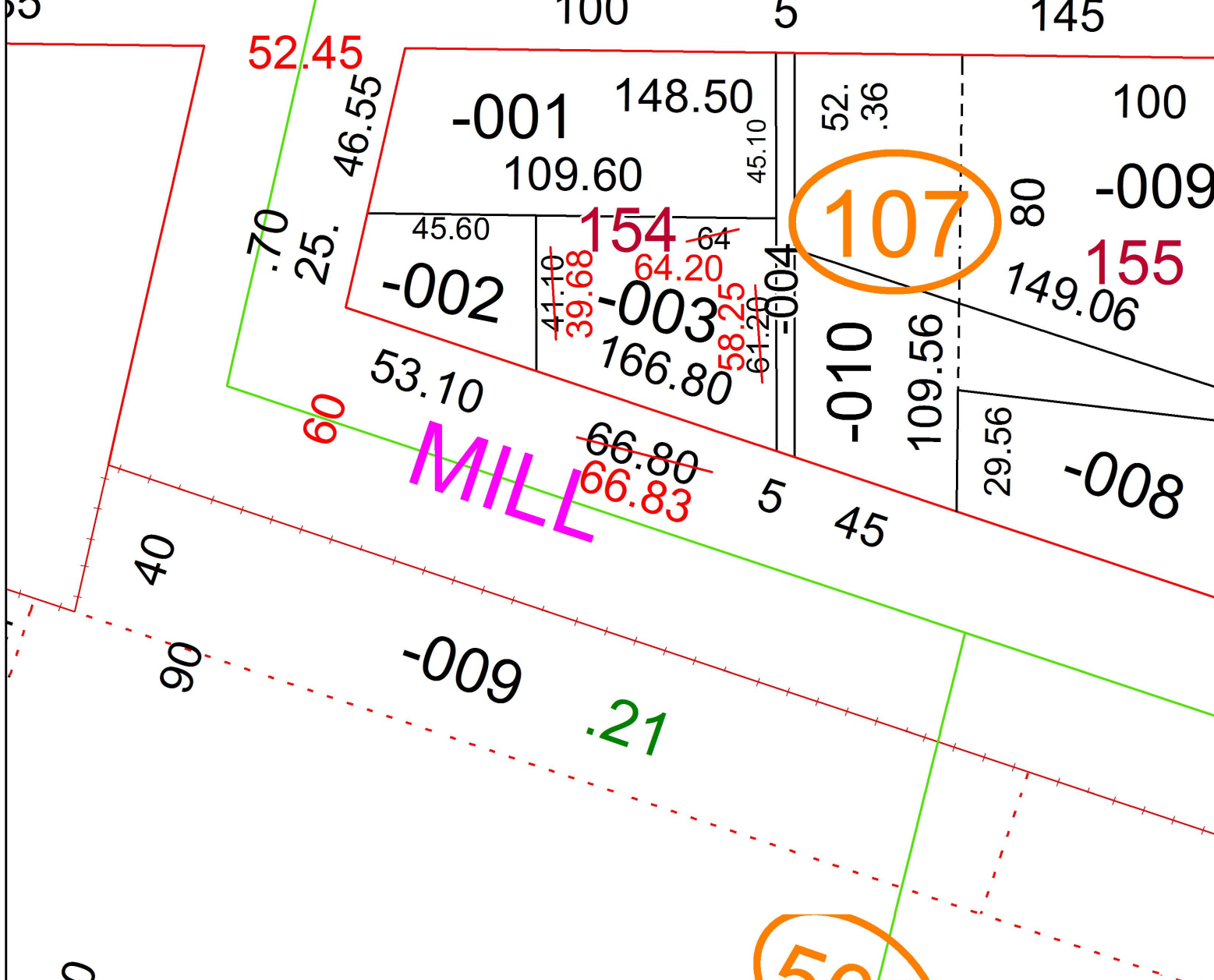
17-03628-D



**FRONTAGE AND DEPTH CORRECTION**

66.83 X 58.25  
~~66.80 X 61~~  
 CORR. PER SURVEY T.SIMON

ENNEY



**SPLITS/DEEDS PROCESSED**  
 LORAIN COUNTY TAX MAP DEPARTMENT  
 226 MIDDLE AVE. ELYRIA, OH

SURVEYED BY: THOMAS A. SIMON  
 CLOSURE: 1: 119,404  
 MAP PAGE(S): 5-00-024  
 APPROVED BY: RRM DATE: 3-15-17  
 SCALE: 1" = 40' PRIOR INSTRUMENT: 20140505496