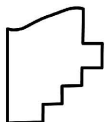
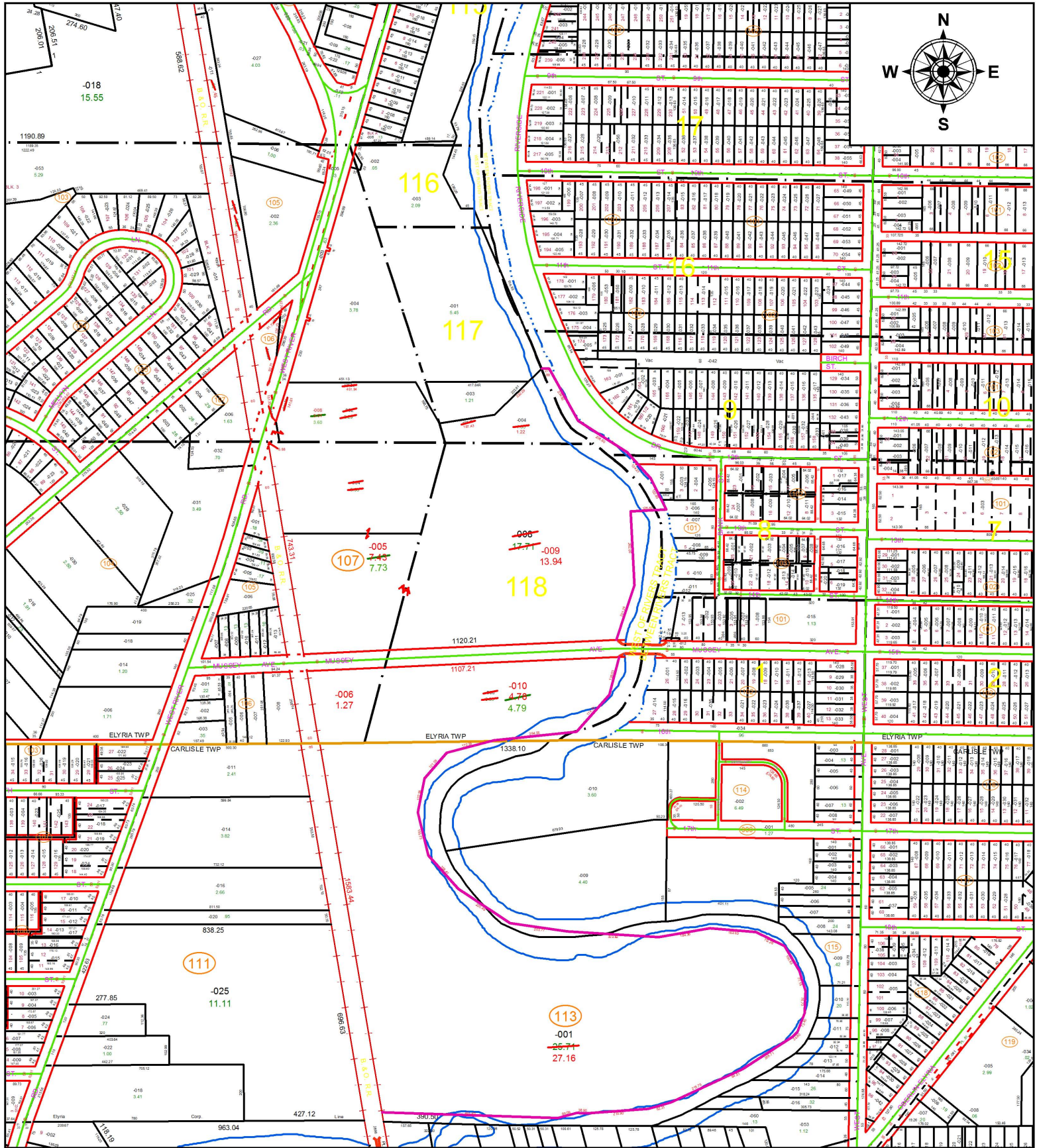


PARENT PARCEL: 06-24-007-107-004, 06-24-008-108-002, 06-24-008-105-007, 06-24-009-108-011, 06-24-117-000-004, 06-24-118-000-008, -006, 10-00-003-113-001

CHILD PARCEL: 06-24-007-107-005, -006, 06-24-008-105-008, 06-24-009-108-011, 06-24-117-000-004, 06-24-118-000-009, -010, 10-00-003-113-001

STARTING POINT: INTERSECTION OF SOUTH LINE OF MUSSEY AVE AND EAST LINE OF WEST RIVER RD.

17-03625-D



SPLITS/DEEDS PROCESSED
 LORAIN COUNTY TAX MAP DEPARTMENT
 226 MIDDLE AVE. ELYRIA, OH

SURVEYED BY: DAVID J. KUETHE
 CLOSURE: 1: 400,689
 MAP PAGE(S): 6-136
 APPROVED BY: RRM DATE: 3-10-17
 SCALE: 1" = 450 PRIOR INSTRUMENT: 20030881744