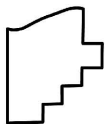
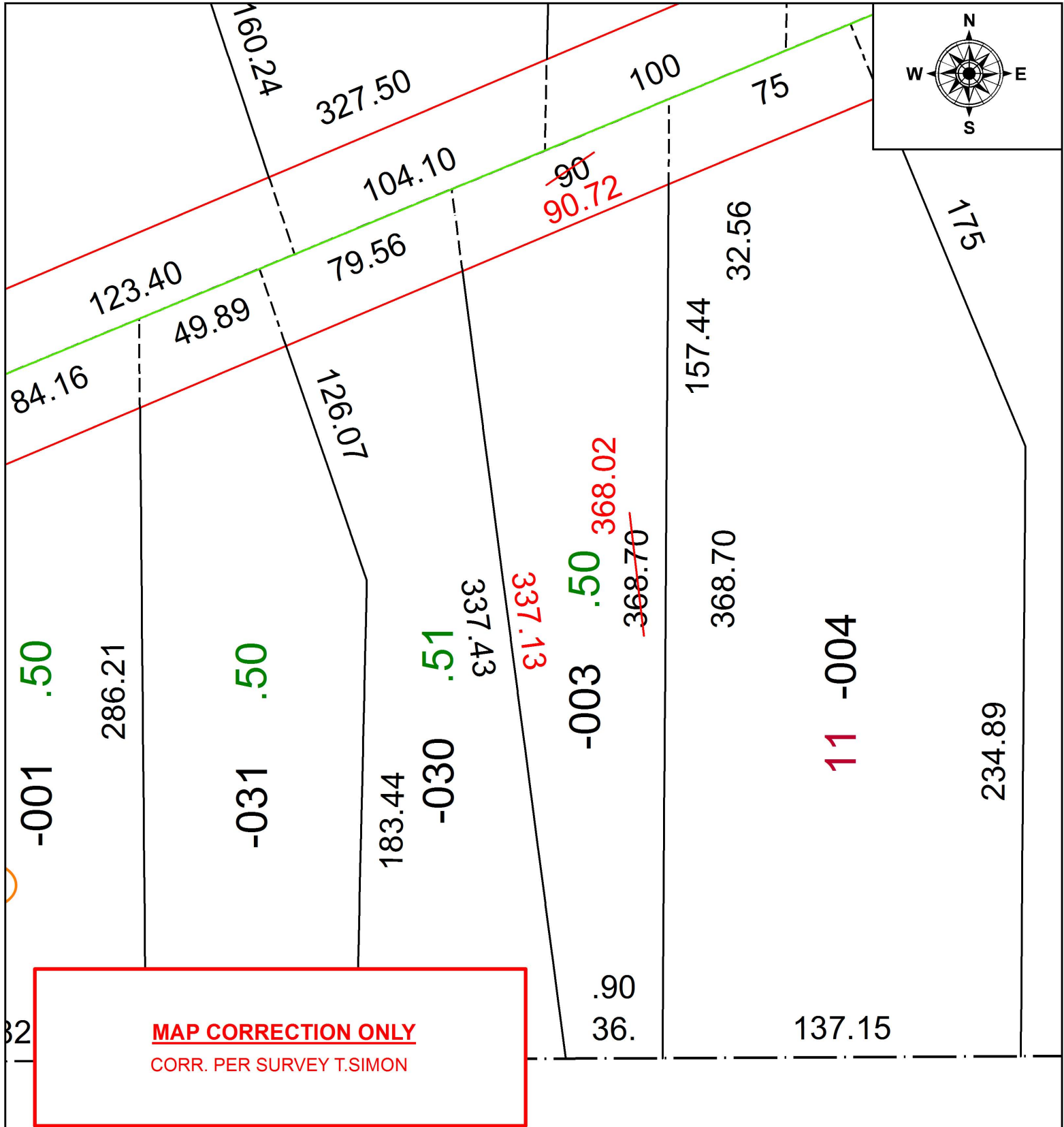


PARENT PARCEL: 10-00-007-109-003

CHILD PARCEL: XX-XX-XXX-XXX-XXX

STARTING POINT: NORTHWEST CORNER OF S/L 11 IN LEROY FORTHOFFER SUB. NO.1

17-03623-D



**SPLITS/DEEDS PROCESSED**  
LORAIN COUNTY TAX MAP DEPARTMENT  
226 MIDDLE AVE. ELYRIA, OH

SURVEYED BY:	THOMAS A. SIMON
CLOSURE:	1: 396,196
MAP PAGE(S):	10-00-007
APPROVED BY:	RRM DATE: 3-6-17
SCALE:	1" = 50
PRIOR INSTRUMENT:	20150551832