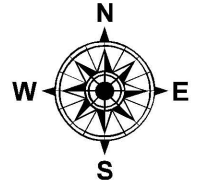


PARENT PARCEL: 03-00-049-102-014

CHILD PARCEL: 03-00-049-102-014, -024

STARTING POINT: NORTHWEST CORNER OF LAND CONVEYED TO ARTHUR W. & ALICE D. LIPSIN

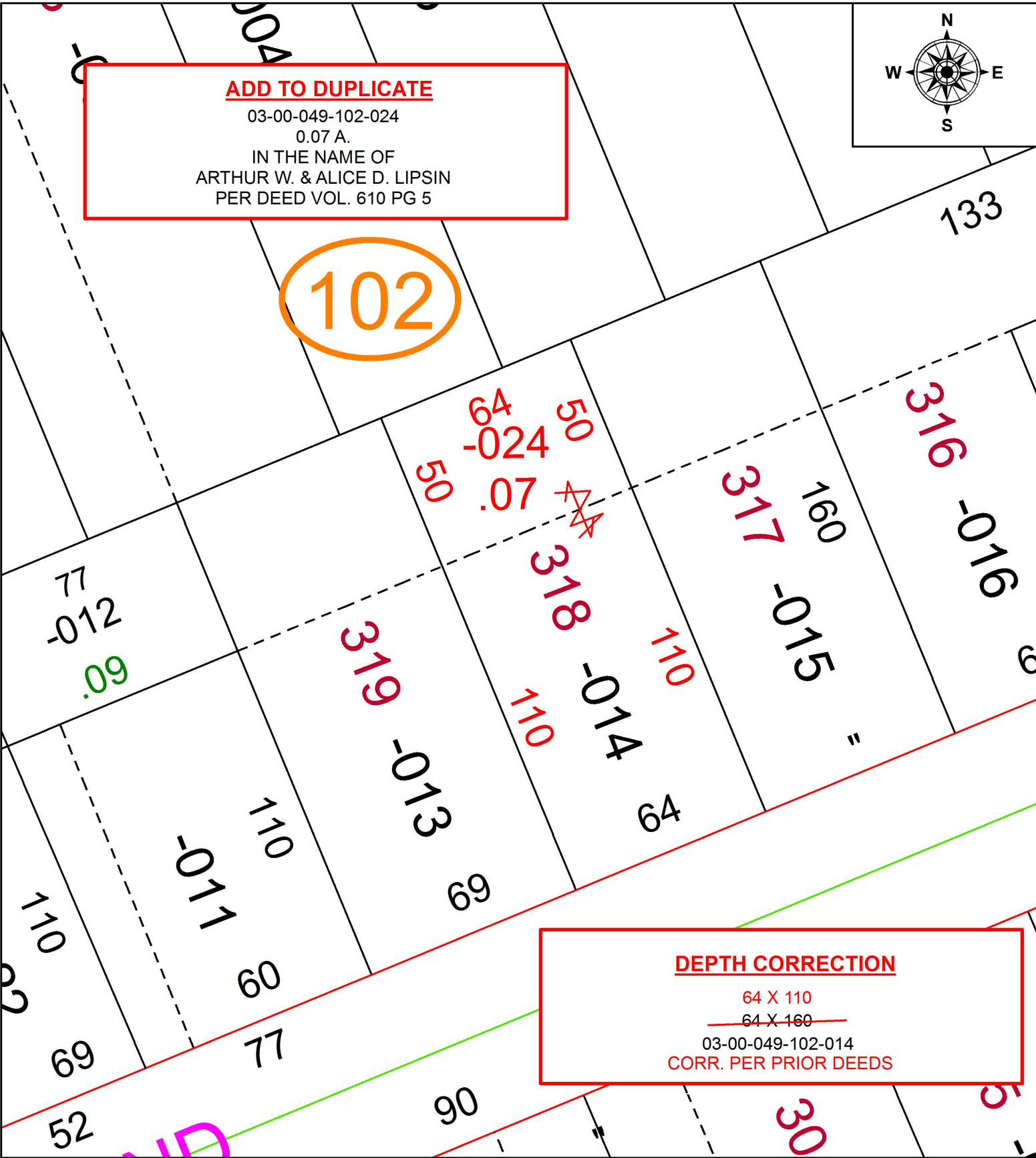
17-03622-C



ADD TO DUPLICATE

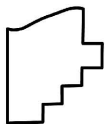
03-00-049-102-024
0.07 A.
IN THE NAME OF
ARTHUR W. & ALICE D. LIPSIN
PER DEED VOL. 610 PG 5

102



DEPTH CORRECTION

64 X 110
~~64 X 160~~
03-00-049-102-014
CORR. PER PRIOR DEEDS



SPLITS/DEEDS PROCESSED
LORAIN COUNTY TAX MAP DEPARTMENT
226 MIDDLE AVE. ELYRIA, OH

SURVEYED BY: _____ N/A
CLOSURE: _____ N/A
MAP PAGE(S): _____ 3-00-049
APPROVED BY: _____ RRM DATE: _____ 3-3-17
SCALE: _____ 1" = 40 PRIOR INSTRUMENT: _____ DV 610 PG 5