

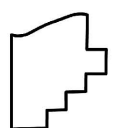
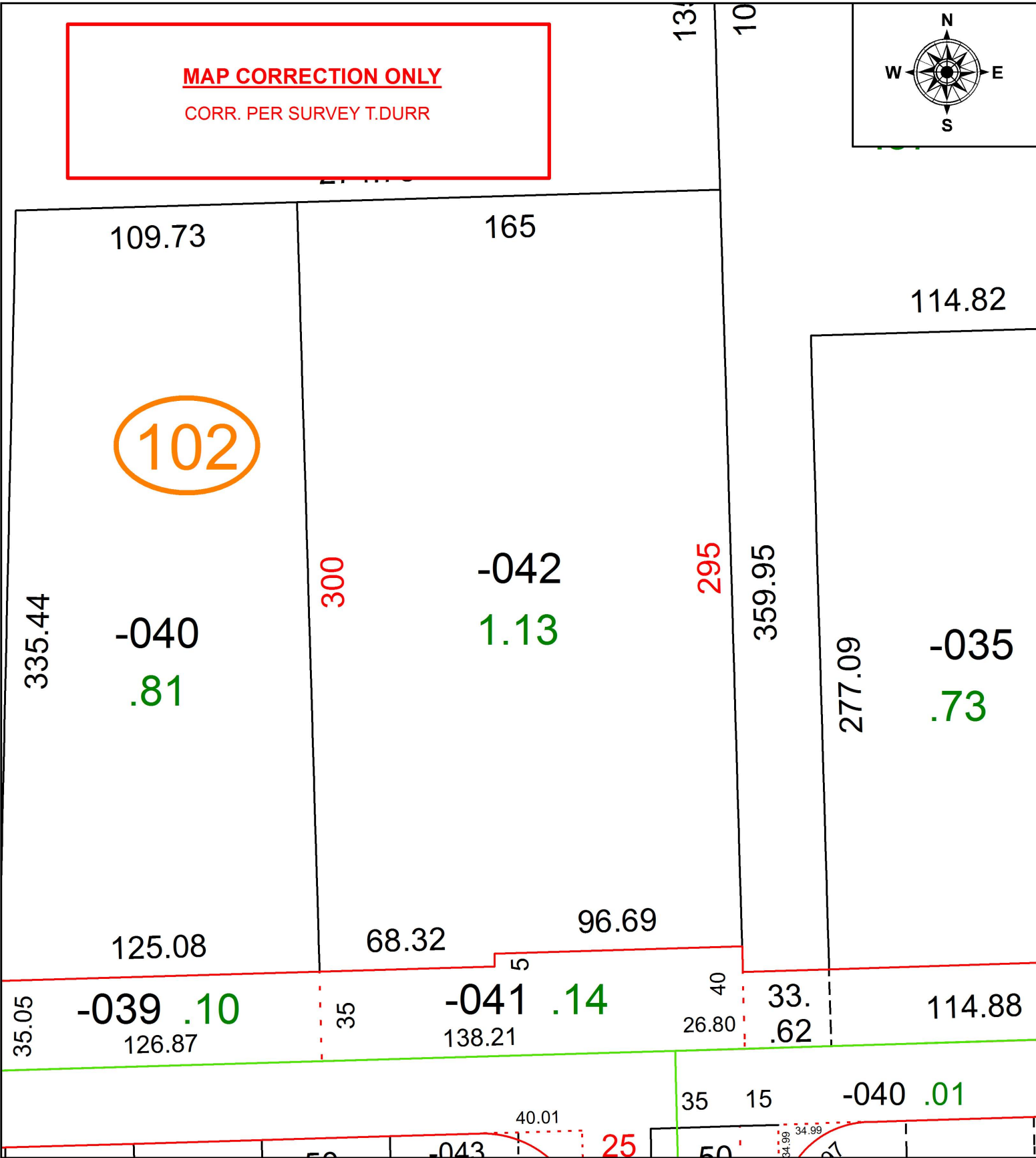
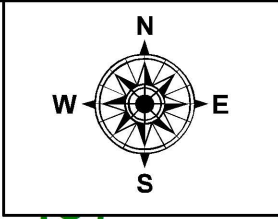
PARENT PARCEL: 06-23-016-102-042

CHILD PARCEL: XX-XX-XXX-XXX-XXX

STARTING POINT: INTERSECTION OF C/L OF GRISWOLD RD. AND C/L OF TILLOTSON ST.

17-03618-D

MAP CORRECTION ONLY
CORR. PER SURVEY T.DURR



SPLITS/DEEDS PROCESSED
LORAIN COUNTY TAX MAP DEPARTMENT
226 MIDDLE AVE. ELYRIA, OH

SURVEYED BY: TIMOTHY R. DURR
CLOSURE: 1: 93,000
MAP PAGE(S): 6-46
APPROVED BY: RRM DATE: 3-6-17
SCALE: 1" = 50' PRIOR INSTRUMENT: DV 1223/762