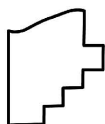
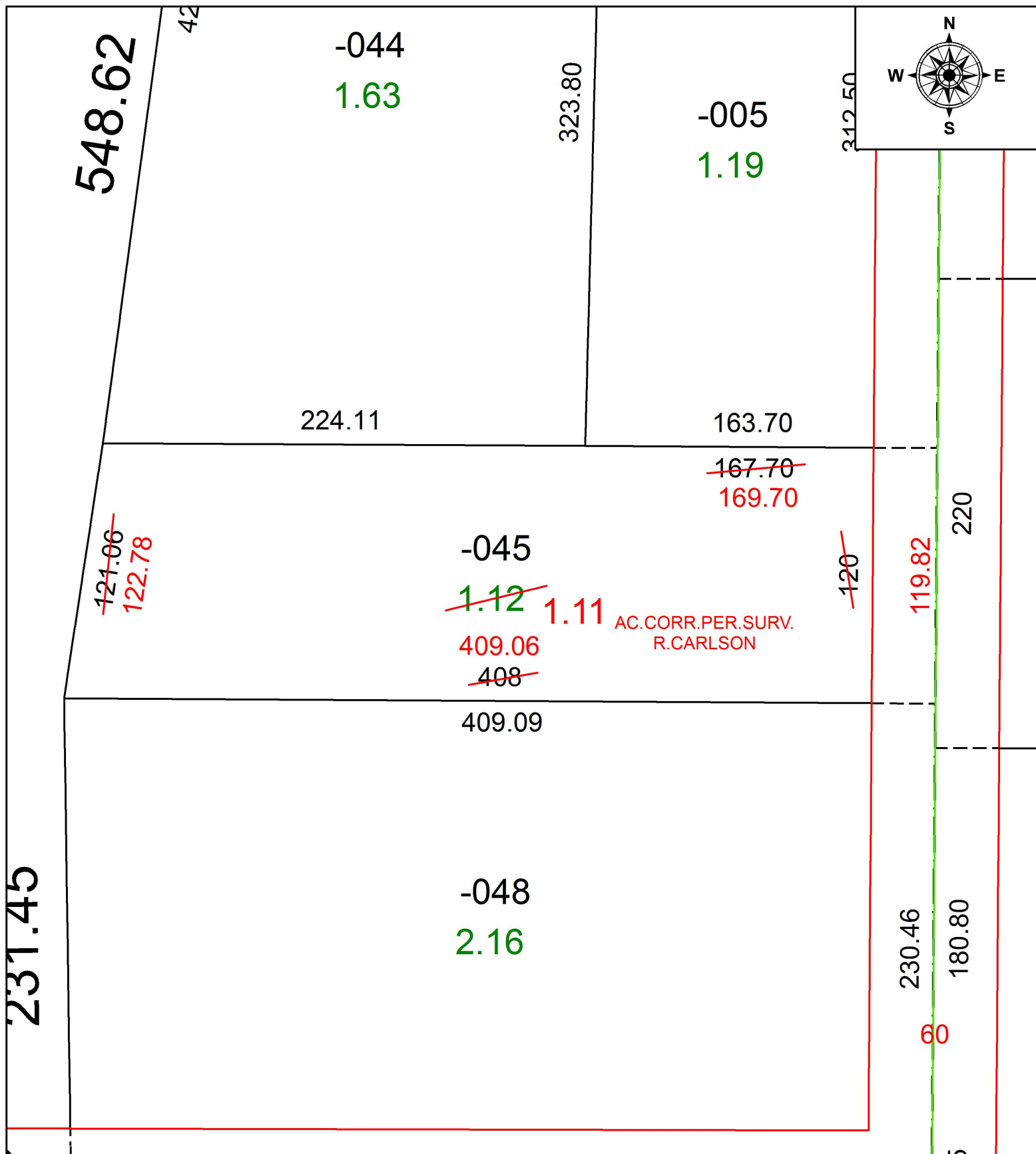


PARENT PARCEL: 15-00-020-000-045

CHILD PARCEL: XX-XX-XXX-XXX-XXX

STARTING POINT: INTERSECTION OF C/L OF DIAGONAL RD. AND C/L OF KIPTON NICKLE PLATE

17-03615-A



SPLITS/DEEDS PROCESSED
LORAIN COUNTY TAX MAP DEPARTMENT
226 MIDDLE AVE. ELYRIA, OH

SURVEYED BY: RICHARD D. CARLSON

CLOSURE: 1: 254,280

MAP PAGE(S): 15-00-020

APPROVED BY: RRM DATE: 2-24-17

SCALE: 1" = 60 PRIOR INSTRUMENT: 20080246352