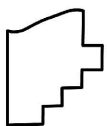
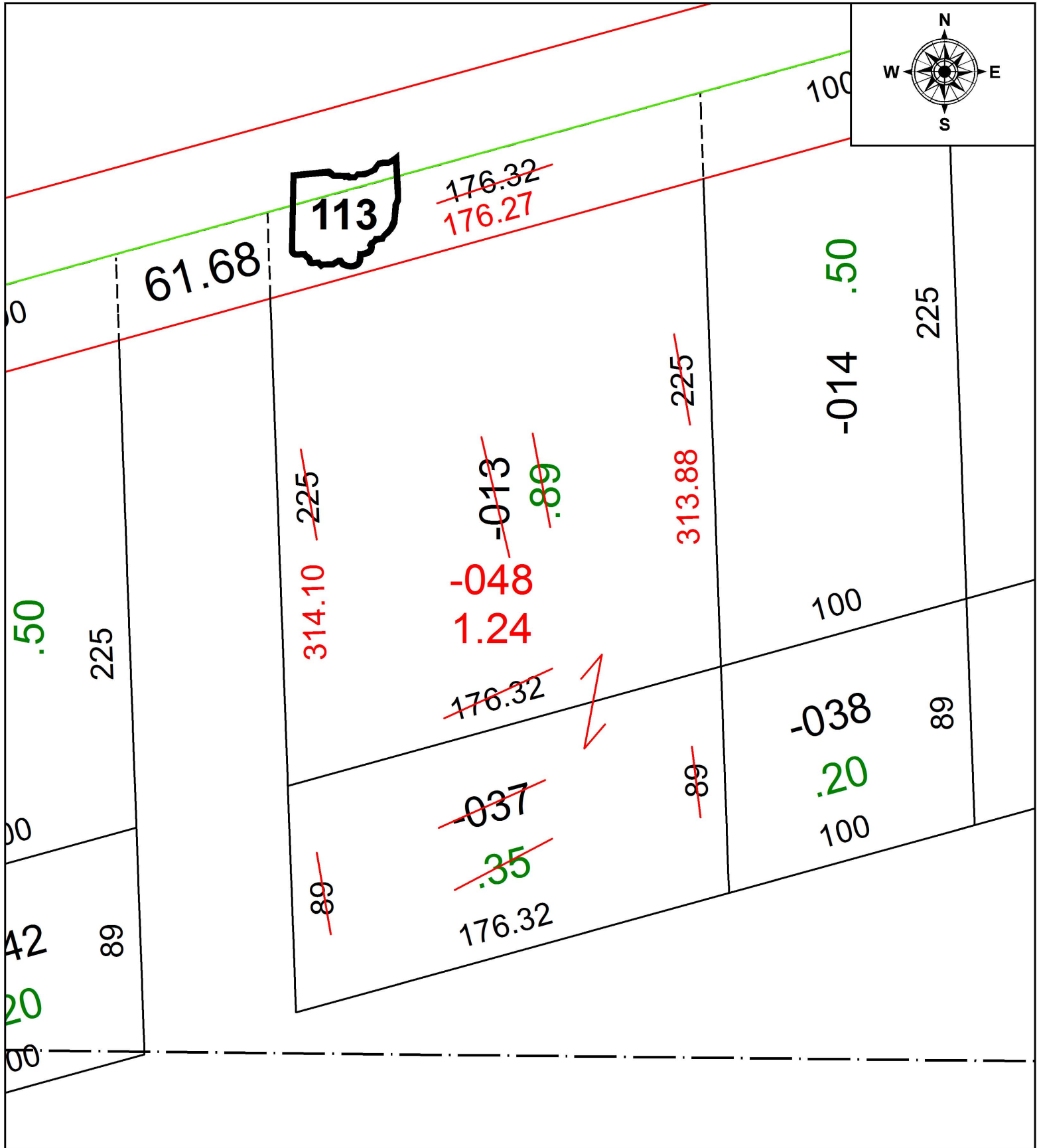


PARENT PARCEL: 08-00-093-000-013, -037

CHILD PARCEL: 08-00-093-000-048

STARTING POINT: INTERSECTION OF C/L OF BAIRD RD. AND C/L OF S.R. 113

17-03610-D



**SPLITS/DEEDS PROCESSED**  
 LORAIN COUNTY TAX MAP DEPARTMENT  
 226 MIDDLE AVE. ELYRIA, OH

SURVEYED BY: SCOTT J. CASEY  
 CLOSURE: 1: 150,647  
 MAP PAGE(S): 8-00-093  
 APPROVED BY: RRM DATE: 2-15-17  
 SCALE: 1" = 50 PRIOR INSTRUMENT: 20150570181