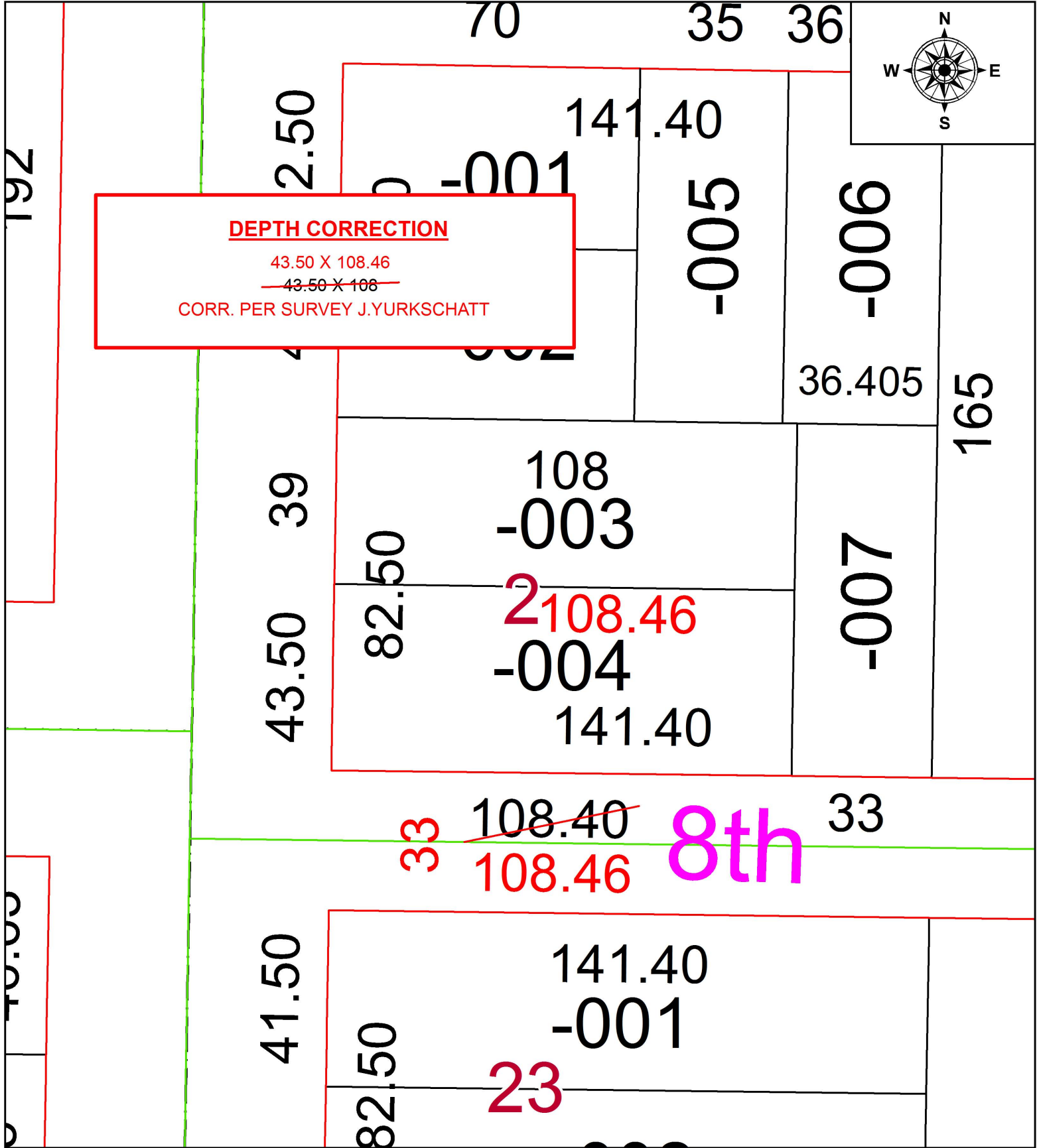


PARENT PARCEL: 06-26-023-101-004

CHILD PARCEL: XX-XX-XXX-XXX-XXX

STARTING POINT: SOUTHWEST CORNER OF S/L 2

17-03607-D



**SPLITS/DEEDS PROCESSED**  
 LORAIN COUNTY TAX MAP DEPARTMENT  
 226 MIDDLE AVE. ELYRIA, OH

SURVEYED BY: JAMES P. YURKSCHATT  
 CLOSURE: 1: 2147483648  
 MAP PAGE(S): 6-137  
 APPROVED BY: RRM DATE: 2-13-17  
 SCALE: 1" = 30 PRIOR INSTRUMENT: 20160604478