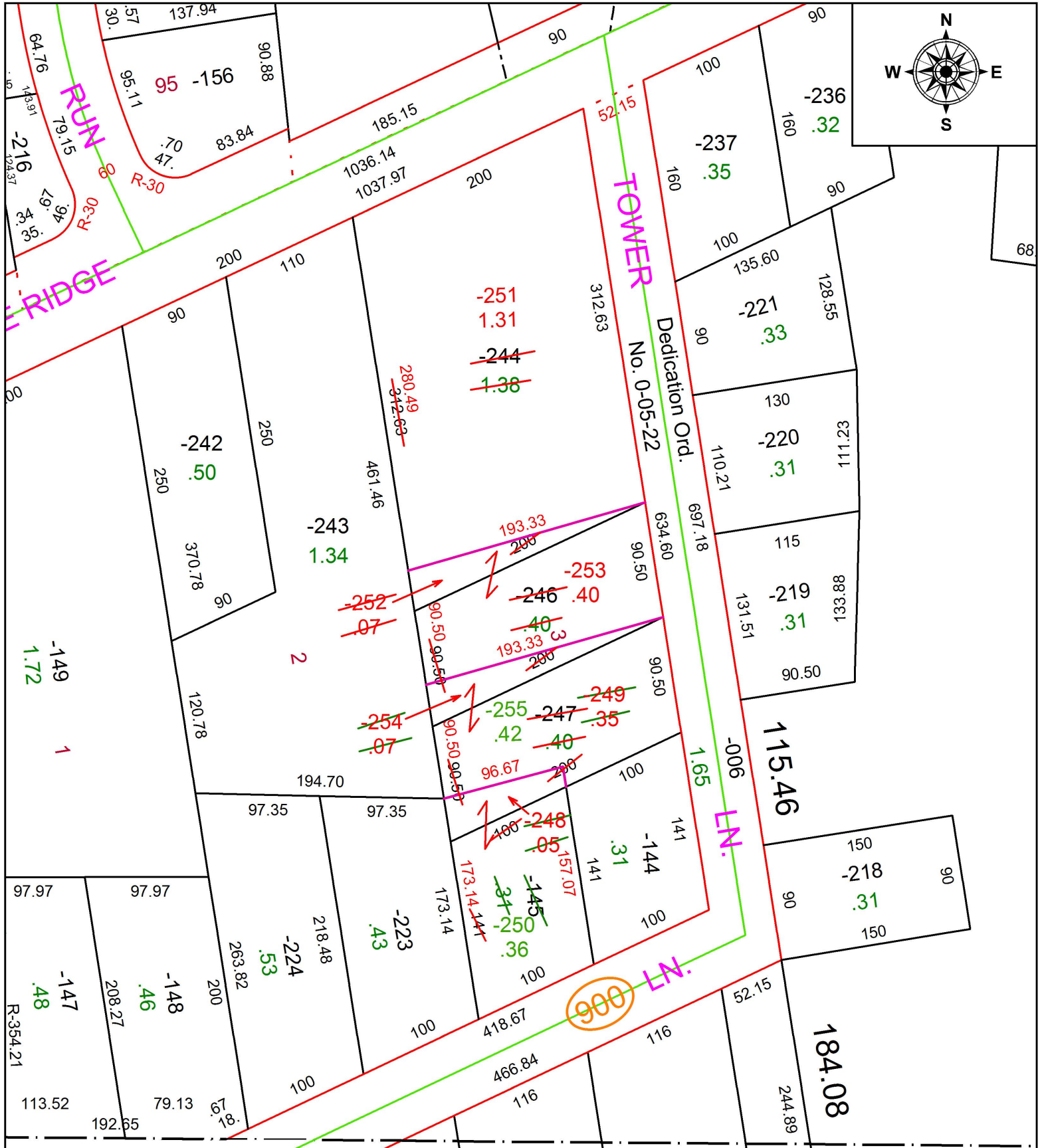


PARENT PARCEL: 05-00-006-000-145, -244, -246, -247

CHILD PARCEL: 05-00-006-000-248 THRU -255

STARTING POINT: SOUTHWEST CORNER OF S/L 3 IN MIDDLE RIDGE SUB.

16-03605



SPLITS/DEEDS PROCESSED

LORAIN COUNTY TAX MAP DEPARTMENT
226 MIDDLE AVE. ELYRIA, OH

SURVEYED BY: TIMOTHY D. HOZALSKI

CLOSURE: 1: 105,112

MAP PAGE(S): 5-00-006

APPROVED BY: RRM DATE: 12-1-16

SCALE: 1" = 100 PRIOR INSTRUMENT: 20160597885