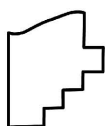
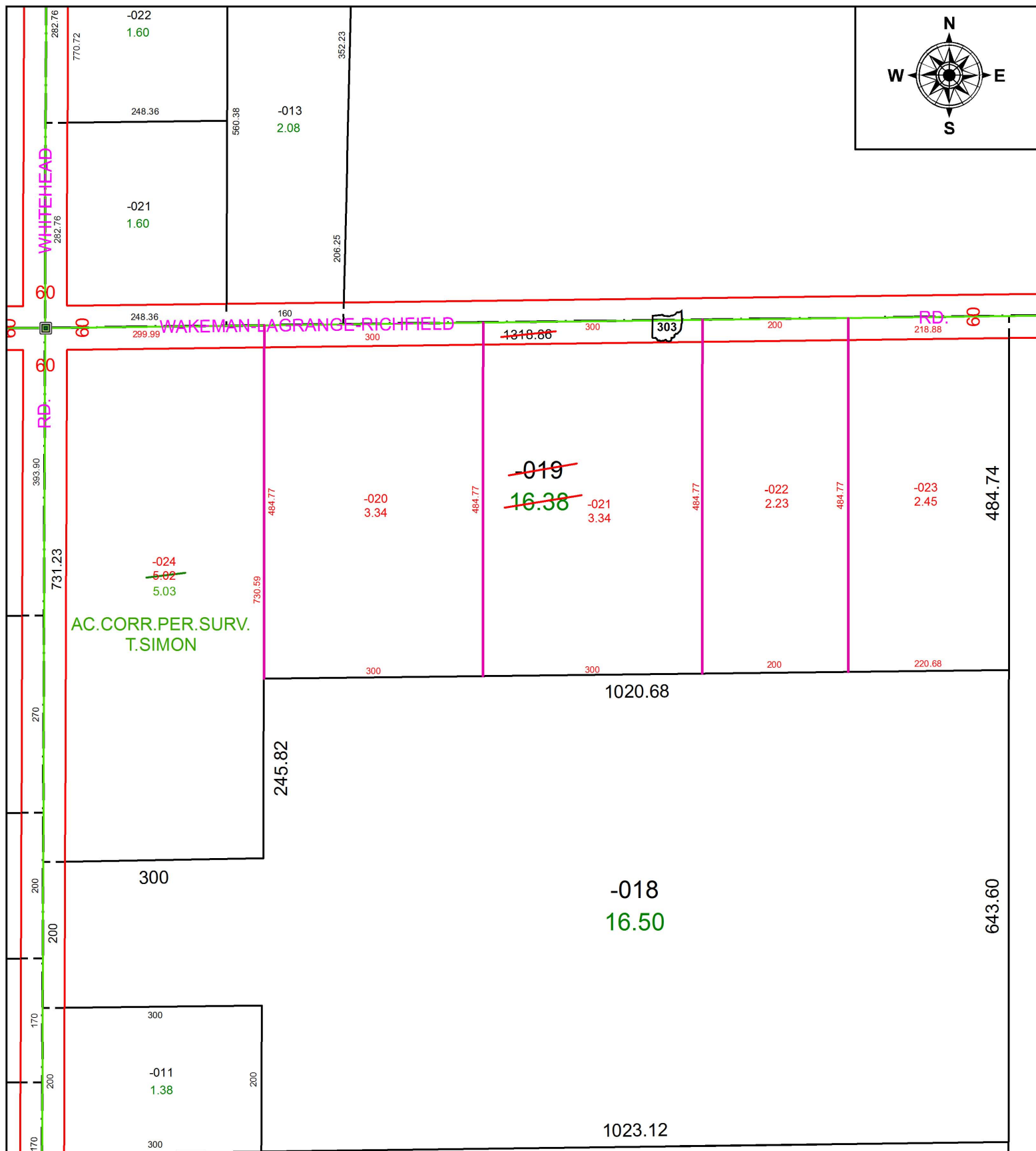


PARENT PARCEL: 15-00-057-000-019

CHILD PARCEL: 15-00-057-000-020 THRU -024

STARTING POINT: INTERSECTION OF C/L OF S.R. 303 AND C/L OF WHITEHEAD RD.

16-03602



SPLITS/DEEDS PROCESSED
LORAIN COUNTY TAX MAP DEPARTMENT
226 MIDDLE AVE. ELYRIA, OH

SURVEYED BY: THOMAS A. SIMON
CLOSURE: 1: 233,863
MAP PAGE(S): 15-00-057
APPROVED BY: RRM DATE: 11-29-16
SCALE: 1" = 175 PRIOR INSTRUMENT: 20150560905