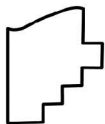
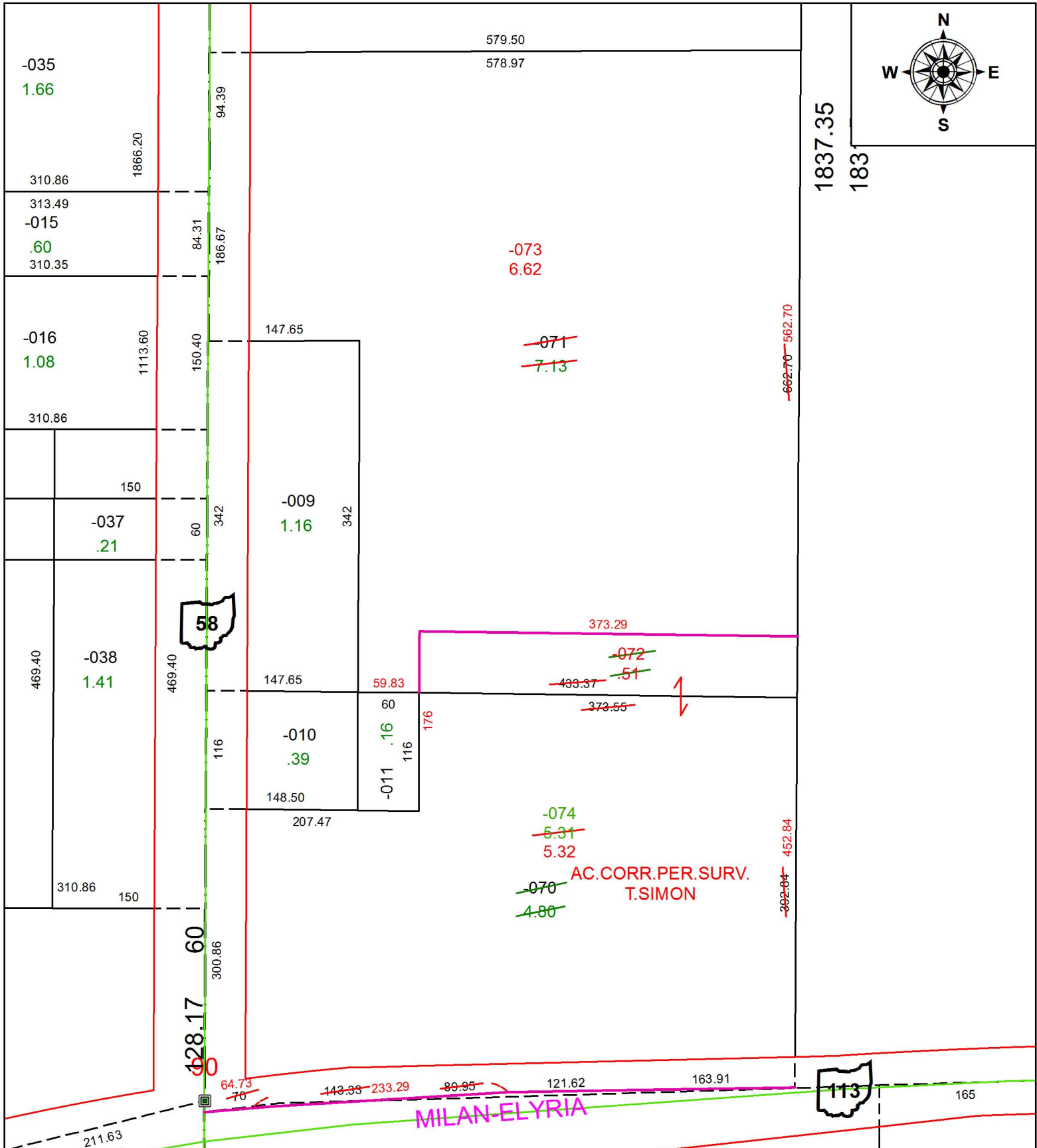


PARENT PARCEL: 05-00-048-000-070, -071

CHILD PARCEL: 05-00-048-000-072 THRU -074

STARTING POINT: INTERSECTION OF C/L OF S.R. 58 AND C/L OF S.R. 113

16-03600



SPLITS/DEEDS PROCESSED
 LORAIN COUNTY TAX MAP DEPARTMENT
 226 MIDDLE AVE. ELYRIA, OH

SURVEYED BY: THOMAS A. SIMON
 CLOSURE: 1: 113,227
 MAP PAGE(S): 5-00-048
 APPROVED BY: RRM DATE: 12-8-16
 SCALE: 1" = 125 PRIOR INSTRUMENT: 20160577069