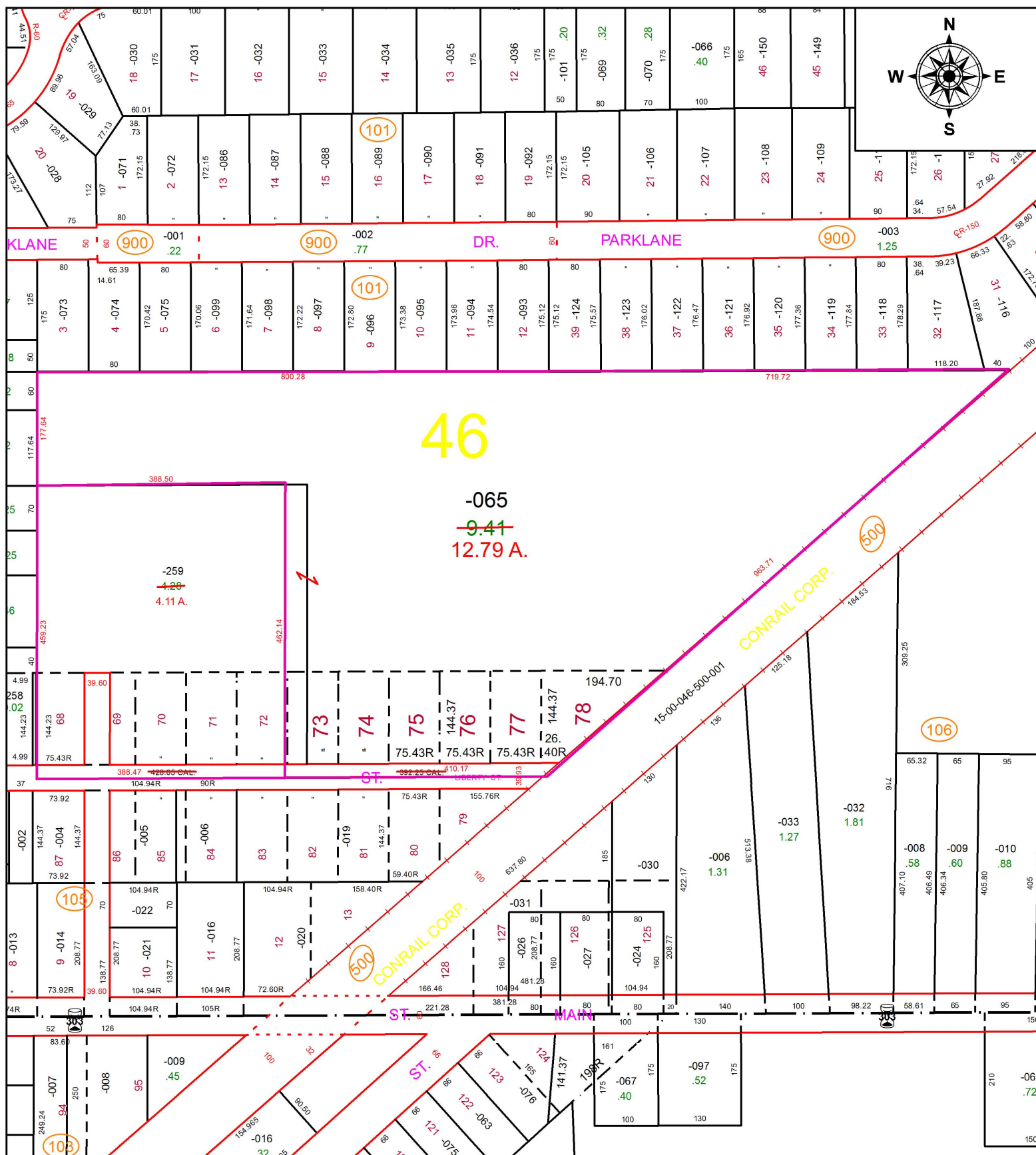


PARENT PARCEL: 15-00-046-101-065, & -265

CHILD PARCEL: ACREAGE & MAP CORRECTION

17-03598-C

STARTING POINT: 1" STEEL PIN FD, CL OF LIBERTY ST. & CL OF CHURCH ST.



46

-065
~~9.41~~
12.79 A.

SPLITS/DEEDS PROCESSED

LORAIN COUNTY TAX MAP DEPARTMENT
226 MIDDLE AVE. ELYRIA, OH

SURVEYED BY: STEVEN D. CODER
 CLOSURE: 1:393839
 MAP PAGE(S): 15-00-046
 APPROVED BY: TJS DATE: 2/7/17
 SCALE: 1" = 200 PRIOR INSTRUMENT: DV. 4 PG. 392