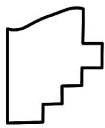
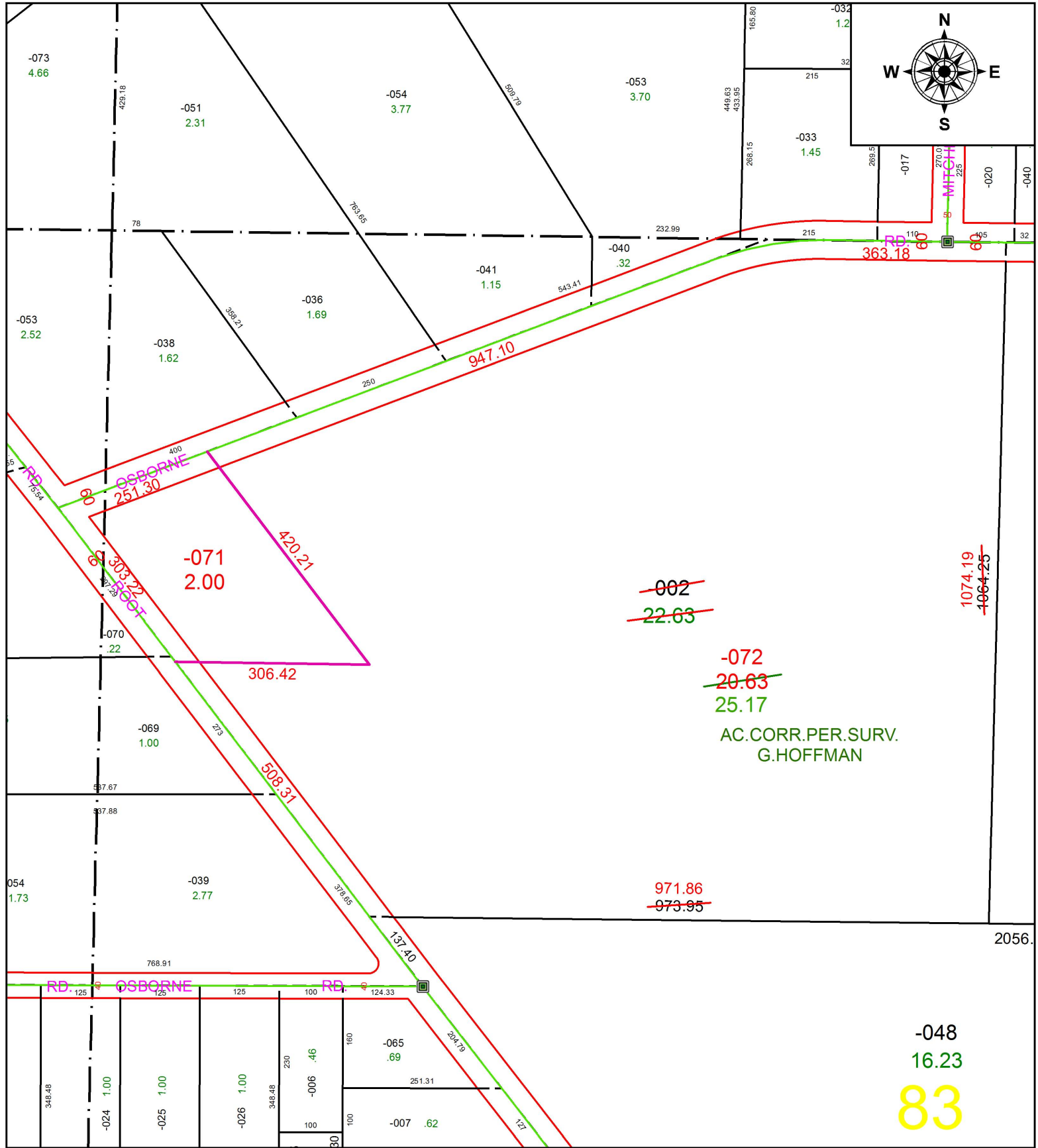


PARENT PARCEL: 12-00-083-000-002

CHILD PARCEL: 12-00-083-000-071, -072

STARTING POINT: INTERSECTION OF C/L OF OSBORNE RD. AND C/L OF ROOT RD.

16-03596



SPLITS/DEEDS PROCESSED
 LORAIN COUNTY TAX MAP DEPARTMENT
 226 MIDDLE AVE. ELYRIA, OH

SURVEYED BY: GEORGE HOFFMAN
 CLOSURE: 1: 51,937
 MAP PAGE(S): 3-00-099-B
 APPROVED BY: RRM DATE: 11-14-16
 SCALE: 1" = 200 PRIOR INSTRUMENT: 20050116533