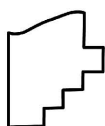
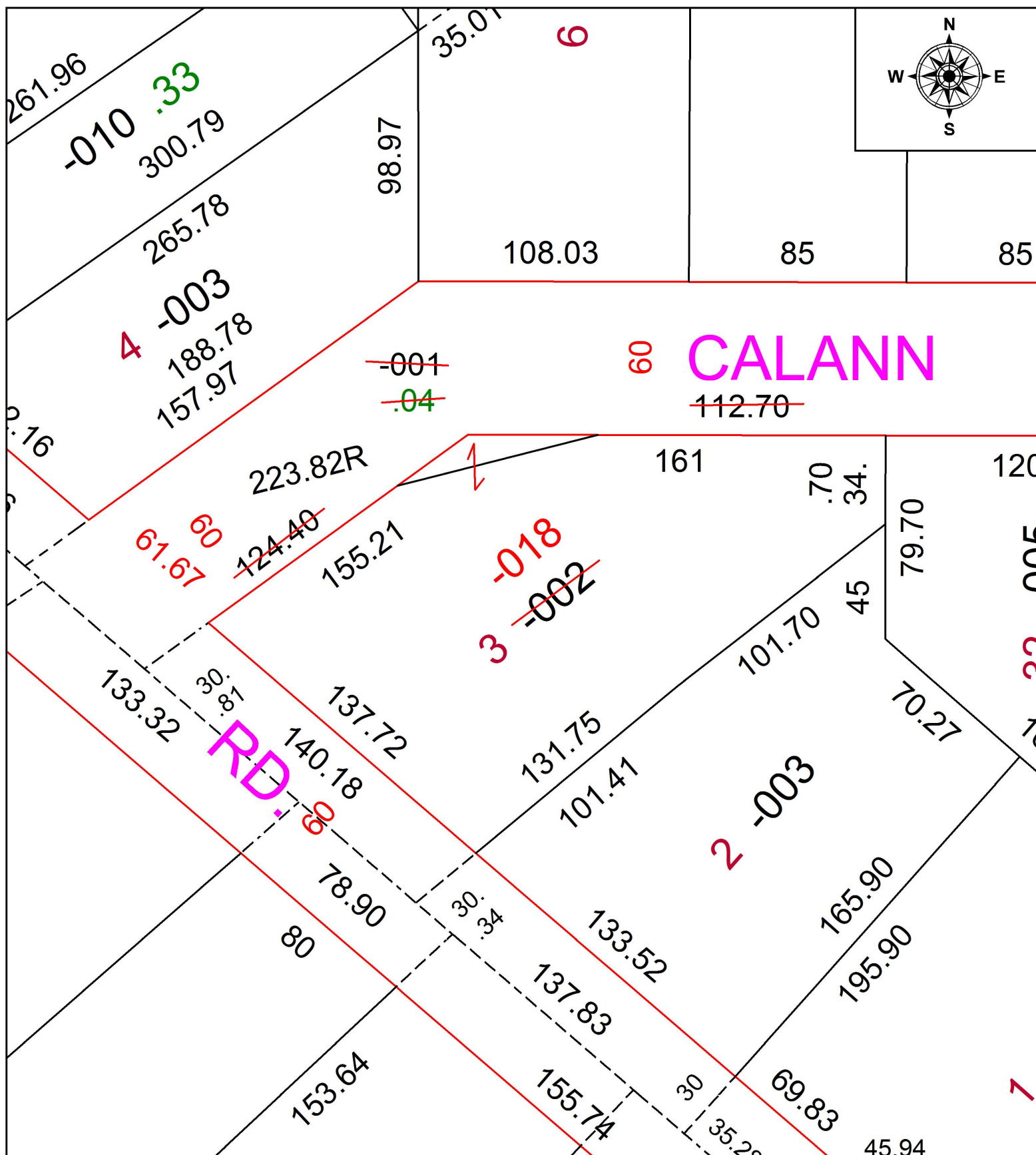


PARENT PARCEL: 10-00-004-137-001 & -002

CHILD PARCEL: 10-00-004-137-018 137.72 X 233.45 COMBINATION

STARTING POINT: S/L 3 IN CARL J. SMITH ADDITION PV. 15 PG. 29

17-03595-C



SPLITS/DEEDS PROCESSED
 LORAIN COUNTY TAX MAP DEPARTMENT
 226 MIDDLE AVE. ELYRIA, OH

SURVEYED BY: T.W. LAUNDON
 CLOSURE: 1: 84,000
 MAP PAGE(S): 10-00-004
 APPROVED BY: TJS DATE: 1/26/16
 SCALE: 1" = 200 PRIOR INSTRUMENT: 2015-0536232