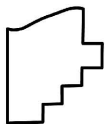
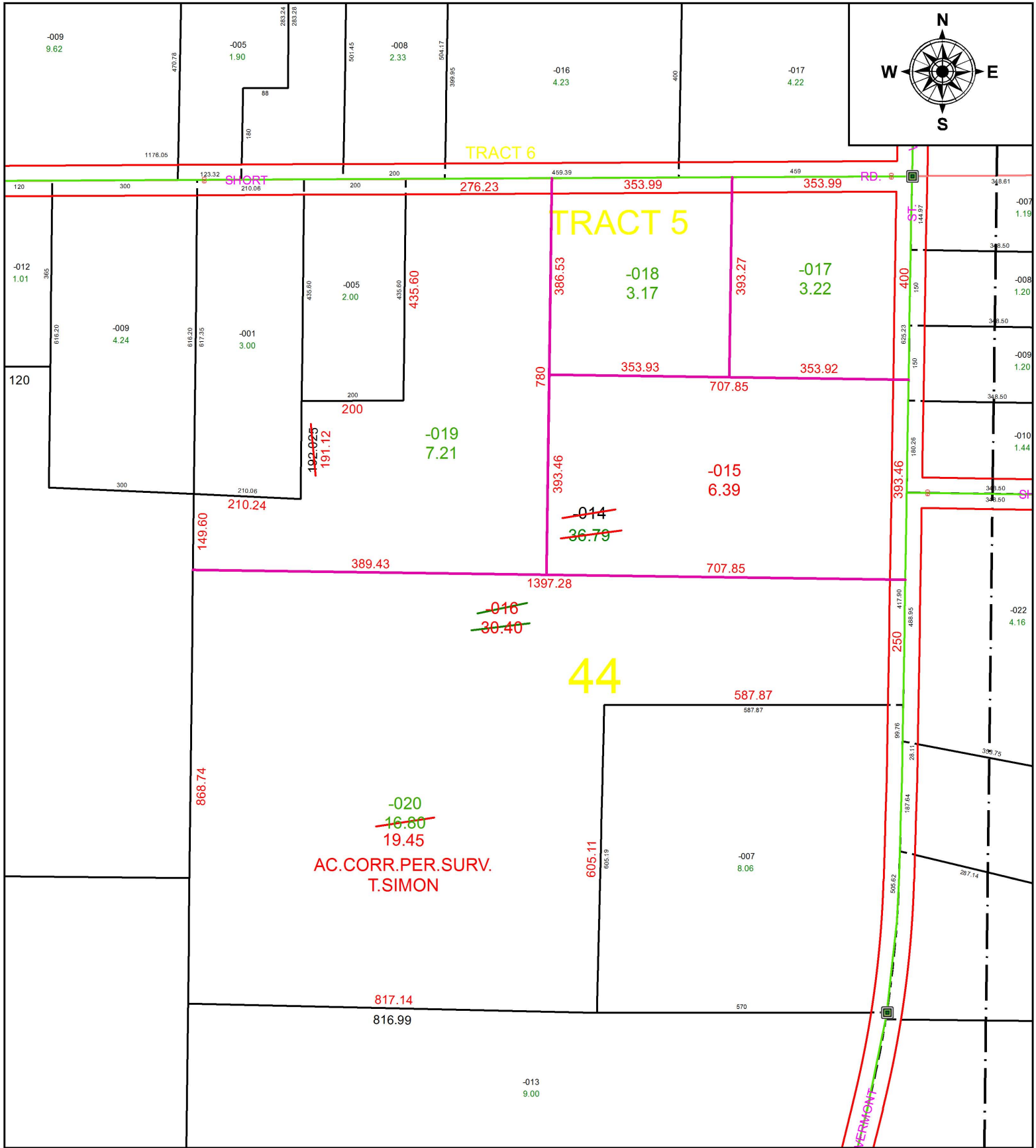


PARENT PARCEL: 19-05-044-000-014

CHILD PARCEL: 19-05-044-000-015 THRU -020

STARTING POINT: INTERSECTION OF C/L OF SHORT RD. AND C/L OF VERMONT ST.

16-03593



**SPLITS/DEEDS PROCESSED**  
 LORAIN COUNTY TAX MAP DEPARTMENT  
 226 MIDDLE AVE. ELYRIA, OH

SURVEYED BY: THOMAS A. SIMON

CLOSURE: 1: 210,638

MAP PAGE(S): 19-05-044

APPROVED BY: RRM DATE: 11-1-16

SCALE: 1" = 250 PRIOR INSTRUMENT: 20160016012