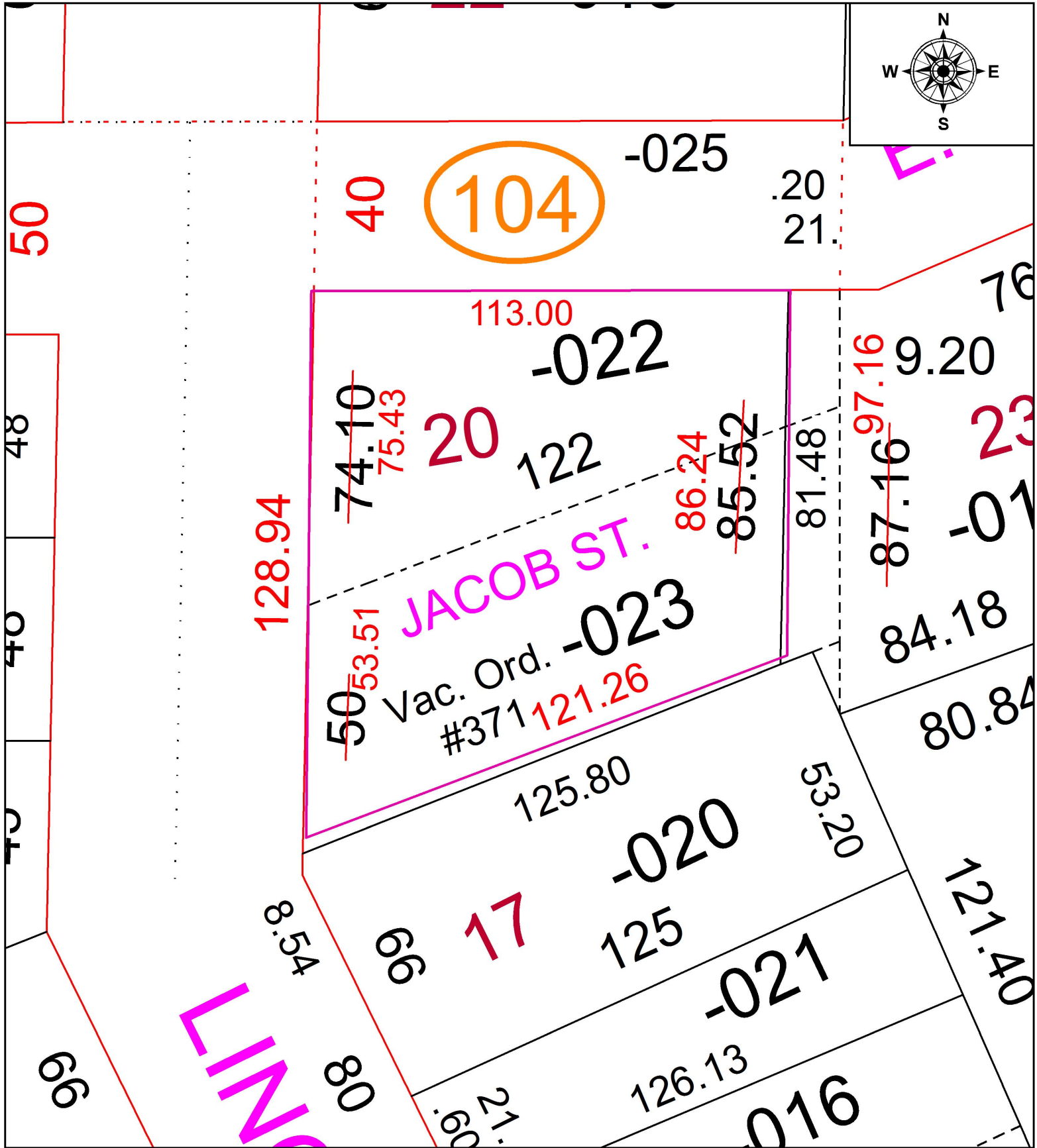
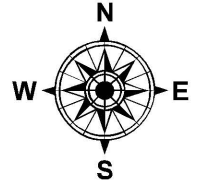


PARENT PARCEL: 05-00-023-111-022 & -023

CHILD PARCEL: FRONTAGE & DEPTH CORRECTION

STARTING POINT: 1" I.P. FD. , EAST LINE OF LINCOLN ST. & SOUTH LINE OF VACATED JACOB ST.

17-03592-C



SPLITS/DEEDS PROCESSED
LORAIN COUNTY TAX MAP DEPARTMENT
226 MIDDLE AVE. ELYRIA, OH

SURVEYED BY: ADAM D. TREAT
CLOSURE: 1:151239
MAP PAGE(S): 05-00-023
APPROVED BY: TJS DATE: 2/1/17
SCALE: 1" = 30' PRIOR INSTRUMENT: 2016-0592137