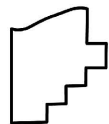
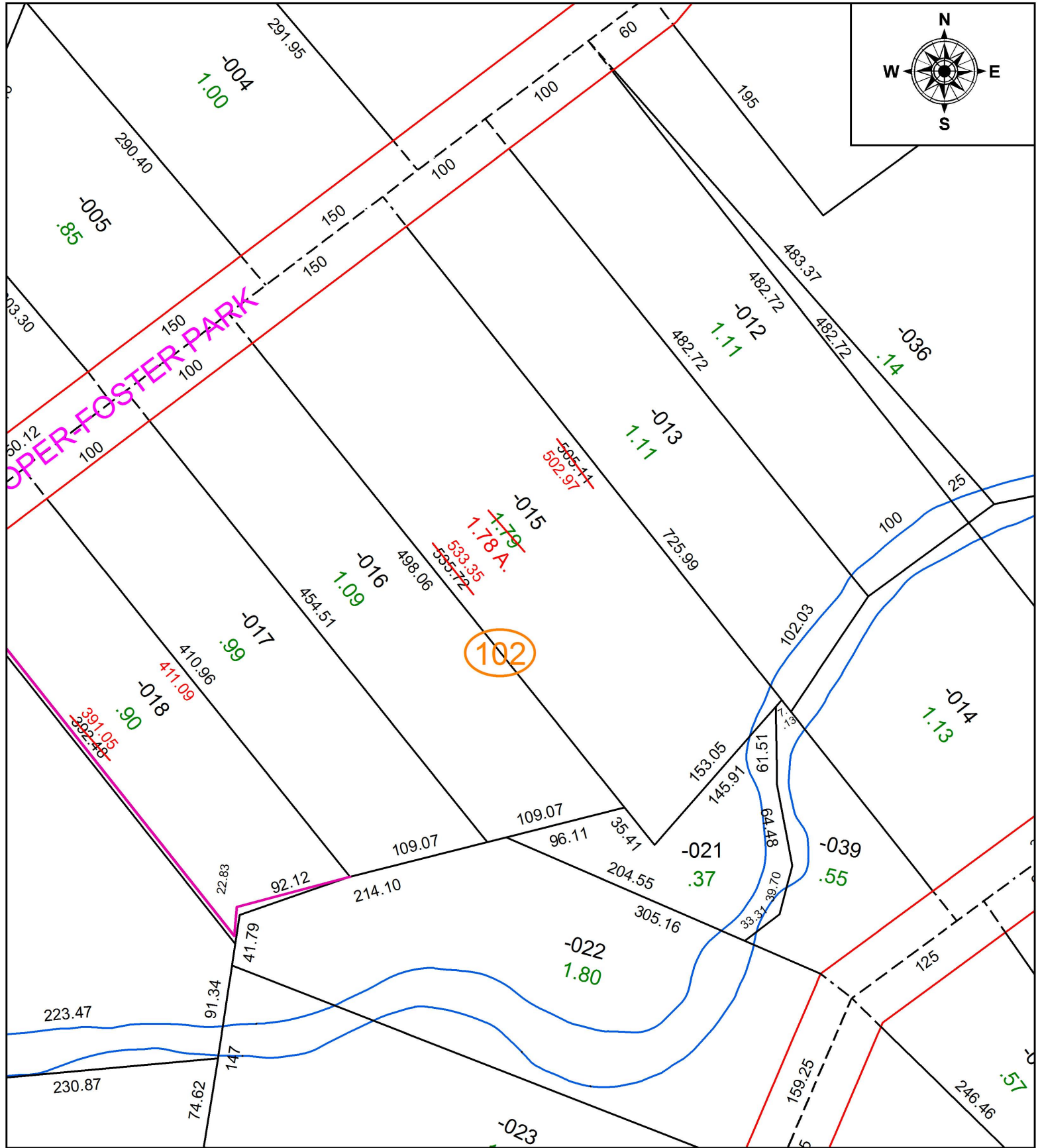
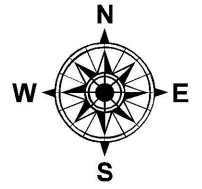


PARENT PARCEL: 05-00-021-102-015

CHILD PARCEL: AC. CORR. PER SURV. T. SPILLMAN

STARTING POINT: N.W. CORNER OF GODELL DV. 515 PG. 527 REF. FROM S.E. CORNER OF BRECKENRIDGE SUB. PV. 24 PG. 99

17-03591-C



**SPLITS/DEEDS PROCESSED**  
LORAIN COUNTY TAX MAP DEPARTMENT  
226 MIDDLE AVE. ELYRIA, OH

SURVEYED BY: THEODORE J. SPILLMAN

CLOSURE: 1: 80,000

MAP PAGE(S): 5-00-021

APPROVED BY: TJS DATE: 1/12/17

SCALE: 1" = 100 PRIOR INSTRUMENT: 2015-0546685