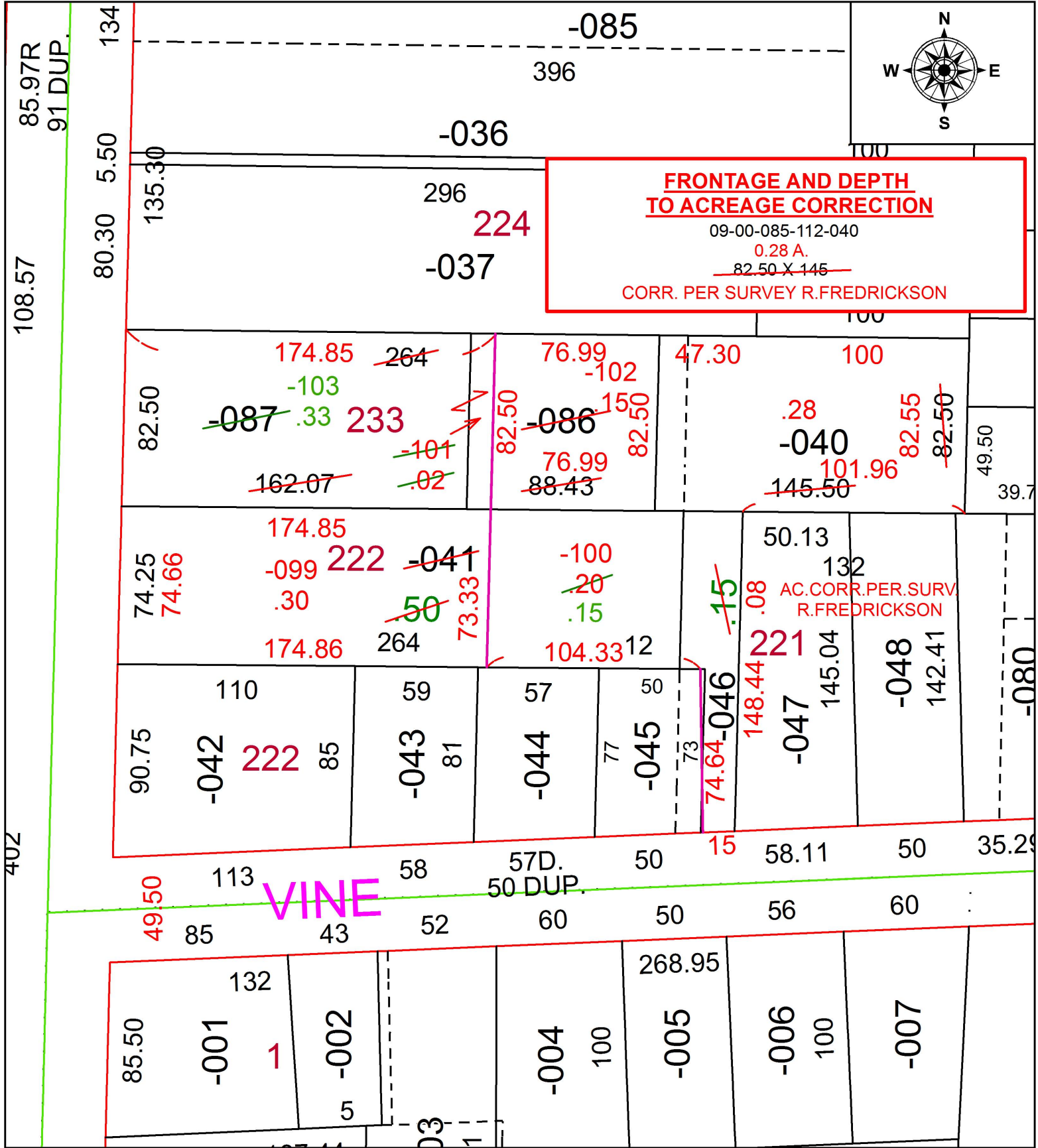


PARENT PARCEL: 09-00-085-112-040, -041, -046, -086, -087

CHILD PARCEL: 09-00-085-112-040, -046, -099 THRU -103

STARTING POINT: INTERSECTION OF C/L OF VINE ST. AND C/L OF PROFESSOR ST.

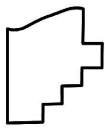
16-03589



**FRONTAGE AND DEPTH TO ACREAGE CORRECTION**  
 09-00-085-112-040  
 0.28 A.  
~~82.50 X 145~~  
 CORR. PER SURVEY R.FREDRICKSON

AC.CORR.PER.SURV.  
 R.FREDRICKSON

VINE



**SPLITS/DEEDS PROCESSED**  
 LORAIN COUNTY TAX MAP DEPARTMENT  
 226 MIDDLE AVE. ELYRIA, OH

SURVEYED BY: RICHARD A. FREDRICKSON  
 CLOSURE: 1: 60,412  
 MAP PAGE(S): 9-00-085  
 APPROVED BY: RRM DATE: 10-26-16  
 SCALE: 1" = 60 PRIOR INSTRUMENT: DV 1070/265