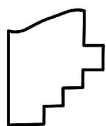
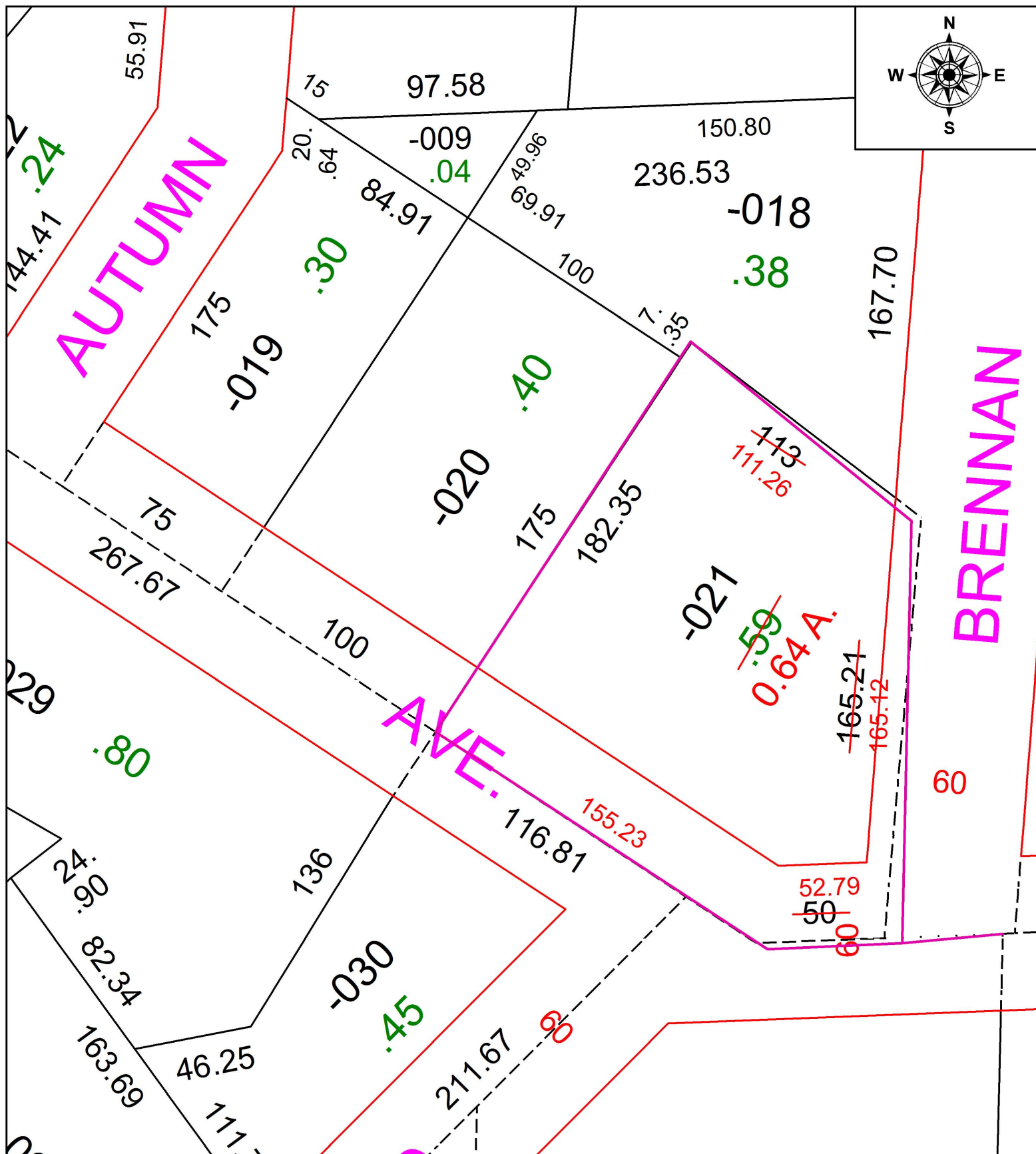


PARENT PARCEL: 05-00-036-103-021

CHILD PARCEL: ACREAGE CORRECTION

STARTING POINT: CL OF ELYRIA AVE. & THE EAST EXTENTION LINE OF AUTUMN DR.

17-03586- C



SPLITS/DEEDS PROCESSED
 LORAIN COUNTY TAX MAP DEPARTMENT
 226 MIDDLE AVE. ELYRIA, OH

SURVEYED BY: PATRICK A. McGANNON

CLOSURE: 1: 58,000

MAP PAGE(S): 05-00-036

APPROVED BY: TJS **DATE:** 1/17/17

SCALE: 1" = 200 **PRIOR INSTRUMENT:** 2015-0558064