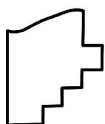
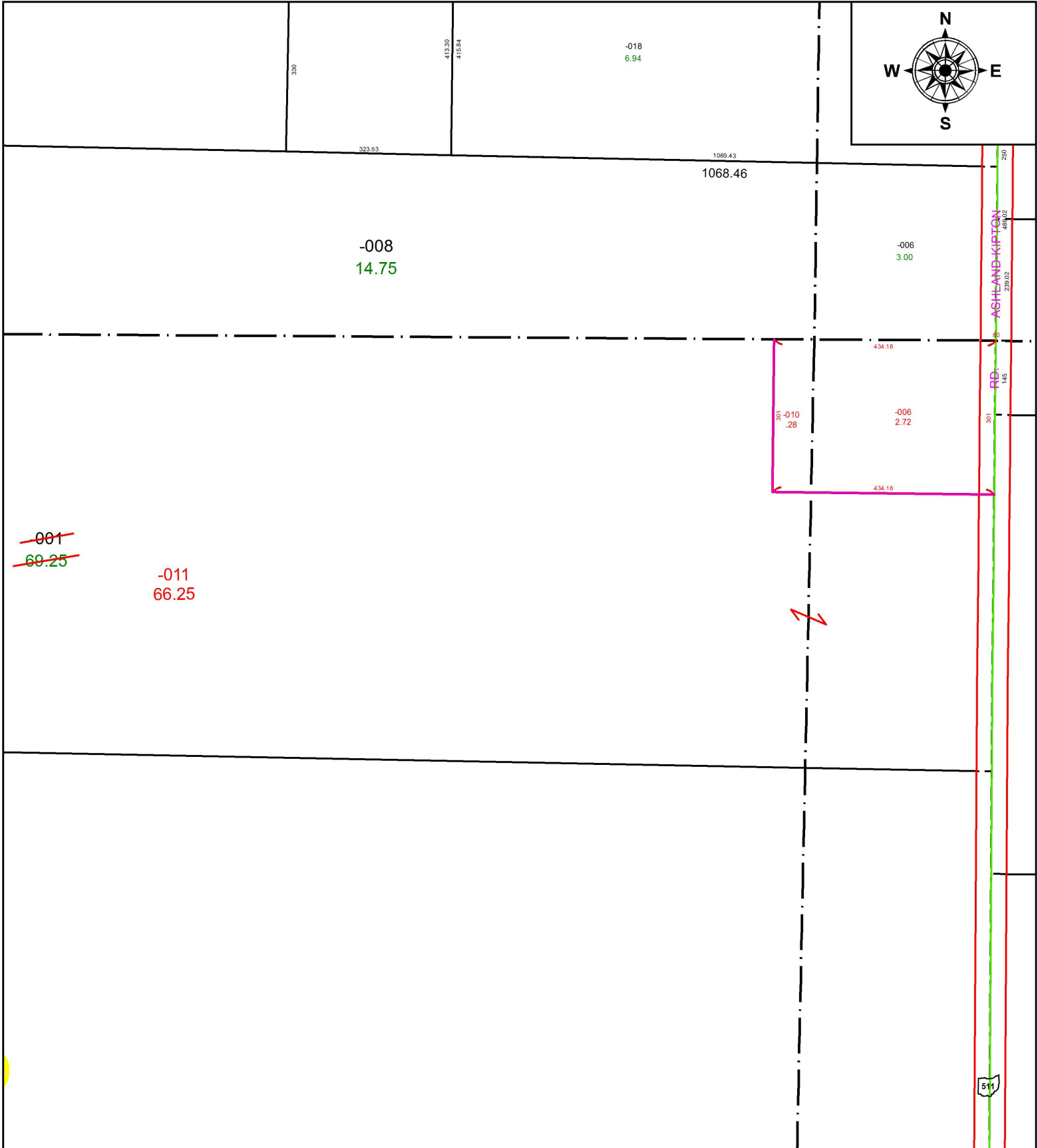


PARENT PARCEL: 20-03-009-000-001

CHILD PARCEL: 20-03-008-000-006, 20-03-009-000-010, -011

STARTING POINT: SOUTHWEST CORNER OF TR.3 O.L.8

16-03582



SPLITS/DEEDS PROCESSED
 LORAIN COUNTY TAX MAP DEPARTMENT
 226 MIDDLE AVE. ELYRIA, OH

SURVEYED BY: ROGER L. STEVENS

CLOSURE: 1: 2147483648

MAP PAGE(S): 20-G

APPROVED BY: RRM **DATE:** 10-13-16

SCALE: 1" = 250 **PRIOR INSTRUMENT:** 20000722809