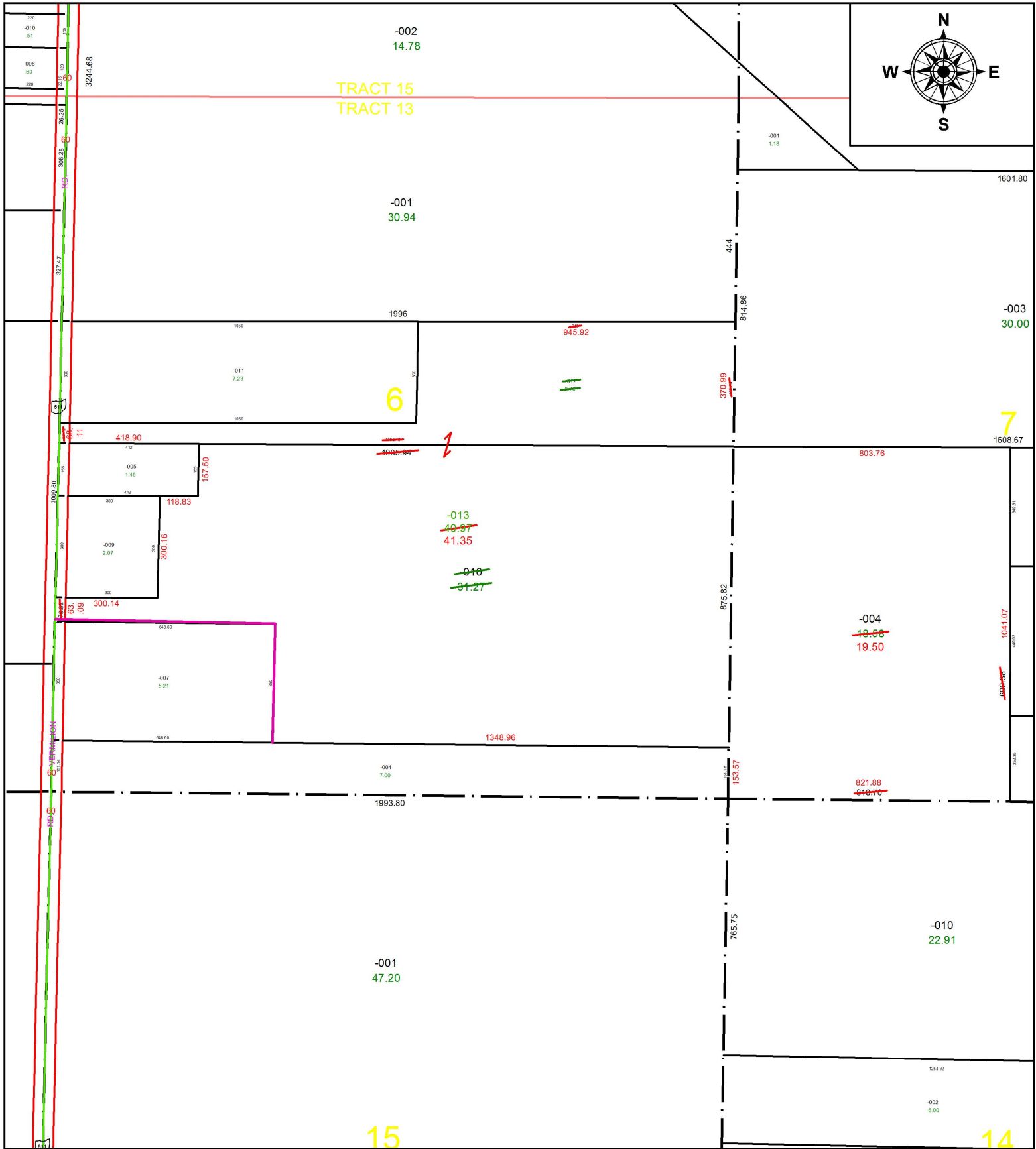


PARENT PARCEL: 08-13-006-000-010, -012, 08-13-007-000-004

CHILD PARCEL: 08-13-006-000-013, 08-13-007-000-004

STARTING POINT: SOUTHWEST CORNER OF TR.13 O.L.6

16-03581



SPLITS/DEEDS PROCESSED
 LORAIN COUNTY TAX MAP DEPARTMENT
 226 MIDDLE AVE. ELYRIA, OH

SURVEYED BY: THOMAS A. SIMON

CLOSURE: 1: 673,561

MAP PAGE(S): 8-G

APPROVED BY: RRM DATE: 10-13-16

SCALE: 1" = 375 PRIOR INSTRUMENT: 20160582132