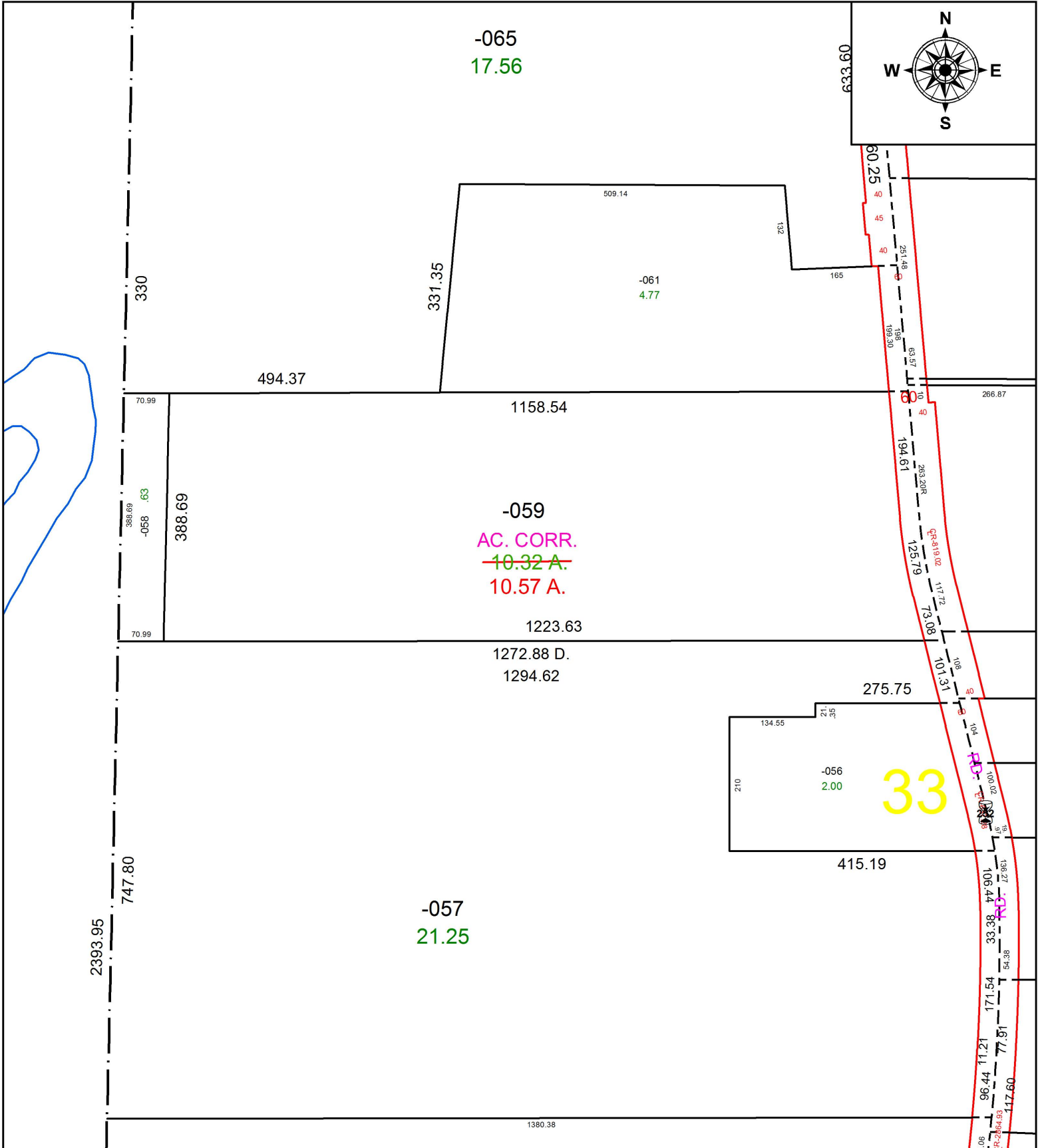


PARENT PARCEL: 12-00-033-000-059

CHILD PARCEL: XX-XX-XXX-XXX-XXX

STARTING POINT: CL OF EAST RIVER RD. & SOUTHERLY LINE OF KANE DV. 897 PG. 41

16-03577-A



SPLITS/DEEDS PROCESSED
 LORAIN COUNTY TAX MAP DEPARTMENT
 226 MIDDLE AVE. ELYRIA, OH

SURVEYED BY: CHRISTOPHER J. DEMPSEY

CLOSURE: 1: 33,000

MAP PAGE(S): 12-00-033

APPROVED BY: TJS DATE: 1/6/17

SCALE: 1" = 200 PRIOR INSTRUMENT: 1997-0453404