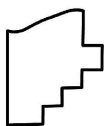
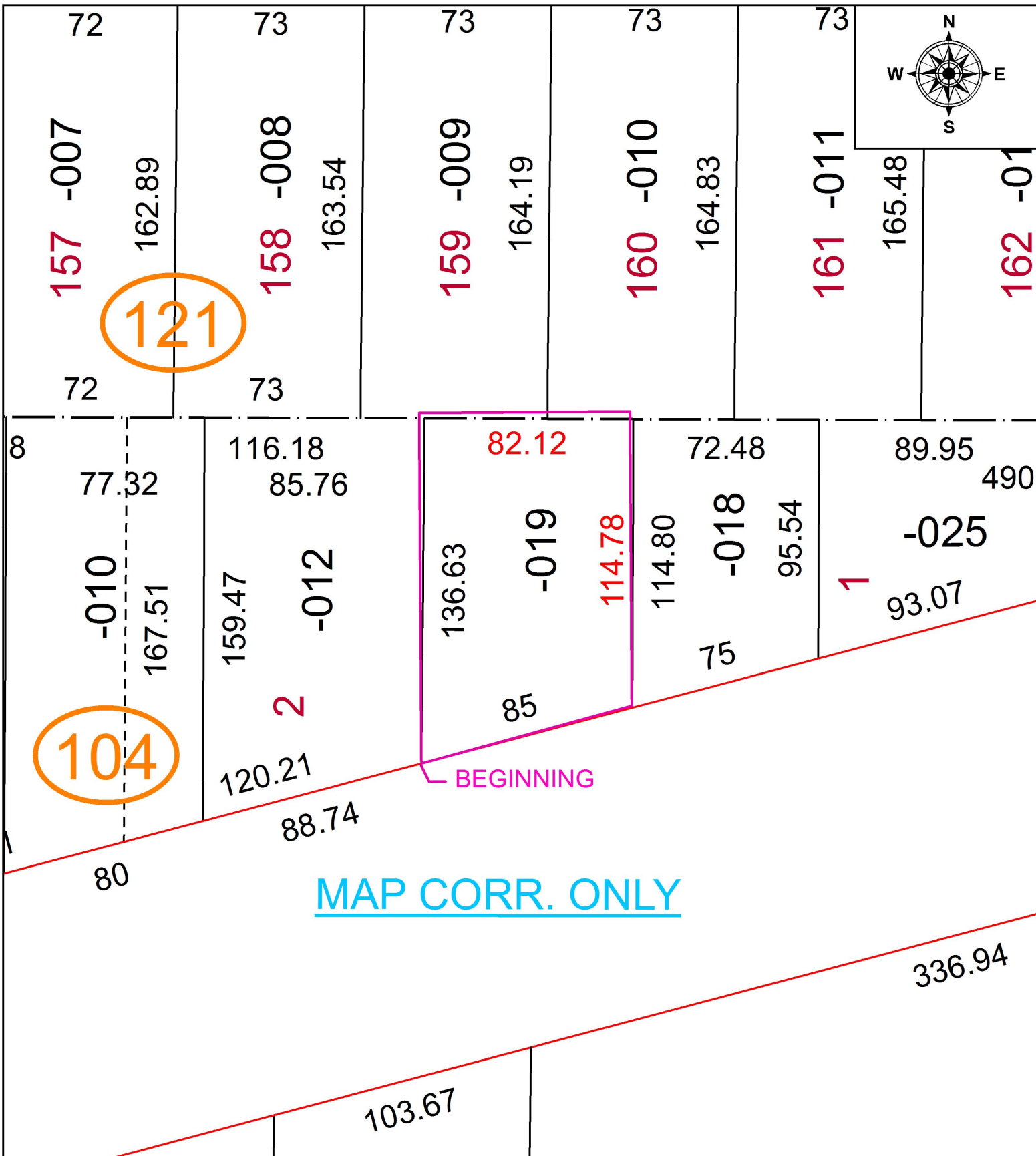


PARENT PARCEL: 02-02-006-104-019

CHILD PARCEL: XX-XX-XXX-XXX-XXX

STARTING POINT: S.W. CORNER OF S/L 1 IN CARR ESTATES SUB. PV.23 PG. 2

16-03576-C



SPLITS/DEEDS PROCESSED
LORAIN COUNTY TAX MAP DEPARTMENT
226 MIDDLE AVE. ELYRIA, OH

SURVEYED BY: ROBERT A. DORNER

CLOSURE: 1: 90,000

MAP PAGE(S): 02-02-006

APPROVED BY: TJS DATE: 12/28/16

SCALE: 1" = 50' PRIOR INSTRUMENT: 2015-0564915